

Mantodea (Insecta) of Nepal: an annotated checklist

REINHARD EHRMANN, Karlsruhe & MATTHIAS BORER, Basel

Zusammenfassung

Basierend auf umfangreichen Literatur-Recherchen, sowie der Bearbeitung von 13 Museumssammlungen können für Nepal 49 Mantodea-Arten nachgewiesen werden. Die Gattung *Rhombomantis* **gen. nov.** wird neu beschrieben. Folgende Gattung und sechs Arten werden synonymisiert respektive neu kombiniert: *Parahestitasula* Lombardo, 1995 **syn. nov.** von *Ephestiasula* Giglio-Tos, 1915; *Rhombomantis butleri* (Wood-Mason, 1878) **comb. nov.** von *Rhombodera butleri* Wood-Mason, 1878; *Rhombomantis fusca* (Lombardo, 1992) **comb. nov.** von *Rhombodera fusca* Lombardo, 1992; *Rhombomantis woodmasoni* (Werner, 1931) **comb. nov.** von *Rhombodera woodmasoni* Werner, 1931; *Ephestiasula obscura* (Lombardo, 1995) **comb. nov.** von *Parahestitasula obscura* Lombardo, 1995; *Mantis religiosa akbari* Soomro et al., 2001 **syn. nov.** von *Mantis religiosa inornata* Werner, 1930; *Hierodula brachynota* Wang & Dong, 1993 **syn. nov.** von *Rhombomantis fusca* (Lombardo, 1992). Für acht Arten gibt es keinen gesicherten Nachweis. Eine aktuelle und kommentierte Checkliste der in Nepal nachgewiesenen Arten wird erstellt. Die 49 der in Nepal vorkommenden Arten werden in alphabetischer Reihenfolge abgebildet.

Summary

Based on substantial literature research and examination of 13 museum collections, 49 species of Mantodea can be listed for Nepal. The genus *Rhombomantis*, **gen. nov.** is described for the first time. The following genus and six species are synonymized or newly combined: *Parahestitasula* Lombardo, 1995 **syn. nov.** of *Ephestiasula* Giglio-Tos, 1915; *Rhombomantis butleri* (Wood-Mason, 1878) **comb. nov.** from *Rhombodera butleri* Wood-Mason, 1878; *Rhombomantis fusca* (Lombardo, 1992) **comb. nov.** from *Rhombodera fusca* Lombardo, 1992; *Rhombomantis woodmasoni* (Werner, 1931) **comb. nov.** from *Rhombodera woodmasoni* Werner, 1931; *Ephestiasula obscura* (Lombardo, 1995) **comb. nov.** from *Parahestitasula obscura* Lombardo, 1995; *Mantis religiosa akbari* Soomro et al., 2001 **syn. nov.** of *Mantis religiosa inornata* Werner, 1930; *Hierodula brachynota* Wang & Dong, 1993 **syn. nov.** of *Rhombomantis fusca* (Lombardo, 1992). The presence of eight species mentioned in the literature for Nepal is not confirmed. An updated and annotated checklist of Mantodea from Nepal is provided. Out of 49 species present in Nepal, 48 are illustrated in alphabetical order.

Key words: Mantodea, Nepal, taxonomy, checklist, new genus, new synonym, new combination

Introduction

In the last century, few articles focusing on the Mantodea fauna of Nepal have been published. One work investigated the behaviour of *Mantis religiosa* ANONYMOUS (1907) and three faunistic studies were conducted by CHOPARD & DREUX (1966), INGRISCH (1987) and KOBLIK et al. (2000) in which three, five and seven species of Mantodea, respectively, are listed for Nepal.

LOMBARDO (1993) published a study about the Mantodea fauna of Nepal and listed 20 species. 17 were already known, and three were new to Nepal. The following three further species were described as new to science: *Acromantis elegans*, *Memantis anomala* und *Sceptuchus baehri*.

Since Nepal borders in the west, south and east the following five Indian states, Uttarakhand (DAS 2012), Uttar Pradesh, Bihar, West Bengal and Sikkim, it was essential to take into account publications dealing with the Mantodea fauna of India, in which species from Nepal are sometimes cited (EHRMANN 2002, 2005, GHATE 2002, 2012, MUKHERJEE 1995, 2014, SURESHAN 2004, 2006, 2010).

During the past 20 years, general collecting activity in Nepal, even if not targeted on praying mantids, has increased and has led to a growing number of Mantodea deposited in museum and private collections. The increasing number of specimens, whether mentioned in the literature or deposited in collections, encouraged the authors to build an updated checklist of these charismatic insects.

Material and Method

In order to have access to the relevant characters for determination, 73 out of the 166 museum specimens investigated were softened and re-prepared.

Photographs of specimens were taken by Reinhard Ehrmann,

with a Canon PowerShot A630 digital camera and processed using Adobe Photoshop 8.0.1.

The authors followed the classification of Ehrmann & Roy (in EHRMANN 2002) and ROY (2014). The genera and species are cited in alphabetical order.

Material examined is deposited in the following collections:

ANSP	Academy of Natural Sciences, Philadelphia, Pennsylvania, U.S.A.
BMNH	British Museum Natural History, London, United Kingdom
DBUC	Dipartimento di Biologia Animale, Università di Catania, Catania, Sicily, Italy
IEAS	Institute of Entomology, Academia Sinica, Shanghai, China
IFRI	Indian Forest Research Institute, Dehra Dun, Uttar Pradesh, India
LSUK	Linnean Society, United Kingdom, London
MCZMI	Modern College Zoological Museum India, India: Prov. Maharashtra, Pune
MHNG	Museum d'Histoire Naturelle, Geneva, Switzerland
MIZ	Museum of the Institute of Zoology, Polish Academy of Science Warszawa, Poland
MIZT	Museo, Istituto di Zoologia Sistemica, Università di Torino, Italy
MNHN	Museum National d'Histoire Naturelle, Paris, France
MNMS	Museo Nacional de Ciencias Naturales Madrid, Spain
MSNG	Museo di Storia Naturale Genova "Giacomo Doria", Genova, Italy
MZBS	Museo Zoologica Barcelona, Barcelona, Spain

NMB	Naturhistorisches Museum Basel, Switzerland
NME	Naturkundemuseum Erfurt, Germany
NHMW	Naturhistorisches Museum, Wien, Austria
NHRS	Naturhistoriska Riksmuseet, Stockholm, Sweden
NZSI	National Zoological Collection, Zoological Survey of India, Kolkata (Calcutta), India
OUMNH	Oxford University Museum of Natural History, London, United Kingdom
RMNH	Nationaal Natuurhistorisch Museum, Leiden, Netherlands
SDEI	Senckenberg Deutsches Entomologisches Institut, Müncheberg, Germany
SMNK	Staatliches Museum für Naturkunde, Karlsruhe, Germany
SMNS	Staatliches Museum für Naturkunde, Stuttgart, Germany
USINDH	Department of Zoology, University of Sindh, Jamshoro, Pakistan
UZI	Zoological Museum, Uppsala University, Sweden
ZIN	Zoological Institute, Academy of Sciences, St. Petersburg, Russia
ZMHB	Museum für Naturkunde Berlin, Germany
ZMUC	Zoological Museum and University, Copenhagen, Denmark
ZMUH	Zoologisches Institut und Zoologisches Museum der Universität, Hamburg, Germany
ZSM	Zoologische Staatssammlung, München, Germany

Results

This checklist includes all Mantodea species known to date from Nepal. They belong to 8 families, 15 subfamilies, 13 tribes, 28 genera and 49 species. The following four species are endemic to Nepal: *Acromantis elegans* Lombardo, 1993; *Acromantis grandis* Beier, 1930; *Parahestiasula obscura* Lombardo, 1995 and *Sceptuchus baehri* Lombardo, 1993.

The authors found no evidence for the occurrence of the following eight species, cited in literature as supposedly occurring in Nepal: *Acromantis insularis* Giglio-Tos, 1915; *Amantis fuliginosa* (Werner, 1931); *Bolivaria xanthoptera* (Olivier, 1792), *Dysaules himalayanus* (Wood-Mason, 1889), *Euthyphleps rectivenis* (Wood-Mason, 1889), *Mesopteryx alata* Saussure, 1870, *Nemotha mirabilis* Beier, 1933 and *Ormomantis indica* (Giglio-Tos, 1915). The Mantodea examined were collected between 115 m a.s.l. (*Hierodula unimaculata*) and 2000 m a.s.l. (*Tenodera aridifolia*).

Annotated checklist

Acromantis Saussure, 1870

Acromantis Saussure, 1870: 229.

Type generis: *Mantis oligoneura* De Haan, 1842: 90-91, pl. 18, fig. 6 (male and female) (Indonesien).

Acromantis elegans Lombardo, 1993

Acromantis elegans Lombardo, 1993: 202-203, fig. 10a-10c.
= *Acromantis elegans*. In: EHRMANN 2002: 52 (male and female) (Nepal).
= *Acromantis elegans*. In: OTTE & SPEARMAN 2005: 67 (male and female) (Nepal).

Size: Medium-sized (body length in mm: male unknown, female unknown).

Type material: Holotype male, Nepal: Prov. Chisipani Garhi Bhainse Dobhan 730 m, leg. W.Dierl & W.Schacht, 16.-20.VII.1967, not found in ZSM, in DBUC?, Paratype female, Nepal: Rapti Tal, Monahari Khola, Belwa 350 m, leg. W.Dierl, W.Forster & W.Schacht, 10.V.1967, not found in ZSM, in DBUC?.

Distribution: Nepal.

Acromantis grandis Beier, 1930 Fig. 1

Acromantis grandis Beier, 1930: 454-455 (female).
= *Acromantis grandis*. In: BEIER 1934: 13 (Tonkin = Vietnam).
= *Acromantis grandis*. In: MARSHALL 1975: 316 (type catalog, Holotype female, [Vietnam (north)] Tonkin, Than-Moi, VI.-VII. (H. Fruhstorfer).
= *Acromantis grandis*. In: LOMBARDO 1993: 203.
= *Acromantis grandis*. In: EHRMANN 2002: 53 (female) (Nepal, Vietnam).
= *Acromantis grandis*. In: OTTE & SPEARMAN 2005: 67 (female) (Tonkin = Vietnam).

Size: Medium-sized (body length in mm: male 28, female 41).

Type material: Holotype female, [Vietnam-N] Tonkin, Than-Moi, VI.-VII. (Fruhstorfer), BMNH.

Records: **ZSM:** Nepal: Jubing 1600 m, leg. W.Dierl, 03.-13.V.1964, det. Max Beier (male).

Distribution: Nepal.

Amantis Giglio-Tos, 1915

Amantis Giglio-Tos, 1915c: 151.
= *Cimantis* Giglio-Tos, 1915c: 154.
= *Amantis*. In: GIGLIO-TOS 1919: 59.
= *Cimantis*. In: GIGLIO-TOS 1919: 59.
= *Cimantis*. In: BEIER 1935: 28 (as a new synonym).
= *Shirakia* Beier, 1935: 47 (type *Gonypeta maculata* Shiraki, 1911: 318, fig. pl. 12, fig. 6, 6a) (Japan, Formosa).
= *Shirakia*. In: EHRMANN 2002: 56 (as a synonym).
= *Shirakia*. In: OTTE & SPEARMAN 2005: 143 (maculata as synonymous) (Japan).

Type generis: *Mantis (Oxyphilus) reticulata* De Haan, 1842: 87 (#9), pl. 17, fig. 9 (male) (Java).

Amantis bolivarii Giglio-Tos, 1915 Fig. 2, 3

Amantis bolivarii Giglio-Tos, 1915c: 153.
= *Iridopteryx reticulata* Brunner de Wattenwyl, 1893: 65 (female) (Myanmar) (depository unknown).
= *Amantis bolivarii*. In: GIGLIO-TOS 1927: 171 (male and female) (Himalaya, Myanmar).
= *Amantis bolivarii*. In: BEIER 1935: 28 (Himalaya, Myanmar).
= *Amantis bolivarii*. In: MUKHERJEE, HAZRA & GHOSH 1995: 265 (male and female), figs. 80-82 (female), (India, Myanmar).
= *Amantis bolivarii*. In: EHRMANN 2002: 56 (male and female) (India, Myanmar, Nepal).
= *Amantis bolivarii*. In: OTTE & SPEARMAN 2005: 141 (male and female) (Myanmar, Nepal).
= *Amantis bolivarii*. In: GHATE, JADHAV, SURESHAN & SHARMA 2012: 17 (male and female) (India, Myanmar, Nepal).
= *Amantis bolivarii*. In: MUKHERJEE, EHRMANN & CHATTERJEE 2014: 24 (male and female) (Myanmar, Nepal).

Size: Small (body length in mm: male 17, female 19).

Type material: Holotype male, Kurseong in Himalaya, NHMW, Paratype female, Myanmar-SW: Tenasserim, MSNG.

Distribution: India, Myanmar, Nepal.

Records: **SMNK:** Nepal: Bhaktapur, 27.40N-85.25E, im Kathmandu Tal, 13 km SE Kathmandu, leg. U.Sellenschlo, XI.1986 (male #05720); Nepal: Prov. Koshi, 26.49.41N-87.09.19E, Tashigaon bis Sedua, 1600-2100 m, leg. J.Weipert, 12.X.2002 (female #11908) (ex coll. NME).

Remarks: Locus typicus: Kurseong [Kurseong, city centre (26°52'55.96"N - 88°16'43.86"E)] is a city at 1500 m.a.s.l. in the district of Darjeeling in the Indian state of West Bengal, at the southeastern foothills of the Himalayas. Kurseong is situated about 32 km in the south of the city centre of Darjeeling and only 12 km in the east of the boarder to Nepal.

Ambivia Stål, 1877

Ambivia Stål, 1877: 88.

Type generis: *Mantis undata* Fabricius, 1793: 19 (#28) (sex ?) (India).

Ambivia undata (Fabricius, 1793) Fig. 4

Mantis undata Fabricius, 1793: 19 (#28) (sex ?) (India).
 = *Popa undata* (Fabricius, 1793). In: REHN 1903: 718.
 = *Popa undata*. In: WERNER 1908: 123-124.
 = *Popa undata*. In: REHN 1911: 25-26.
 = *Ambivia undata* (Fabricius, 1793). In: EHRMANN 2002: 58, fig. 386 (male).
 = *Ambivia popa* Stål, 1877: 88.
 = *Ambivia popa*. In: WESTWOOD 1889: 22, 26, pl. 11, fig. 6f.
 = *Ambivia popa*. In: GIGLIO-TOS 1914a: 86.
 = *Ambivia popa*. In: GIGLIO-TOS 1915a: 8.
 = *Ambivia popa*. In: WERNER 1922a: 125.
 = *Ambivia popa*. In: GIGLIO-TOS 1927: 529-530.
 = *Ambivia popa*. In: UVAROV 1927: 90.
 = *Ambivia popa*. In: REHN 1927: 51-52.
 = *Ambivia popa*. In: STÖSTEDT 1930: 13.
 = *Ambivia popa*. In: WERNER 1933: 901.
 = *Ambivia popa*. In: BEIER 1956: 40.
 = *Ambivia popa*. In: MUKHERJEE & HAZRA 1983: 464.
 = *Ambivia popa*. In: LOMBARDO 1993: 204.
 = *Ambivia popa*. In: MUKHERJEE & HAZRA 1993: 497, 500, 506, fig. 2a-2c.
 = *Ambivia popa*. In: LOMBARDO 1995: 258-260 (n. comb.).
 = *Ambivia popa*. In: MUKHERJEE, HAZRA & GHOSH 1995: 212-213, fig. 17-19.
 = *Ambivia popa*. In: OTTE & SPEARMAN 2005: 300.
 = *Ambivia parapopa* Wang, 1993: 36-37, fig. 15, 17, 38 (synonymized in MUKHERJEE et al. 2014: 4, 13).
 = *Ambivia parapopa*. In: EHRMANN 2002: 58.
 = *Ambivia parapopa*. In: OTTE & SPEARMAN 2005: 300.

Size: Medium-sized (body length in mm: male 40, female 44).

Type material: Type sex ?, India-E: Kolkata, NHRS;

Synonym: *A. parapopa*: Holotype female, China-SW: Prov. Yunnan, Menglun 650 m, IEAS.

Distribution: Borneo, India, Laos, Malaysia, Myanmar, Nepal, Sri Lanka, Sumatra, Thailand, Vietnam.

Records: NME: Nepal: P: Gandaki, D: Lamjung, Basisahar, 28°14'13"N-84°22'20"E, 825 m NN, (#33), leg. M.Hartmann, 29.V.2013 (male); SMNK: Nepal: Bathāla, 28.02N-84.04E, 1550 m, leg. G.Lebisch & H.Probst, 07.-29.VI.1988, (male #00332); Nepal: Yangbel, 27.32N-85.42E, 1350 m, leg. G.Lebisch & H.Probst, 07.-29.VI.1988, (female #00333); ZSM: Nepal: Rapti Tal, Monahari, Belwa 350 m, leg. W.Dierl, W.Forster & W.Schacht, 07.V.1967 (4 males and 4 females).

Amorphoscelis Stål, 1871

Amorphoscelis Stål, 1871: 401.

Type generis: *Amorphoscelis annulicornis* Stål, 1871: 401 (#50) (male) (India orientalis).

Amorphoscelis annulicornis Stål, 1871 Fig. 5

Amorphoscelis annulicornis Stål, 1871: 401 (#50) (male) (India orientalis).
 = *Amorphoscelis annulicornis*. In: ROY 1966: 269, fig. 1.

= *Amorphoscelis annulicornis*. In: ROY 2010: 66-69, 91.
 = *Amorphoscelis indica* Giglio-Tos, 1915b: 33-34 (male) (India).
 = *Amorphoscelis keiseri* Beier, 1956: 33-34 (male) (Sri Lanka).

Size: Small (body length in mm: male 18, female 18).

Type material: Holotype male, India, BMNH, Paratype male, India orientalis, NHRS;

Synonym: *A. indica*: Holotype male, India: Ratnagiri, BMNH (synonymized by ROY 1966: 269);

Synonym: *A. keiseri*: Holotype male, Sri Lanka: Anuradhapura, NMB (synonymized by ROY 1966: 269).

Distribution: India-NE, Malaysia, Melaka, Nepal, Sri Lanka.

Records: DBUC ?: Nepal: Rapti Tal, Monahari Khola, Belwa 350 m, leg. W.Dierl, W.Forster & W.Schacht, 06.V.1967 (male); ZSM: Nepal: Rapti Tal, Monahari Khola, Belwa 350 m, leg. W.Dierl, W.Forster & W.Schacht, 06.V.1967 (male).

Bolivaria Stål, 1877

Bolivaria Stål, 1877: 33-34, 35.

Type generis: *Mantis brachyptera* Pallas, 1773: 728 (male) (Middle East: Iaukum).

Bolivaria xanthoptera (Olivier, 1792) Fig. 6

Mantis xanthoptera Olivier, 1792: 637 (#61) (female) (India).
 = *Iris (Fischeria) xanthoptera* (Olivier, 1792). In: SAUSSURE 1871a: 115.
 = *Deiphobe xanthoptera*. In: WESTWOOD 1889: 8.
 = *Sphendale xanthoptera*. In: KIRBY 1904a: 85-86.
 = *Sphendale xanthoptera*. In: KIRBY 1904b: 269.
 = *Bolivaria xanthoptera*. In: GIGLIO-TOS 1927: 482-483.
 = *Bolivaria xanthoptera*. In: LINDT 1953: 273-280, fig. 7, 8a, 8b, (female) (Tajikistan).
 = *Bolivaria xanthoptera*. In: CHOPARD & DREUX 1966: 603 (Yangbothang, 2000 m) (3 young females).
 = *Mantis ochroptera* Lichtenstein, 1802: 29-30 (depository unknown).
 = *Mantis nympha* Stoll, 1813: 19, pl. 6, fig. 22 (female) (depository unknown).
 = *Iris (Fischeria) moseri* Saussure, 1871a: 114-115 (synonymized by GIGLIO-TOS 1917: 153).
 = *Fischeria moseri*. In: SAUSSURE-FEDTSCHENKO 1874: 18-19 (female).
 = *Bolivaria moseri*. In: JACOBSON & BIANCHI 1905: 152.
 = *Bolivaria moseri*. In: KIRBY 1904b: 269.
 = *Bolivaria moseri*. In: ADELUNG 1907: 40-42 (male).

Size: Medium-sized (body length in mm: male 54-56, female 58-62).

Type material: Holotype female, India-SE: Prov. Tamil Nadu: Negapatnam (=Nagapattinam) (=Negapatam), depository unknown;

Synonym: *I. (F.) moseri*: Type female, Turkestan, depository unknown.

Distribution: Afghanistan, India, Iran, Nepal, Tajikistan, Turkistan.

Creobroter Audinet-Serville, 1839

Harpax (Creobroter) Audinet-Serville, 1839: 160-161.

= *Creobotra* Saussure, 1869: 59.
 = *Creobotra* Saussure, 1871a: 143-144.
 = *Creoboter* Stål, 1877: 86.
 = *Creobotra* Saussure, 1898: 200.
 = *Creoboter* Kirby, 1904b: 290.

Type generis: *Mantis gemmata* Stoll, 1813: 71, pl. 24, fig. 93 (male) (America - err.).

***Creobroter apicalis* Saussure, 1869** Fig. 7, 8

Creobroter apicalis Saussure, 1869: 73.

= *Creobroter apicalis*. In: EHRMANN 2002: 112.

Size: Medium-sized (body length in mm: male 25, female 27-33).

Type material: Holotype female, India-NE: Assam, MHNG.

Distribution: Bangladesh, Bhutan, China, India, Java, Nepal.

Records: **DBUC:** Nepal: Rapti Tal, Monahari, Khola, Belwa 350 m, leg. W.Dierl, W.Forster & W.Schacht, 12.V.1967 (5 males and 2 females); **NMB:** Nepal-E: Mechi, Dobhan, 700 m, leg. M.Brancucci, 05.-06.VI.1985 (male); **NME:** Nepal: Prov. Narayani, D: Chitwan, Sauraha Hotel Riverside, 27°34'29"N-84°29'55"E, LF, 160 m, leg. M.Hartmann, 06.-08.VII.2009, (male); Nepal: Mahakali / Darchula, env. Panshera, 29°39'55"N-80°33'02"E, 800 m, leg. A.Weigel, 30.V.2005, (male); **SMNK:** Nepal: Distr. Chitwan, Royal Chitwan N.-P., Bharatpur, 27.40N-84.26E, 1500 m, lux, leg. M.Hauser, 31.V.-04.VI.1997 (male #01756); Nepal: Distr. Chitwan, Royal Chitwan N.-P., Meghauli, 27.35N-84.14E, 1700 m, lux, leg. M.Hauser, 31.V.-04.VI.1997 (male #01755); **ZSM:** Nepal: Rapti Tal, Monahari, Khola, Belwa 350 m, leg. W.Dierl, W.Forster & W.Schacht, 12.V.1967 (12 males and 7 females).

***Creobroter gemmatus* (Stoll, 1813)** Fig. 9, 10

Mantis gemmata Stoll, 1813: 71, pl. 24, fig. 93 (male) (America - err.).

= *Creobotra gemmata*. In: SAUSSURE 1869: 72-73.

= *Creobotra urbana* (Fabricius, 1775). In: SAUSSURE 1871a: 144-145.

= *Creobotra urbana*. In: BRUNNER DE WATTENWYL 1893: 73.

= *Creobroter urbanus*. In: BOLIVAR 1897b: 315.

= *Creoboter gemmata*. In: KIRBY 1904b: 291.

= *Creoboter gemmatus*. In: INGRISCH 1987: 32.

Size: Medium-sized (body length in mm: male 26, female 32-38).

Type material: Holotype male, Java, RMNH ?.

Distribution: China, India, Java, Myanmar, Nepal, Sunda Island, Thailand, Vietnam.

Records: **SMNK:** Nepal: Terai, R. Chitwan N.-Park, Gaida Camp, 27.35N-84.30E, leg. S.Ingrisch, 28.-29.X.1983 (male #01758); Nepal: Modi Khola-Tal, Namarjung, 28.18N-84.6E, 1000 m, leg. S.Ingrisch, 15.X.1983 (female #01759).

***Creobroter urbanus* (Fabricius, 1775)** Fig. 11

Mantis urbana Fabricius, 1775: 278.

= *Mantis urbana*. In: FABRICIUS 1781: 350.

= *Mantis urbana*. In: FABRICIUS 1787: 229.

= *Mantis urbana*. In: GMELIN-LINNÉ 1790: 2051.

= *Mantis urbana*. In: OLIVIER 1792: 630.

= *Mantis urbana*. In: FABRICIUS 1793: 23.

= *Mantis urbana*. In: LICHTENSTEIN 1802: 27-28.

= *Harpax urbana*. In: AUDINET-SERVILLE 1831: 50.

= *Harpax urbana*. In: BURMEISTER 1838: 550.

= *Mantis (Harpax) urbana*. In: DE HAAN 1842: 89.

= *Creobotra urbana*. In: SAUSSURE 1871a: 144-145.

= *Creoboter urbana*. In: KIRBY 1904b: 290.

= *Creoboter urbana*. In: JACOBSON & BIANCHI 1905: 154.

Size: Medium-sized (body length in mm: male 23, female 30).

Type material: Type sex ?, India, BMNH.

Distribution: Borneo-N, China, India, Java-E, Myanmar, Nepal, Philippines-N, Sumatra, Vietnam-N.

Records: **SMNK:** Nepal: Bhimpheedi, 27.33N-85.07E, 1450 m, leg. G.Lebisch & H.Probst, 07.-29.VI.1988 (female #01757).

Deiphobe Stål, 1877

Deiphobe Stål, 1877: 32-33.

= *Sphendale Stål*, 1877: 34.

Type generis: *Phasmomantis infuscata* Saussure, 1870: 235 (female) (Brazil - err.).

***Deiphobe brunneri* (Saussure, 1871d)** Fig. 12

Iris (Fischeria) brunneri Saussure, 1871d: 428-430.

= *Fischeria brunneri*. In: SAUSSURE 1872a: 57-58, pl. 8, fig. 11 (male).

= *Phasmomantis brunneri*. In: WESTWOOD 1889: 10.

= *Sphendale? brunneri*. In: KIRBY 1904b: 269.

= *Deiphobe brunneri*. In: GIGLIO-TOS 1927: 488.

= *Eremoplana microptera* Westwood, 1889: 9, 27, 32-33, pl. 3, fig. 5 (male).

Size: Large (body length in mm: male 70-84, female 80).

Type material: Syntype female, Nepal, BMNH;

Synonym: *E. microptera*: Syntype 2 females, India-NE: West Bengal: Burdwan, BMNH.

Distribution: India, Laos, Nepal, Thailand.

Records: **NMB:** Nepal: Bagmati, Sindhupalchok, Indrawati River, SW of Dhap, 27°54.554'N-85°07.603'E, 1015 m, leg. E.Sprecher, 13.V.2010 (male); **SMNK:** Nepal: Trisūli Bāzār, 27.54N-85.08E, 1700 m, lux, leg. G.Lebisch & H.Probst, 07.-29.VI.1988 (male #02234).

***Deiphobe incisa* WERNER, 1933** Fig. 13

Deiphobe incisa Werner, 1933: 900-901.

= *Deiphobe incisa*. In: MARSHALL 1975: 316.

= *Deiphobe prope incisa*. In: LOMBARDO 1993: 197-198, fig. 3-5.

= *Deiphobe incisa*. In: MUKHERJEE, HAZRA & GHOSH 1995: 200, 278, 279-280, 281.

= *Deiphobe incisa*. In: EHRMANN 2002: 118.

= *Deiphobe incisa*. In: MUKHERJEE, EHRMANN & CHATTERJEE 2014: 40-41.

Size: Large to very large (body length in mm: male 47-57, female 88-108).

Type material: Syntypes male and female India-N, IFRI; Syntype male India-NW, BMNH.

Distribution: India, Nepal, Myanmar ?.

Records: **DBUC ?:** Nepal: Kathmandu Valley (Godavari, 1600-1800 m), leg. W.Dierl & W.Schacht, 01.VI.1967 (male) [*Deiphobe prope incisa* ?]; **SMNK:** Nepal: Bhaktapur, 27.40N-85.25E, im Kathmandu Tal, 13 SE Kathmandu, leg. U.Sellenschlo, XI.1986 (male #02230); **ZSM:** Nepal: Prov. Chisipani, Chisipani Garhi, 1600 m, leg. W.Dierl & W.Schacht, 11.-15.VII.1967 (male and female); Nepal: Kathmandu Valley (Godavari, 1600-1800 m), leg. W.Dierl & W.Schacht, 01.VI.1967 (3 males) [*Deiphobe prope incisa* ?].

***Deiphobe infuscata* (Saussure, 1870)** Fig. 14

Phasmomantis infuscata Saussure, 1870: 235 (female) (Brazil - err.).

= *Phasmomantis infuscata*. In: SAUSSURE 1871a: 44 (female).

= *Phasmomantis infuscata*. In: SAUSSURE 1871e: 57 (female).

= *Iris (Fischeria) infuscata*. In: SAUSSURE 1871b: 303-304 (female).

= *Sphendale infuscata*. In: STÅL 1877: 55.

= *Sphendale infuscata*. In: BOLIVAR 1899: 809.

= *Sphendale infuscata*. In: KIRBY 1904b: 269.

= *Deiphobe infuscata*. In: GIGLIO-TOS 1927: 488.

= *Thespis ocellata* Saussure, 1871a: 130-131 (male).

= *Iris (Fischeria) ocellata*. In: SAUSSURE 1871b: 306.

= *Deiphobe ocellata*. In: STÅL 1877: 54.

Size: Large to very large (body length in mm: male 74-82, female 80-87).

Type material: Holotype female (without head), India-E, MNHN;

Synonym: *T. ocellata*: Syntype male, India, MHNG.

Distribution: India, Nepal, Sri Lanka.

Records: **NMB:** Nepal-E: Mechi, Dobhan-Phulvari [=Phulbari], 800-1200 m, leg. M.Brancucci, 08.VI.1985 (male); **NMB:** Basel-Expedition to Nepal Maj/June 2001- Nepal: Kosi-Pakhrihas, 27°03'N-87°18'E, 1700-1900 m, (#3), 27.-28.V.2001 (male); **ZSM:** Nepal: Jiri, 1900 m, Kiefernain, (#H28), 14.VI.1964 (male).

***Deiphobe mesomelas* (Olivier, 1792) Fig. 15**

Mantis mesomelas Olivier, 1792: 635-636.

- = *Deiphobe mesomelas*. In: GIGLIO-TOS 1927: 487.
- = *Mantis nympha* Stoll, 1813: 10-11, pl. 4, fig. 12 (female) (depository unknown).
- = *Coptopteryx stollii* Saussure, 1870: 230 (depository unknown).
- = *Sphendale infuscata* Saussure, 1870: 235 (female) (Brasilia ?).
- = *Sphendale infuscata* Saussure, 1870. In: BOLIVAR 1897b: 312 (male and female) (depository unknown).
- = *Sphendale robusta* Kirby, 1904a: 86.
- = *Sphendale robusta*. In: KIRBY 1904b: 269.

Size: Large (body length in mm: male 60-65, female 63-67).

Type material: Holotype female, India, depository unknown;

Synonym: *S. robusta*: Holotype female, Nepal, BMNH.

Distribution: India, Nepal.

Records: **SMNK:** Nepal-NE: Khumbu, zw. Samde & Hilajug, 27.50N-86.39E, Sagarmatha-N.-P., leg. K.Hellmann, 11.IX.1956 (3 females #02235, 02236, 02237).

***Didymocorypha* Wood-Mason, 1877**

Didymocorypha Wood-Mason, 1877: 221-222.

= *Pyrgocotis* Stål, 1877: 14.

Type generis: *Schizocephala* (*Didymocorypha*) *ensifera* Wood-Mason, 1877: 222 (juv. female) (India).

***Didymocorypha lanceolata* (Fabricius, 1798) Fig. 16**

Mantis lanceolata Fabricius, 1798: 191.

- = *Pyrgomantis? lanceolata* (Fabricius, 1798). In: WESTWOOD 1889: 3.
- = *Schizocephala* (*Didymocorypha*) *ensifera* Wood-Mason, 1877: 221-222 (depository unknown).
- = *Didymocorypha ensifera*. In: WOOD-MASON 1882: 24.
- = *Didymocorypha ensifera*. In: WOOD-MASON 1889a: 34-35, fig. 24-25.
- = *Didymocorypha ensifera*. In: WESTWOOD 1889: 3.
- = *Pyrgocotis gracilipes* Stål, 1877: 17 (depository unknown).
- = *Pyrgocotis gracilipes*. In: WESTWOOD 1889: 3.

Size: Medium-sized (body length in mm: male 27-35, female 40-42).

Type material: Holotype male, India-E, ZMUC;

Synonym: *Sch. (D.) ensifera*: unspecified primary type, sex ?, India-NE: Jharkhand, depository unknown.

Distribution: India, Nepal, Sri Lanka.

Records: **SMNK:** Nepal: Trisūli Bāzār, 27.54N-85.08E, 1700 m, leg. G.Lebisch & H.Probst, 07.-29.VI.1988 (male #02329); **ZSM:** Nepal: (Prov.Nr.1) East Daulaghat, 800-1200 m, leg. W.Dierl, 19.VII.1964 (male).

***Empusa* Illiger, 1798**

Empusa Illiger, 1798: 499.

= *Phantoma* Risso, 1826: 212.

= *Ampusa* Rambur, 1838: 17 (err. descr.).

Type generis: *Mantis pauperata* Fabricius, 1781: 346-347 (#9) (India).

***Empusa pauperata* (Fabricius, 1781) Fig. 17-19**

Mantis pauperata Fabricius, 1781: 346-347 (#9) (India).

- = *Mantis pauperata*. In: THUNBERG 1784: 61.
- = *Mantis pauperata*. In: HERBST 1786: 187, pl. 51, fig. 1.
- = *Mantis pauperata*. In: FABRICIUS 1787: 227.
- = *Mantis pauperata*. In: OLIVIER 1792: 627.
- = *Mantis pauperata*. In: FABRICIUS 1793: 17.
- = *Mantis pauperata*. In: LICHTENSTEIN 1802: 24.
- = *Mantis pauperata*. In: STOLL 1813: 33-34, pl. 10, fig. 40.
- = *Empusa pauperata*. In: ROY 2004: 8.
- = *Empusa pauperata*. In: EHRMANN 2011: 11.
- = *Gryllus unicoloris* Linné, 1763: 396 (#27) (male) (China).
- = *Empusa unicoloris* (Linné, 1763). In: SAUSSURE 1871a: 189-191 (male).
- = *Empusa unicoloris*. In: BOLIVAR 1897: 315.
- = *Mantis fronticornis* Stoll, 1813: 30, 31, pl. 9, fig. 34, 35 (nomen dubium).
- = *Empusa fronticornis*. In: AUDINET-SERVILLE 1839: 144.
- = *Mantis fronticornis*. In: ROY 2004: 9 (nomen dubium).
- = *Empusa humbertiana* Saussure, 1869: 60-61 (synonymized by KIRBY 1904b: 313).
- = *Empusa servillii* Saussure, 1872: 88 (female) (synonymized by GIGLIO-TOS 1927: 640).
- = *Empusa servillii*. In: SAUSSURE & ZEHNTNER 1895: 239-240.

Size: Medium-sized to large (body length in mm: male 44-50, female 55-65).

Type material: Holotype female, India: Madras, Coromandel, BMNH; [Holotype male Banks coll.].

Distribution: India, Iran, Nepal, Sri Lanka.

Records: **NME:** Nepal: Prov. Narayani Sauraha, Rapti River Ufer, 27°34'80"N-84°29'49"E, 1800 m NN, LF, leg. A.Weigel, 18.IV.2000 (female); **SMNK:** Nepal: Banepa, 27.38N-85.31E, im Kathmandu Tal, 25 SE Kathmandu, leg. U.Sellenschlo, XI.1986 (male #02607 and female #02608).

***Eomantis* Giglio-Tos, 1915**

Eomantis Giglio-Tos, 1915b: 47.

- = *Eomantis* Giglio-Tos, 1915. In: GIGLIO-TOS 1927: 140-141.
- = *Tropidomantis* (*Eomantis*) Giglio-Tos, 1915. In: BEIER 1935: 58-59.
- = *Eomantis* Giglio-Tos, 1915. In: MUKHERJEE & HAZRA 1993: 486.
- = *Eomantis* Giglio-Tos, 1915. In: MUKHERJEE, HAZRA & GHOSH 1995: 188, 199, 261.

Type generis: *Tropidomantis guttatipennis* Stål, 1877: 51 (male and female) (India).

***Eomantis guttatipennis* (Stål, 1877) Fig. 20**

Tropidomantis guttatipennis Stål, 1877: 51 (male and female) (India).

- = *Eomantis guttatipennis* Stål, 1877. In: GIGLIO-TOS 1915: 47.
- = *Tropidomantis* (*Eomantis*) *guttatipennis* Stål, 1877. In: BEIER 1935: 59.

Size: Small (body length in mm: male 24, female 26).

Type material: Holotype male, Nepal, NHRS, Allotype female, Nepal, NHMW.

Distribution: India, Myanmar, Nepal, Tibet, Vietnam.

Records: **SMNK:** Nepal: Kathmandu valley, NW1. d. city, leg. M.Hartmann, 17.IX.1992 (female #12585) (ex coll. NME); **ZSM:** Nepal: Rapti Tal, Monahari Khola, Belwa 350 m, leg. W.Dierl, W.Forster & W.Schacht, 08.V.1967 (11 males); Nepal: Kathmandu (Chauni 1400 m), leg. W.Dierl & W.Schacht, 23.IX.1967 (female).

Ephestiasula Giglio-Tos, 1915

Ephestiasula Giglio-Tos, 1915b: 101.

Hephestiasula (err. descr.) In: LOMBARDO 1993: 206.

= *Parahestiasula* Lombardo, 1995: 11; (syn. nov. Ehrmann & Borer).

Type generis: *Hestias pictipes* Wood-Mason, 1879: 258 (male and female) (India).

***Ephestiasula obscura* (Lombardo, 1995) comb. nov.** Fig. 21

= *Parahestiasula obscura* Lombardo, 1995: 12-14, fig. 1-5 (male).

= *Parahestiasula obscura*. In: EHRMANN 2002: 263.

= *Parahestiasula obscura*. In: OTTE & SPEARMAN 2005: 82.

Size: Small to medium-sized (body length in mm: male 23, female 27).

Type material: Holotype male, Paratypes 3 females, ZSM, Paratype female #06689, SMNK, Paratype female, DBUC, all same data: Nepal: Rapti-Tal, Monahari Khola, Belwa 350 m, leg. W.Dierl, W.Forster & W.Schacht, 07.-12.V.1967.

Distribution: Nepal.

Remarks: Lombardo described in 1995 the genus *Parahestiasula* with the species *obscura* from the Rapti Valley. Upon detailed examination, the authors realised, together with C. Schwarz and T. Schulze, that the genus *Parahestiasula* is identical to the genus *Ephestiasula*. The genus was thus synonymised and the species *obscura* was classified under *Ephestiasula*. Consequently, *Parahestiasula* is a new synonym of *Ephestiasula* Giglio-Tos, 1915 and *Ephestiasula obscura* (Lombardo, 1995) the new combination.

***Ephestiasula pictipes* (Wood-Mason, 1879) Fig. 22-24**

Hestias pictipes Wood-Mason, 1879: 258 (male and female) (India).

= *Hestias* Wood-Mason, 1884: pl. 13, fig. 5-5a.

= *Pachymantis amoena* Bolivar, 1897b: 314-315 (female) (synonymized by GIGLIO-TOS 1927: 547).

= *Hestiasula pictipes* (Wood-Mason, 1879). In: KIRBY 1904b: 288.

= *Hestias pictipes*. In: MUKHERJEE, DAS & HAZRA 2005: 145.

= *Ephestiasula pictipes*. In: MATERNA & SCHULZE 2008: 78, 1 fig.

= *Ephestiasula pictipes*. In: MUKHERJEE, STIEWE & GHORAI 2010: 169, 171-173, fig. 5-8.

Size: Small (body length in mm: male 17, female 19).

Type material: Holotype male (#1253/1), Allotype female (#1254/1), India-C: Jabalpur-Marble Rocks, NZSI.

Distribution: India, Nepal.

Records: **DBUC ?:** Nepal: Rapti Tal, Monahari, Khola, Belwa 350 m, leg. W.Dierl, W.Forster & W.Schacht, 05.-12.V.1967 (3 male); **SMNK:** Nepal-S: Jhawani, 27.35N-84.30E, im Königl.-N.-P., leg. K.Hellmann, IX.1956 (male #02736); Nepal: Kadhmandu, Valley Godavari, 1600 m, leg. G.Lebisch & H.Probst, 07.-29.VI.1988 (female #03628); **ZSM:** Nepal: Sun Khosi Tal, 2150 m, leg. G.Ebert & H.Falkner, 02.+05.V.1962 (3 juveniles); Nepal: Rapti Tal, Monahari, Khola, Belwa 350 m, leg. W.Dierl, W.Forster & W.Schacht, 05.-12.V.1967 (9 males).

Gongylus Thunberg, 1815

Gongylus Thunberg, 1815: 215, 220.

= *Empusa* (*Gongylus*) Burmeister, 1838: 545.

Type generis: *Gryllus* (*Mantis*) *gongylodes* Linné, 1758: 426 (#4) (female) (India).

***Gongylus gongylodes* (Linné, 1758) Fig. 25, 26**

Gryllus (*Mantis*) *gongylodes* Linné, 1758: 426 (#4) (female) (India).

= *Gryllus gongylodes*. In: LINNÉ 1764: 112.

= *Gryllo gongylodi* Linné. In: SEBA 1765: 29, pl. 68, fig. 9-12.

= *Mantis gongylodes*. In: LINNÉ 1767: 690.

= *Mantis gongylodes*. In: DRURY 1770: 129-130, pl. 50, fig. 2 (female).

= *Mantis gongylodes*. In: FABRICIUS 1775: 275.

= *Mantis gongylodes*. In: GOEZE 1778: 22.

= *Mantis gongylodes*. In: FABRICIUS 1781: 346.

= *Mantis gongylodes*. In: FABRICIUS 1787: 227.

= *Mantis gongylodes*. In: GMELIN-LINNÉ 1790: 2049.

= *Mantis gongylodes*. In: OLIVIER 1792: 626-627.

= *Mantis gongylodes*. In: FABRICIUS 1793: 17.

= *Mantis gongylodes*. In: LICHTENSTEIN 1802: 21-22.

= *Empusa gongylodes*. In: LATREILLE 1807: 90.

= *Mantis gongylodes*. In: STOLL 1813: 46-48, pl. 16, fig. 58-58a, 59 (female).

= *Gongylus gongylodes*. In: THUNBERG 1815: 5: 294.

= *Empusa gongylodes*. In: AUDINET-SERVILLE 1831: 48.

= *Mantis gongylodes*. In: BRULLÉ 1835: 78-79, pl. 6, fig. 2 (female).

= *Empusa gongylodes*. In: WESTWOOD 1837: 121-122, pl. 50, fig. 2 (female).

= *Empusa* (*Gongylodes*) *gongylodes*. In: BURMEISTER 1838: 545.

= *Empusa gongylodes*. In: AUDINET-SERVILLE 1839: 141-142.

= *Empusa* (*Empusa*) *gongylodes*. In: BLANCHARD 1840: 10-11.

= *Empusa gongylodes*. In: CHARPENTIER 1841: 296-297.

= *Gongylus gongyloides*. In: BRUNNER DE WATTENWYL 1893: 76.

= *Gongylus gongylodes*. In: BOLIVAR 1897b: 316.

= *Gongylus gongyloides*. In: BOLIVAR 1899: 809.

= *Gongylus gongyloides*. In: CHOPARD 1949: 396, fig. 82e (ootheca).

= *Gongylus gongylodes*. In: EHRMANN 2002: 394, fig. (G.trachelophyllus-err. descr.) (Thailand) (female).

= *Gongylus gongylodes*. In: ROY 2004: 5, 10, 11, 15, fig. 2, 8-12, 24.

= *Mantis flabellicornis* Fabricius, 1793: 16-17 (male) (depository unknown) (synonymized by KIRBY 1904b: 311).

= *Mantis flabellicornis*. In: LICHTENSTEIN 1802: 22.

= *Empusa flabellicornis*. In: LATREILLE 1802: 90.

= *Mantis flabellicornis*. In: STOLL 1813: 49-50, pl. 17, fig. 61 (male).

= *Empusa flabellicornis*. In: AUDINET-SERVILLE 1831: 48.

Size: Large to very large (body length in mm: male 60-70, female 75-100).

Type material: Holotype female, India, LSUK.

Distribution: India, Java, Myanmar, Nepal, Sri Lanka, Thailand.

Records: **SMNK:** Nepal-S: Jhawani, 27.35N-84.30E, im Königl.-N.-P., leg. K.Hellmann, IX.1956 (male #03340 and female #03341).

***Gonypetyllis* Wood-Mason, 1891**

Gonypetyllis Wood-Mason, 1891: 67.

= *Haldwania* Beier, 1930: 440-441.

= *Paula* Liana, 2009: 287-292.

Type generis: *Gonypetyllis semuncialis* Wood-Mason, 1891: 67, pl. 2, fig. 5-5a-5b (male) (India).

***Gonypetyllis semuncialis* Wood-Mason, 1891 Fig. 27**

Gonypetyllis semuncialis Wood-Mason, 1891: 67, pl. 2, fig. 5, 5a, 5b (male) (India).

= *Gonypetyllis semuncialis*. In: MUKHERJEE et al. 1995: 185, 192, 200, 264, 273-274, 353, fig. 96-99 (male).

= *Haldwania liliputana* Beier, 1930: 441-442, fig. 2 (male) (synonymized by MUKHERJEE & HAZRA 1993: 488).

= *Haldwania liliputana*. In: WERNER 1931: 1329-1330.

= *Haldwania liliputana*. In: MATHUR, BEESON & CHATTERJEE 1934: 14.

= *Haldwania liliputana*. In: BEIER 1935: 31.

= *Haldwania liliputana*. In: ROONWAL & BHASIN 1951: 313, 316.

= *Haldwania liliputana*. In: BEIER 1964a: 948.

- = *Haldwania liliputana*. In: BEIER 1964b: 184.
- = *Haldwania liliputana*. In: BEIER 1968: 10.
- = *Haldwania liliputana*. In: DANIEL, KUMAR & BAKTHAVATSALAM 1983: 91.
- = *Haldwania liliputana*. In: LOMBARDO 1993: 196.
- = *Haldwania liliputana*. In: OTTE & SPEARMAN 2005: 154.
- = *Haldwania liliputana*. In: LIANA 2009: 288, 290, 291.
- = *Paula micra* Liana, 2009: 287-292 (female), fig. 1-7 (synonymized in MUKHERJEE et al. 2014: 3, 27).

Size: Small (body length in mm: male 11, female 15).

Type material: Holotype male, India, NZSI ?;

Synonym: *H. liliputana*: Holotype male, India: Haldwania, BMNH;
Synonym: *P. micra*: Holotype female, Java: Baluram, Beokol and Banjuwangi, MIZ.

Distribution: India-NW: Uttarakhand, District Haldwania, Kumaon; Java, Nepal.

Records: ZSM: Nepal: Rapti-Tal, Monahari Khola, Belwa 350 m, leg. W.Dierl, W.Forster & W.Schacht, 05.V.1967 (male) [*Haldwania liliputana*].

Heliomantis Giglio-Tos, 1915

- Heliomantis* Giglio-Tos, 1915: 2.
- = *Paraspilota* Bolivar, 1914: 205-206 (female) (nec *Paraspilota* Bates, 1888: 374-375), (Evgeny Shcherbakov, in litt. 14.V.2015).
- = *Deiroharpax* Werner, 1916: 283.
- = *Paraspilota*. In: GIGLIO-TOS 1919: 77-79.
- = *Heliomantis*. In: GIGLIO-TOS 1919: 72, 77-79.
- = *Deiroharpax*. In: GIGLIO-TOS 1927: 524.
- = *Heliomantis*. In: BEIER 1964: 939.
- = *Heliomantis*. In: BEIER 1968: 6.
- = *Heliomantis*. In: MUKHERJEE & HAZRA 1993: 477.
- = *Heliomantis*. In: MUKHERJEE, HAZRA & GHOSH 1995: 197, 209.
- = *Heliomantis*. In: EHRMANN 2002: 169.
- = *Heliomantis*. In: OTTE & SPEARMAN 2005: 75-76.
- = *Heliomantis*. In: GHATE, JADHAV, SURESHAN & SHARMA 2012: 4.

Type generis: *Polyspilota elegans* Navás, 1904: 132-133 (male and female) (Kurseong in Himalaya).

Heliomantis elegans (Navás, 1904) Fig. 28

- Polyspilota elegans* Navás, 1904: 132-133 (male and female) (Kurseong in Himalaya).
- = *Paraspilota elegans* (Navás, 1904). In: BOLIVAR 1914: 206 (female) (Kurseong, Himalaya) (comb. nov.).
- = *Heliomantis elegans*. In: GIGLIO-TOS 1915a: 2 (Nepal: Kurseong, Himalaya).
- = *Deiroharpax viridis* Werner, 1916: 283-284, fig. 6 (male) (India-NE: Sikkim) (synonymized by BEIER 1934: 11).
- = *Polyspilota elegans*. In: GIGLIO-TOS 1919: 77-79 (Himalaya).
- = *Paraspilota elegans*. In: GIGLIO-TOS 1919: 77-79 (Himalaya).
- = *Heliomantis elegans*. In: GIGLIO-TOS 1919: 77-79 (Himalaya).
- = *Heliomantis elegans*. In: GIGLIO-TOS 1927: 522 (Himalaya).
- = *Deiroharpax viridis*. In: GIGLIO-TOS 1927: 524 (India-NE: Sikkim).
- = *Heliomantis elegans*. In: WERNER 1930a: 6 (Remarks: Beier writes in a letter to Werner: *Deiroharpax* is synonymous of *Heliomantis elegans*).
- = *Deiroharpax viridis*. In: WERNER 1930a: 6 (syn. by Beier, 1934: 11).
- = *Heliomantis elegans*. In: BEIER 1934: 11 (Himalaya, Sikkim).
- = *Heliomantis elegans*. In: LOMBARDO 1993: 202 (male) (Nepal).
- = *Heliomantis elegans*. In: MUKHERJEE & HAZRA 1993: 479-480 (male and female) (India-NW: Assam, Sikkim, West Bengal: Darjeeling).
- = *Heliomantis elegans*. In: MUKHERJEE, HAZRA & GHOSH 1995: 219-220, 345 (male and female) figs. 35-37 (male) (India-NW: Assam, Sikkim, West Bengal).
- = *Heliomantis elegans*. In: EHRMANN 2002: 169 (male) (India-NE, Nepal).
- = *Heliomantis elegans*. In: OTTE & SPEARMAN 2005: 76 (male) (Nepal: Himalaya, Kurseong).
- = *Heliomantis elegans*. In: GHATE, JADHAV, SURESHAN & SHARMA 2012: 8 (India, Nepal).
- = *Heliomantis elegans*. In: MUKHERJEE, EHRMANN & CHATTERJEE 2014: 8 (male and female) (India, Nepal).

Size: Medium-sized to large (body length in mm: male 32-37, female 47-54).

Type material: Type material: Syntype female (#2614) (MN-CN-Ent #140643), Kurseong in Himalaya, MNMS (=MNCN) (Type not in MZBS), all data in litt. 14.V. and 10.VI.2015 Evgeny Shcherbakov);

Synonym: *D. viridis*: Holotype male, India-NE: Sikkim, Staudinger, ex coll. Brunner de Wattenwyl (#22.423) (#504) NHMW.

Distribution: Bhutan: 1 male NMB, 1 male SMNK; India-NE: 1 male NHMW, 1 female MNMS, 2 males ZSM; Nepal: 1 female SMNK, 1 male ZSM.

Records: SMNK: Nepal: Bartar, 28.07N-84.24E, 2150 m, lux, leg. G.Lebisch & H.Probst, 07.-29.VI.1988 (female #03625); **ZSM:** Nepal: Kathmandu Valley, Godavari, 1600-1800 m, leg. W.Dierl & W.Schacht, 06.VI.1967 (male).

Remarks: Locus typicus: Kurseong [Kurseong, city centre (26°52'55.96"N - 88°16'43.86"E)] is a city at 1500 m.a.s.l. in the district of Darjeeling in the Indian state of West Bengal, at the southeastern foothills of the Himalayas. Kurseong is situated about 32 km in the south of the city centre of Darjeeling and only 12 km in the east of the border to Nepal.

Hestiasula Saussure, 1871

- Hestiasula* Saussure, 1871b: 329-330.
- Hestiasula* Saussure, 1871d: 453-454.
- = *Hestias* Saussure, 1872a: 83.
- = *Hestias* Saussure, 1871b. In: WOOD-MASON 1876: 175.
- = *Hestias* Saussure, 1871b. In: WOOD-MASON 1879: 257.
- = *Catastienula* Giglio-Tos, 1915b: 101 (synonymized by BEIER 1934: 16).

Type generis: *Hestiasula brunneriana* SAUSSURE, 1871b: 330-331 (female) (India).

Hestiasula brunneriana Saussure, 1871b Fig. 29, 30

- Hestiasula brunneriana* Saussure, 1871b: 330-331 (female) (Indes orientales: Sylhet).
- = *Hestiasula brunneriana*. In: SAUSSURE, 1871d: 454-455 (female) (Indes orientales: Sylhet).
- = *Hestias brunneriana*. In: WOOD-MASON 1876: 175.
- = *Hestias brunneriana*. In: WOOD-MASON 1879: 258-259.
- = *Hestias* Wood-Mason, 1884: pl. 13, fig. 1-1b.
- = *Hestiasula ceylonica* Beier, 1956: 39-40 (male) (Sri Lanka) (synonym ?).

Size: Small to medium-sized (body length in mm: male 21, female 26-29).

Type material: Holotype female, India-N: Sylhet (coll. Brunner v. Wattenwyl) (#531), NHMW.

Distribution: India, Nepal, Pakistan-W, Sri Lanka.

Records: SMNK: Nepal: P: Mahakali, D: Kanchanpur, 17 km NE Mahendranagar, vic. Bedkol lake, 29°01'25"-80°19'09"E, ca. 500 m NN, leg. J.Kübner, 02.VII.2009 (female #12463) (ex coll. NME).

Remarks: *Hestiasula brunneriana* found in Nepal and India show a variation in colour pattern on the inner surface of femur at the foreleg (WOOD-MASON 1884: pl. 13, fig. 1b; MUKHERJEE et al. 1995: 220-221; SURESHAN 2010: 13-14, fig. 19). In addition to the three black stripes, a black dot above the claw groove is present in some individuals (Fig. A). The authors interpret this variation as an intraspecific phenomenon. To support this hypothesis, more specimens, as well as the male genitalia, need to be studied.

The private collection of Tobias Schulze contains one male and three female specimens from Goa (West-India). These



Figure A: Female *Hestiasula brunneriana*, left foreleg, inner surface of femur: I) three stripes with black dot above claw groove, Nepal (SMNK #12463); II) three stripes without black dot above claw groove, Sri Lanka (SMNK #03689). Photos by R. Ehrmann.

vary in the expression of the black dot above the claw groove from clearly present to absent. The same collection harbours one female and three male specimens from the state of Tamil Nadu (South-East India), all lacking the black dot above the claw groove.

***Hierodula* Burmeister, 1838**

- Hierodula* Burmeister, 1838: 536.
 = *Ephierodula* Giglio-Tos, 1912: 63-64 (err. synonym).
 = *Parhierodula* Giglio-Tos, 1912: 108-109.
 = *Zopheromantis* Tindale, 1924: 550-551 (err. synonym).

Type generis: *Mantis* (*Hierodula*) *membranacea* Burmeister, 1838: 536 (#30) (male) (India).

***Hierodula coarctata* Saussure, 1869 Fig. 31**

- Hierodula coarctata* Saussure, 1869: 67.
 = *Hierodula coarctata*. In: SAUSSURE 1871a: 85-86, pl. 5, fig. 24 (female).
 = *Hierodula coarctata*. In: BORRE 1883: 81.
 = *Hierodula coarctata*. In: WESTWOOD 1889: 34, pl. 4, fig. 1 (female).
 = *Parhierodula coarctata*. In: GIGLIO-TOS 1912: 124.
 = *Hierodula coarctata*. In: WERNER 1916: 264-265.
 = *Parhierodula* (*Parhierodula*) *coarctata*. In: GIGLIO-TOS 1927: 459.
 = *Hierodula coarctata*. In: EHRMANN 2002: 177.

Size: Medium-sized to large (body length in mm: male 42-50, female 53-70).

Type material: Holotype male, India-E, MHNG.

Distribution: India, Java, Nepal, Pakistan.

Records: SMNK: Nepal: Distr. Chitwan, Royal Chitwan N.-P. Sauraha, 150 m, leg. M.Hauser, 31.V.-04.VI.1997 (male #03845 and female #03846).

***Hierodula membranacea* Burmeister, 1838 Fig. 32**

- Mantis* (*Hierodula*) *membranacea* Burmeister, 1838: 536 (#30) (male) (India).
 = *Mantis* (*Mantis*) *membranacea* Burmeister, 1838. In: DE HAAN 1842: 68.
 = *Hierodula membranacea*. In: CHOPARD 1924: 175 (female) (Barkuda Island).
 = *Hierodula* (*Hierodula*) *membranacea*. In: BEIER 1935: 82.
 = *Hierodula membranacea*. In: EHRMANN 2002: 179.
 = *Hierodula* (*Hierodula*) *membranacea*. In: VYJAYANDI & NARENDRAN 2003: 315, 316, 319, 320.
 = *Stagmatoptera birivia* Saussure, 1871e: 89-91 (male and female), pl. 1, fig. 8 (female) (America meridionale, Surinam - err.).
 = *Hierodula birivia*. In: SAUSSURE 1872a: 41-42 (female) (India orientalis) (depository unknown).
 = *Hierodula birivia*. In: WOOD-MASON 1878a: 146.
 = *Hierodula birivia*. In: BORRE 1883: 68 (11).
 = *Hierodula birivia*. In: BOLIVAR 1897b: 310.
 = *Hierodula birivia*. In: BOLIVAR 1899: 809.

Size: Large (body length in mm: male 65-78, female 80-88).

Type material: Syntype (#552) male, India-E, ZMHB, Syntype (#552) male, India-orient., ZMHB.

Distribution: China-S, India, Java, Nepal, Sri Lanka, Thailand.

Records: SMNK: Nepal: Distr. Chitwan, Royal Chitwan N.-P. Sauraha, 150 m, leg. M.Hauser, 31.V.-04.VI.1997 (male #03847); Nepal-S: Jhawani, 27.35N-84.30E, im Königl.-N.-P., leg. K.Hellmann, IX.1956 (female #03848); **ZSM:** Nepal: Rapti Tal Monahari Khola, Belwa 350 m, leg. W.Dierl, W.Forster & W.Schacht, 10.V.1967 (male); [*Hierodula membranacea* (male) err. det. Lombardo in Studies on the Mantodea of Nepal 1993: 199].

Remarks: Burmeister writes in the „Handbuch der Entomologie“, published in 1838, on page 536 #30 following information about the two type specimens of *Hierodula membranacea*: “2 Männchen im Königl. Museum, deren Vaterland unbekannt, wahrscheinlich aber Ostindien ist“. Thus, the origin of the two type specimens is unknown, however it is supposed to be in East India.

***Hierodula patellifera* (Audinet-Serville, 1839) Fig. 33**

- Mantis patellifera* Audinet-Serville, 1839: 185-186.
 = *Mantis* (*Mantis*) *patellifera*. In: DE HAAN 1842: 70.
 = *Hierodula patellifera*. In: WESTWOOD 1889: 12, 27, 35, pl. 4, fig. 5.
 = *Hierodula* (*Hierodula*) *patellifera*. In: BEIER 1935: 203: 83.
 = *Hierodula patellifera patellifera*. In: EHRMANN 2002: 180.
 = *Hierodula patellifera patellifera*. In: CHATTERJEE & SRINIVASAN 2013: 131-135.
 = *Mantis bipapilla* Audinet-Serville, 1839: 188-189 (synonymized by HEBARD 1920: 58-59).
 = *Mantis bipapilla*. In: CHARPENTIER 1841: 291-292.
 = *Mantis* (*Mantis*) *bipapilla*. In: DE HAAN 1842: 70.
 = *Hierodula bipapilla*. In: SAUSSURE 1871a: 79-80, pl. 5, fig. 28 (male and female).
 = *Hierodula bipapilla*. In: BORRE 1883: 68.
 = *Hierodula bipapilla?* In: WESTWOOD 1889: 12, 34, pl. 4, fig. 2 (male).
 = *Hierodula bipapilla*. In: WESTWOOD 1889: 12, 27, 34-35, pl. 5, fig. 2 (female).
 = *Hierodula bipapilla*. In: KIRBY 1904b: 245.
 = *Hierodula bipapilla*. In: SHIRAKI 1911: 324-326.
 = *Hierodula bipapilla*. In: GIGLIO-TOS 1912: 96-98.
 = *Hierodula* (*Hierodula*) *bipapilla*. In: GIGLIO-TOS 1927: 448.
 = *Hierodula* (*Hierodula*) *bipapilla*. In: VYJAYANDI & NARENDRAN 2003: 315, 317.
 = *Hierodula simulacrum*. In: SAUSSURE 1869: 68.
 = *Hierodula simulacrum*. In: SAUSSURE 1871a: 77-78, pl. 5, fig. 23 (male and female).
 = *Hierodula simulacrum*. In: WOOD-MASON 1882: 30.
 = *Hierodula simulacrum*. In: BORRE 1883: 68.
 = *Hierodula manillensis* Saussure, 1870: 233 (male and female) (Manila) (synonymized by HEBARD 1920: 58-59).
 = *Hierodula* (*H.*) *manillensis*. In: GIGLIO-TOS 1912: 95-96.
 = *Hierodula* (*H.*) *manillensis*. In: GIGLIO-TOS 1927: 447-448.
 = *Hierodula manillensis*. In: EHRMANN 2002: 180.
 = *Hierodula raptorica* Stål, 1877b: 38 (female) (synonymized by GIGLIO-TOS 1927: 447-448).
 = *Hierodula dispar* Kirby, 1900: 146-147 (synonymized by GIGLIO-TOS 1927: 448).
 = *Hierodula* (*H.*) *manillana* Giglio-Tos, 1912: 96 (synonymized by HEBARD 1920: 58-49).
 = *Hierodula manillana*. In: WERNER 1926: 228-229.
 = *Hierodula* (*H.*) *manillana*. In: GIGLIO-TOS 1927: 448 (male and female).
 = *Hierodula* (*H.*) *manillana*. In: EHRMANN 2002: 180.
 = *Hierodula* (*H.*) *patellifera manillana*. In: BEIER 1935: 83.
 = *Hierodula patellifera manillana?* Giglio-Tos, 1912. In: EHRMANN 2002: 180.
 = *Hierodula saussurei* Kirby, 1904b: 245 (synonymized by HEBARD 1920).
 = *Hierodula* (*H.*) *saussurei*. In: GIGLIO-TOS 1912: 94-95.
 = *Hierodula saussurei*. In: WERNER 1926: 228-229.
 = *Hierodula* (*H.*) *saussurei*. In: GIGLIO-TOS 1927: 447.
 = *Hierodula saussurei*. In: WERNER 1930a: 4.
 = *Hierodula saussurei*. In: EHRMANN 2002: 180.
 = *Hierodula* (*H.*) *assamensis* MUKHERJEE et al., 1995: 185, 201, 290-291, fig.

- 111-113 (synonymized in MUKHERJEE et al. 2014: 4, 32).
 = *Hierodula assamensis*. In: EHRMANN 2002: 176.
 = *Hierodula (Hierodula) assamensis*. In: VYJAYANDI & NARENDRAN 2003: 315, 317.

Size: Large (body length in mm: male 50-60, female 53-70).
Type material: Holotype male, Allotype female, Java, MNHN;
 Synonym: *M. bipapilla*: Holotype female, Java, MRSN;
 Synonym: *H. simulacrum*: unspecified primary type, depository unknown;
 Synonym: *H. manillensis*: unspecified primary type, Manila, depository unknown;
 Synonym: *H. dispar*: Syntypes male and 3 females, Christmas Island, BMNH;
 Synonym: *H. raptoria*: Holotype female, Philippines, NHRS;
 Synonym: *H. manillana* Giglio-Tos: Syntype male and female, Philippines: Luzon Island, Manilla, MHNG;
 Synonym: *H. saussurei*: unspecified primary type, China, Japan, depository unknown;
 Synonym: *H. assamensis*: Holotype female, India: Assam: Naga Hills, NZSI.

Distribution: China-S, Hawaii (Big Island), India, Japan, Java, Korea, New Guinea, Philippines, Sumba-W, Taiwan.

Records: SMNK: Nepal: Nepalgunj, Hotel Batika, 28°02'59"N-81°36'56"E, 235 m NN, LF, leg. A.Weigel, 18.VI.1999 (male #12586) (ex coll. NME); Nepal: Nepalgunj, Hotel Batika, 28°02'59"N-81°36'56"E, 235 m NN, LF, leg. A.Weigel, 18.VI.1999 (female #12587) (ex coll. NME); Nepal: Nepalgunj, Hotel Batika, 28°02'36"N-81°36'35"E, 180 m NN, LF, leg. M.Hartmann, 11.-12.VII.2001 (male #12588) (ex coll. NME).

Hierodula tenuidentata Saussure, 1869 Fig. 34

- Hierodula tenuidentata* Saussure, 1869: 68.
 = *Sphodromantis tenuidentata*. In: KIRBY 1904b: 244.
 = *Hierodula tenuidentata tenuidentata*. In: EHRMANN 2002: 183.
 = *Hierodula tenuidentata*. In: EHRMANN 2011: 17.
 = *Hierodula (Hierodula) tenuidentata*. In: VYJAYANDI & NARENDRAN 2003: 315, 317.
 = *Hierodula tenuidentata darvasica* Lindt, 1963: 3-7, fig. 1a-1b, 2a-2b (synonymized in MUKHERJEE et al. 2014: 4, 32).
 = *Hierodula simulacrum* (FABRICIUS, 1793). In: WESTWOOD 1889: 11, 27, 34, pl. 6, fig. 5 (female) (India-E).
 = ?*Hierodula simulacrum* var. ? In: WESTWOOD 1889: 11 (China, India, Sri Lanka).
 = *Hierodula westwoodi* Kirby, 1904b: 247; (n.nom. for *Hierodula simulacrum* Westwood, 1889: 11, 27, 34, No. 37).
 = *Hierodula westwoodi*. In: KUMAR & RAJKHOWA 2012: 189, pl. 15, fig. 34-37.
 = *Hierodula heterodera* Westwood, 1889: 12, 27, 34 (male) (Bengal) (synonymized in MUKHERJEE et al. 2014: 4, 32, 36).

Size: Large (body length in mm: male 50-57, female 60).

Type material: Holotype female, India, MHNG;
 Synonym: *H. heterodera*: Type male (#Orth: 483), India: Bengal, OUMNH;
 Synonym: *H. westwoodi*: Holotype female, India: Madras, BMNH;
 Synonym: *H. t. darvasica*: Holotype male, Tajikistan: Darvazskij mountains, Vantsch-riverside, 1800 m, ZIN.
Distribution: Borneo, India, Nepal, Sundainseln, Tajikistan, Turkestan, Turkmenistan.

Records: DBUC ?: Nepal: Rapti Tal Monahari Khola, Belwa 350 m, leg. W.Dierl, W.Forster & W.Schacht, 07.-11.V.1967 (male and female); **SMNK:** Nepal: Kakani, 27.49N-85.15E, 1450 m, leg. G.Lebisch & H.Probst, 07.-29.VI.1988 (fema-

le #03843); Nepal: Naubise, 27.43N-85.29E, 1550 m, leg. G.Lebisch & H.Probst, 07.-29.VI.1988 (female #03844); Nepal: Lamjung Himal, zw. Namarjung & Tangting, 28.19N-84.7E, 1000-1500 m, leg. S.Ingrisch, 22.X.1983 (female #03850); Nepal: Modi Khola-Tal, bei Thak, 28.17N-84.5E, 900 m, leg. S.Ingrisch, 14.X.1983 (female #03851); Nepal: Bhaktapur, 27.40N-85.25E, im Kathmandu Tal, 13 SE Kathmandu, leg. U.Sellenschlo, XI.1986 (female #11956); **ZSM:** Nepal: Katmandu-Chauni, 1400 m, leg. W.Dierl & W.Schacht, 11.VI.1967 (male); Nepal: Rapti Tal Monahari Khola, Belwa 350 m, leg. W.Dierl, W.Forster & W.Schacht, 07.-11.V.1967 (2 males and female).

Hierodula transcaucasica Br. de Wattenwyl, 1878 Fig. 35

- Hierodula transcaucasica* Brunner de Wattenwyl, 1878: 88.
 = *Sphodromantis transcaucasica*. In: KIRBY 1904b: 244.
 = *Hierodula (H.) transcaucasica*. In: GIGLIO-TOS 1927: 444.
 = *Hierodula (Sphodromantis) transcaucasica*. In: BEIER 1935: 88.
 = *Sphodromantis transcaucasica*. In: BEIER 1962: 112.
 = *Sphodromantis transcaucasica*. In: BEIER 1967: 196-197.
 = *Hierodula transcaucasica*. In: EHRMANN 2002: 183.
 = *Sphodromantis transcaucasica*. In: OTTE & SPEARMAN 2005: 274-275.
 = *Hierodula transcaucasica*. In: EHRMANN 2011: 17.

Size: Medium-sized (body length in mm: male 45, female 50).

Type material: Lectotype: female, Iran-N: Astrabad, NHMW.

Distribution: Afghanistan, Iran, Caucasus, Nepal, Turkestan, Turkey.

Records: SMNK: Nepal: Lamjung Himal, zw. Baglungpani & Nalma, 28.13N-84.20E, 1000-1500 m, leg. S.Ingrisch, 22.X.1983, [cf. *H. tenuidentata* Saussure, 1869] (female #03849).

Hierodula unimaculata (Olivier, 1792) Fig. 36

- Mantis unimaculata* Olivier, 1792: 640-641.
 = *Hierodula (Hierodula) unimaculata*. In: BEIER 1935: 82.
 = *Hierodula unimaculata*. In: EHRMANN 2002: 183.
 = *Hierodula (Hierodula) unimaculata*. In: VYJAYANDI & NARENDRAN 2003: 315, 316.
 = *Mantis simulacrum*. In: LICHTENSTEIN 1802: 28 (synonymized by GIGLIO-TOS 1912: 89).
 = *Mantis (Hierodula) simulacrum*. In: BURMEISTER 1838: 536.
 = *Mantis (Mantis) simulacrum*. In: DE HAAN 1842: 69.
 = *Mantis simulacrum*. In: CHARPENTIER 1844: 304.
 = *Mantis notata* Stoll, 1813: 42, pl. 12, fig. 49 (male ?) (synonymized by GIGLIO-TOS 1912: 89).
 = *Hierodula notata*. In: SAUSSURE 1871a: 83-84, pl. 5, fig. 31 (male and female).
 = *Hierodula (Mantis) notata*. In: WOOD-MASON 1878a: 145-146 (female).
 = *Hierodula (Mantis) notata*. In: BOLIVAR 1897b: 310.

Size: Large (body length in mm: male 53-57, female 66).

Type material: Type male, India: Tranquebar, depository unknown;

Synonym: *M. simulacrum*: unspecified primary type, depository unknown;

Synonym: *M. notata*: unspecified primary type, depository unknown.

Distribution: China, India, Java, Maledives, Myanmar, Nepal, Sri Lanka, Thailand, Vietnam.

Records: SMNK: Nepal: Prov. Koshi, 26.49.41N-87.09.19E, Chatara, Koshi Tappu, Wildlife Reservat, 115 m, leg. J.Weipert, 23.-24.IV.2003 (male #11907) (ex coll. NME).

Humbertiella Saussure, 1869

Humbertiella Saussure, 1869: 55.
= *Theopompula* Giglio-Tos, 1917: 84-85.

Type generis: *Humbertiella ceylonica* Saussure, 1869: 62 (male) (Sri Lanka).

Humbertiella ceylonica Saussure, 1869 Fig. 37, 38

Humbertiella ceylonica Saussure, 1869: 62 (male) (Sri Lanka).
= *Humbertiella ceylonica*. In: BEIER 1935: 7.
= *Theopompa septentrionum* Wood-Mason, 1891: 64-66, pl. 1, fig. 3 (female).
= *Humbertiella septentrionum*. In: KIRBY 1904b: 214.
= *Theopompa septentrionum* Wood-Mason, 1891 (synonymized by GIGLIO-TOS 1927: 64-65).
= *Theopompa taprobanarum* Wood-Mason, 1891: 62-64, pl. 1, fig. 1 (female).
= *Theopompa taprobanarum* Wood-Mason, 1891 (synonymized by KIRBY 1904b: 214).
= *Theopompula taprobanarum*. In: GIGLIO-TOS 1917: 84-85.
= *Theopompula taprobanarum*. In: GIGLIO-TOS 1927: 67.
= *Humbertiella taprobanarum*. In: BEIER 1935: 7.
= *Humbertiella taprobanarum*. In: EHRMANN 2002: 189.
= *Humbertiella taprobanarum*. In: OTTE & SPEARMAN 2005: 131-132.
= *Theopompa assimolata* Wood-Mason, 1891: 62-64, pl. 1, fig. 2, 4 (female).
= *Humbertiella assimolata*. In: KIRBY 1904b: 214.
= *Theopompula assimolata*. In: GIGLIO-TOS 1917: 84-85.
= *Theopompula assimolata*. In: GIGLIO-TOS 1927: 67.
= ?*Humbertiella assimolata* Wood-Mason, 1891: pl. 1, fig. 2, 4 (synonymized by BEIER 1935: 7).

Size: Medium-sized (body length in mm: male 35, female 45).
Type material: Holotype male, Sri Lanka: Trincomalee, MHNG;
Synonym: *T. septentrionum*: Type 2 females, India-NE: Assam, depository unknown;
Synonym: *T. taprobanarum*: Type 2 females, Sri Lanka, depository unknown;
Synonym: *T. assimolata*: Type female, locality unknown, depository unknown.
Distribution: India, Myanmar, Nepal, Sri Lanka.
Records: **ZSM:** Nepal: Rapti Tal, Monahari Khola, Belwa 350 m, leg. W.Dierl, W.Forster & W.Schacht, 05.V.1967 (male).

Humbertiella indica Saussure, 1869 Fig. 39, 40

Humbertiella indica Saussure, 1869: 62.
= *Humbertiella indica*. In: CHOPARD 1924: 175 (male) (Barkuda Island).
= *Humbertiella africana* Rehn, 1912: 106-108.
= *Humbertiella africana*. In: GIGLIO-TOS 1927: 66.
= *Humbertiella africana* Rehn, 1912 (synonymized by BEIER 1935: 7).

Size: Medium-sized (body length in mm: male 27, female 35).
Type material: Holotype female, India, MHNG;
Synonym: *H. africana*: Holotype female, Cameroon, ANSP (not in the SDEI).
Distribution: India: Myanmar, Nepal, Sri Lanka.
Records: **SMNK:** Nepal: Annapurna Region, Pokhara, Phewa Lake, 800 m NN, leg. A. Weigel, 10.X.1992 (female #12589) (ex coll. NME).

Humbertiella similis Giglio-Tos, 1917 Fig. 41, 42

Humbertiella similis Giglio-Tos, 1917: 83-84.
= *Humbertiella similis*. In: GIGLIO-TOS 1927: 65-66.

Size: Medium-sized (body length in mm: male 26, female 30).
Type material: Holotype male (#649), Nepal, ZMHB, Allo-type female, Sri Lanka-N, ZMHB.
Distribution: India, Nepal, Sri Lanka.

Iris Saussure, 1869

Iris Saussure, 1869: 56, 64-65.

Type generis: *Gryllus* (*Mantis*) *oratorius* Linné, 1758: 426 (#6) (sex ?) (Africa).

Iris orientalis Wood-Mason, 1882 Fig. 43, 44

Iris orientalis Wood-Mason, 1882: 32-33 (male and female) (NW-Himalaya: Kulu Valley, Kangra).
= *Iris orientalis*. In: UVAROV 1931: 237, 238 (India).
= *Iris orientalis*. In: BEIER 1935: 107 (India).
= *Iris orientalis*. In: BEIER 1962: 112 (Afghanistan, NW-Himalaya Kangra, Pakistan).
= *Iris orientalis*. In: MUKHERJEE, HAZRA & BALDERSON 1992: 68 (NW-Himalaya: Kulu Valley, Kangra, type catalog).
= *Iris orientalis*. In: MUKHERJEE et al. 1995: 286-287 (male and female), fig. 109-110 (male) (India, Java ?).
= *Iris orientalis*. In: MONDAL & SHISHODIA 1997: 200 (male) (India).
= *Iris orientalis*. In: KOBLIK Ye. A. et al. 2000: 12 (Nepal: Himalaya).
= *Iris orientalis*. In: EHRMANN 2002: 195 (male and female) (Afghanistan, India, Java ?, Nepal, Pakistan).
= *Iris orientalis*. In: MUKHERJEE, DAS & HAZRA 2005: 146 (NW-Himalaya: Kulu, Kangra, type catalog).
= *Iris orientalis*. In: OTTE & SPEARMAN 2005: 338 (female) (Nepal: Himalaya-NW, Kulu Valley, Kangra).
= *Iris orientalis*. In: VYJAYANDI 2007: 115, 152 (India).
= *Iris orientalis*. In: MUKHERJEE, EHRMANN & CHATTERJEE 2014: 17 (male and female) (India, Nepal, Pakistan).

Size: Medium-sized (body length in mm: male 30-40, female 39-42).

Type material: Lectotype male (#6508/1), Paralectotype male and female, NW-Himalaya: Kulu Valley, Kangra, NZSI; Lectotypes 2 females, India, OUMNH.

Distribution: Afghanistan, India, Nepal, Pakistan.

Records: **SMNK:** Nepal: Betrāwati, 27.58N-85.11E, am Fluß, 1600 m, leg. G.Lebisch & H.Probst, 07.-29.VI.1988 (male #04723 and female #04724).

Remarks: Wood-Mason (1882) indicates "Kulu Valley, Kangra, in the N.-W. Himalayans" as locality. The authors point out that today Kullu (=Kulu), [Kullu city centre (31°57'28.82"N - 77°06'34.11"E, 1231 m.a.s.l.)] and Kangra, [Kangra city centre (32°06'04.91"N - 76°16'22.65"E, 710 m.a.s.l.)] are two distinct cities in the Indian state of Himachal Pradesh, at the southern foothills of the north-western Himalayas. Kullu is situated about 80 km south-east of Kangra and both cities are located about 480 km and 395 km, respectively, north-west of the Nepalese border

Leptomantella Uvarov, 1940

Leptomantella nom. nov. Uvarov, 1940: 176.
= *Leptomantis* Giglio-Tos, 1915b: 87-88.
= *Leptomantis* Giglio-Tos, 1915. In: GIGLIO-TOS 1927: 306-307.
= *Leptomantis* (*Leptomantis*). In: BEIER 1935: 16-17 (new subgenus).
= *Leptomantis* Giglio-Tos, 1915. In: MUKHERJEE & HAZRA 1993: 483.
= *Leptomantis* Giglio-Tos, 1915. In: MUKHERJEE, HAZRA & GHOSH 1995: 199, 246.

Type generis: *Mantis* (*Thespis*) *albella* Burmeister, 1838: 533 (#7.15) (sex ?) (Java).

Leptomantella indica (Giglio-Tos, 1915) Fig. 45

Leptomantis indica Giglio-Tos, 1915b: 88-89.
= *Leptomantis indica*. In: GIGLIO-TOS 1927: 308.
= *Leptomantis* (*Leptomantis*) *indica*. In: BEIER 1935: 17.
= *Leptomantis indica*. In: CHOPARD & DREUX 1966: 603 (female) (Dankuta).
= *Leptomantella* (*Leptomantella*) *indica*. In: EHRMANN 2002: 200-201.
= *Leptomantella indica*. In: MUKHERJEE, EHRMANN & CHATTERJEE 2014: 21-22.

= *Leptomantis ceylonica* Beier, 1956: 36 (female) (Sri Lanka) (synonym ?).

Size: Medium-sized (body length in mm: male 30-35, female 34).

Type material: Holotype male, Allotype female, India-NE: Sikkim, MIZT, Syntype male, India-NE: Darjeeling, BMNH.

Distribution: India, Nepal.

Records: DBUC ?: Nepal: Kathmandu Vally Godavari, 1800 m, leg. W.Dierl & W.Schacht, 01.-07.VI.1967 (male); **NMB:** Nepal: Phulchoki, 2600 m, leg. W.Wittmer & C.Baroni Urbani, 11.-14.VI.1976 (#546, female); **SMNK:** Nepal: Sāngutār, 27.21N-86.12E, am Fluß, 1550 m, leg. G.Lebisch & H.Probst, 07.-29.VI.1988 (female #04812); **ZSM:** Nepal: Prov. Chisapani, Chisapani Garhi, 1600 m, leg. Dierl & Schacht, 11.-15.VII.1967 (male); Nepal: Kathmandu Vally Godavari, 1800 m, leg. W.Dierl & W.Schacht, 01.-07.VI.1967 (3 males).

Mantis Linné, 1758

Gryllus (*Mantis*) Linné, 1758: 425.

= *Mantes* Geoffroy, 1762: 399 (err. descr.).

Type generis: *Gryllus* (*Mantis*) *religiosus* Linné, 1758: 426 (#5) (sex ?) (Africa).

Mantis religiosa religiosa Linné, 1758 Fig. 46

Gryllus (*Mantis*) *religiosus* Linné, 1758: 426 (#5) (sex ?) (Africa).

= *Gryllus religiosus* Linné, 1758. In: SCOPOLI 1763: 105, fig. 315 (female).

= *Gryllus religiosus* Linné. In: SEBA 1765, 4: 29, 75, pl. 67, fig. 1-2.

= *Gryllus religiosus* Linné. In: SEBA 1765, 4: 96-97, pl. 96, fig. 45 (female).

= *Mantis religiosa*. In: LINNÉ 1767: 690.

= *Mantis oratoria* Fabricius, 1775: 276-277.

= *Mantis sancta* Fabricius, 1787: 228.

= *Mantis sancta* Fabricius, 1787. In: OLIVIER 1792: 628-629.

= *Mantis religiosa* var. *striata* Fabricius, 1793: 20.

= *Mantis oratoria* Fabricius, 1775. In: LICHTENSTEIN 1802: 28-29.

= *Mantis maroccana* Thunberg, 1815: 287-299.

= *Mantis pia* Audinet-Serville, 1839: 193.

= *Mantis prasina* Audinet-Serville, 1839: 195.

= *Mantis radiata* Motchoulsky. In: FISCHER-WALDHEIM 1846: 101, pl. 2, fig. 3 (male).

= *Mantis capensis* Saussure, 1872a: 46-47.

= *Mantis capensis*. In: STAL 1877: 60-61.

= *Mantis religiosa* var. *major* Gerstaecker, 1873: 12.

= *Mantis prasina* Audinet-Serville, 1839. In: STAL 1877: 61.

= *Mantis pia* Audinet-Serville, 1839. In: KIRBY 1899: 348.

= *Mantis macroura*. In: BRUNNER DE WATTENWYL 1882: 60.

= *Mantis carinata* Cosmovici, 1888: 172-173.

= *Mantis religiosa* ab. *flava* Padewieth, 1900: 20.

= *Mantis religiosa* ab. *brunnea* Padewieth, 1900: 20.

= *Mantis religiosa religiosa*. In: ROY 1967: 126-149.

= *Mantis religiosa*. In: ANONYMOUS 1907: 24.

= *Mantis religiosa*. In: JOSHI & MANANDHAR 2001: 37.

= *Mantis religiosa religiosa*. In: EHRMANN 2002: 216.

= *Mantis religiosa religiosa*. In: EHRMANN 2011: 19-20.

= *Mantis religiosa religiosa*. In: BERG, SCHWARZ & MEHL 2011: 520 pp.

Size: Medium-sized to very-large (body length in mm: male 48-60, female 43-88).

Type material: Holotype male, Paratypes 3 female, Africa, LSUK.

Distribution: Africa, Asia, Europe, in America-N and Canada introduced (not in Australia, not in South America!).

Records: NME: Nepal: Lamjung, Annapurna around Besisahar, 800 m NN, LF, leg. M.Hartmann, 18.IX.1992 (male); **SMNK:** Nepal-S: Jhawani, 27.35N-84.30E, im Königl.-N.-P., leg. K.Hellmann, IX.1956 (male #05113); **ZSM:** Nepal: Balephi-Bazar, leg. G.Ebert & H.Falkner, 29.VI.1962 (male));

Nepal: Pokhara, 28°14'N-83°59'E, Leware, 1500 m, leg. F-Lobbichler, 16.IX.1955 (2 males); Nepal: Naula Puz, 1900 m, leg. G.Ebert & H.Falkner, 28.VI.1962 (juvenile).

Mantis religiosa inornata Werner, 1930 Fig. 47

= *Mantis inornata* Werner, 1930b: 689, pl. 1, fig. 1 (female).

= *Mantis religiosa inornata*. In: BAZYLUK 1960: 16 (15): 238, 243-246, 247, 251, 254, 259, 261-264, 266, 279, (fig. 52 (male), (fig. 4, 12, 24, 31, 39, 40 (female)).

= *Mantis religiosa inornata*. In: ROY 1967: 130.

= *Mantis inornata*. In: SURESHAN, GHATE & RADHAKRISHNAN 2004: 230-231 (male).

= *Mantis inornata*. In: SURESHAN, GHATE & RADHAKRISHNAN 2006: 230 (female).

= *Mantis religiosa inornata*. In: EHRMANN 2011: 20.

= *Mantis religiosa inornata*. In: BERG, SCHWARZ & MEHL 2011: 44, 48-54, 56, 57, 59, 60, 66, 67, 90, 105.

= *Mantis religiosa akbari* Soomro, Soomro & Wagan, 2001: 24-25 (**syn. nov.** Ehrmann & Borer).

= *Mantis religiosa akbari*. In: SOOMRO, SOOMRO & WAGAN 2002: 59.

Size: Medium-sized to large (body length in mm: male 43-63, female 79-80).

Type material: Holotype female, India: Dehra Dun, IFRI; Synonym: *M. r. akbari*: Holotype male, Dadu, Jamshoro, Allotype female, Hyderabad, Latifabad, Paratypes male and female, Jamshoro, all in: USINDH.

Distribution: India, Iran, Nepal, Pakistan.

Records: SMNK: Nepal: Prov. Bheri, Distr. Banke, Nepalguni Hotel Sneha, 28°02'41"N-81°37'17"E, 140 m NN, LF, leg. M.Hartmann, 14.-15.VI.2007 (male #12590) (ex coll. NME); **NMB:** Nepal-E: Mechi, Dobhan, 700 m, leg. M.Brancucci, 05.-06.VI.1985 (male).

Remarks: The authors state that SOOMRO et al. (2002) were not aware of the species *Mantis inornata* described by WERNER (1930) and synonymize *Mantis religiosa akbari* Soomro et al., 2001 with *Mantis religiosa inornata* WERNER, 1930.

Memantis Giglio-Tos, 1915

Memantis Giglio-Tos, 1915c: 163.

Type generis: *Mantis fuliginosa* Thunberg, 1815: 291-292 (female) (India).

Memantis anomala Lombardo, 1993 Fig. 48

Memantis anomala Lombardo, 1993: 204-205, fig. 11a-11b, 12a-12d.

Size: Small (body length in mm: male 20, female 24).

Type material: Holotype male and Paratypes 9 males, Nepal: Rapti-Tal, Monahari Khola, Belwa 350 m, leg. W.Dierl, W.Forster & W.Schacht, 06.-12.V.1967, ZSM, Paratype male, same data, DBUC ?.

Distribution: Nepal.

Records: SMNK: Nepal: P: Seti, D: Bajhang, way Sagu Bagar, 29°34'44"N-81°13'44"E, to before Talkot, 29°36'17"N-81°17'54"E, 1300-1400 m NN, leg. A.Weigel, 15.VI.2009, (female #12464) (ex coll. NME).

Memantis fuliginosa (Thunberg, 1815) Fig. 49, 50

= *Mantis fuliginosa* Thunberg, 1815: 291-292 (female) (India).

= *Gonypeta femorata* Saussure, 1870: 230 (female) (Arabia ?).

= *Gonypeta femorata*. In: SAUSSURE 1871a: 58-59 (female) (Arabia ?, India ?).

= *Gonypeta fuliginosa*. In: WOOD-MASON 1891: pl. 2, fig. 6, 6a, 6b (female).

= *Gonypeta fuliginosa*. In: KIRBY 1904b: 224 (Sri Lanka).

- = *Memantis fuliginosa*. In: GIGLIO-TOS 1915c: 163.
- = *Memantis fuliginosa*. In: GIGLIO-TOS 1927: 179 (male and female).
- = *Humbertiella consobrina* Saussure, 1871b: 273-274 (male).
- = *Elaea consobrina*. In: KIRBY 1904b: 214 (India, Singapore).

Size: Small (body length in mm: male 20-22, female 22).

Type material: Holotype female, India-E, ZIN;

Synonym: *G. femorata*: Holotype female, "Arabia ?", depository unknown;

Synonym: *H. consobrina*: Type male, India oriental (coll. Brunner de Wattenwyl), NHMW.

Distribution: Arabia ?, India, Myanmar, Nepal, Singapore ?, Sri Lanka ?.

Records: **NHMW:** India-SW: Prov. Kerala: Mahé, [11°42'N-75°32'E] (male, female and juvenile) (ex coll. Brunner de Wattenwyl); **SMNK:** Nepal: Distr. Tanhu, Marsyandi, 530 m, Turture, Hauswand, (Nr.124), leg. J.Martens & J.Ausobsky, 07.IV.1980, (female #05721); **ZSM:** Nepal: Bhimpedi, 400 m, leg. G.Ebert & H.Falkner, 04.-07.IV.1962 (male) [det. Max Beier].

Memantis gardeneri Werner, 1931

Memantis gardeneri Werner, 1931: 1331.

= *Memantis gardeneri*. In: EHRMANN 2002: 219 (male).

Size: Small (body length in mm: male 21, female 24).

Type material: Syntype male, Tarakhet, BMNH, Syntype male, Tarakhet, IFRI.

Distribution: Nepal-W: Tarakhet, 28°23'5.3"N-83°27'55.2"E, 1178 m, NW Kathmandu.

Mesopteryx Saussure, 1870

Mesopteryx Saussure, 1870: 235.

Type generis: *Mesopteryx alata* Saussure, 1870: 235 (female) (Philippines).

Mesopteryx platycephala (Stål, 1877) Fig. 51

= *Tenodera platycephala* Stål, 1877: 56.

= *Mesopteryx platycephala*. In: GIGLIO-TOS 1927: 420.

Size: Very-large (body length in mm: male 89-103, female 110-113).

Type material: Holotype female, India-N, NHRS.

Distribution: India-NE, Cambodia, Myanmar, Nepal.

Records: **SMNK:** Nepal: Gongrāli, 28.42N-82.41E, 1300 m, lux, (Gen.-Prep.Schwarz, #057), leg. G.Lebisch & H.Probst, 07.-29.VI.1988 (male #05723).

Rhombodera Burmeister, 1838

Mantis (*Rhombodera*) Burmeister, 1838: 536.

Type generis: *Mantis* (*Rhombodera*) *valida* Burmeister, 1838: 536 (#7.28) (sex ?) (Java).

Rhombodera tectiformis Saussure, 1870 Fig. 52

Hierodula (*Rhombodera*) *tectiformis* Saussure, 1870: 232-233.

= *Rhombodera tectiformis*. In: BRUNNER DE WATTENWYL 1893: 69-70.

= *Hierodula* (*Rhombodera*) *tectiformis*. In: GIGLIO-TOS 1927: 453.

= *Hierodula* (*Rhombodera*) *tectiformis*. In: BEIER 1935: 86.

= *Rhombodera tectiformis*. In: BEESON 1941: 727.

= *Rhombodera tectiformis*. In: CHOPARD & DREUX 1966: 603 (female) (Dankuta).

= *Rhombodera tectiformis*. In: LOMBARDO 1993: 193, 201-202, fig. 6c, 7c, 8c, 9c (male).

= *Hierodula* (*Rhombodera*) *tectiformis*. In: MUKHERJEE, HAZRA & GHOSH 1995: 201, 299.

= *Rhombodera tectiformis*. In: NAEEM & YOUSUF 1996: 284 (Pakistan).

= *Rhombodera tectiformis*. In: EHRMANN 2002: 309.

= *Hierodula* (*Rhombodera*) *tectiformis*. In: VYJAYANDI 2007: 91.

= *Rhombodera tectiformis*. In: MUKHERJEE, EHRMANN & CHATTERJEE 2014: 35-36.

= *Rhombodera doriana* Laidlaw, 1931: 88-90 (male), pl. 4, fig. 1-4 (synonymized in MUKHERJEE et al. 2014: 3, 35-36).

= *Hierodula* (*Rhombodera*) *doriana*. In: BEIER 1935: 86.

= *Rhombodera doriana*. In: MARSHALL 1975: 314 (male).

= *Hierodula* (*Rhombodera*) *doriana*. In: MUKHERJEE, HAZRA & GHOSH 1995: 201, 298.

= *Rhombodera doriana*. In: EHRMANN 2002: 307.

= *Rhombodera doriana*. In: OTTE & SPEARMAN 2005: 267.

= *Hierodula* (*Rhombodera*) *doriana*. In: VYJAYANDI 2007: 91.

= *Rhombodera doriana*. In: GHATE, JADHAV, SURESHAN & SHARMA 2012: 21.

Size: Large (body length in mm: male 68, female 80).

Type material: Type female, India: Bombay, MNHN;

Synonym: *Rh. doriana*: Holotype male, India: Bihar, Ranchi, BMNH (err. descr. Holotype female).

Distribution: India, Myanmar, Nepal, Pakistan.

Records: **MNHN:** Nepal-E: Exp. Jannu, Nepal oriental, Dreux, IV.-V.1959 (female); **NMB:** Nepal: Gandaki, Gorkha, Lapubesi, 28°10'42"N-84°52'43"E, 810 m, leg. E.Sprecher, 09.V.2013 (male); **SMNK:** Nepal: Kāndrāng Garhi, 27.42N-84.47E, 1200 m, leg. G.Lebisch & H.Probst, 07.-29.VI.1988 (female #08221); Nepal: Banepa, 27.38N-85.31E, im Kathmandu Tal, 25 km SE Kathmandu, leg. U.Sellenschlo, XI.1986 (ootheca #08222); **ZSM:** Nepal: Rapti Tal, Monahari, Kholā, Belwa 350 m, leg. W.Dierl, W.Forster & W.Schacht, 05.-07.V.1967 (male and female).

Rhombomantis gen. nov.

Type generis: *Hierodula* (*Rhombodera*) *butleri* Wood-Mason, 1878b: 580-581 (male and female), pl. 36, fig. 3, 3a-3b (female) (India).

Remarks: Dr. Alfred Peter Kaltenbach† (1920-2005), formerly working at the NHMW, described in an unfinished manuscript with the title „Beiträge zur Kenntnis der Mantodea-Fauna von Thailand“ a new subgenus, *Rhombomantis* subgen. nov. Kaltenbach† 2005.

Diagnosis

Kaltenbachs citation is:

„Die von LOMBARDO 1992, unter *Rhombodera* beschriebene Art *fuscus* bildet mit *Rhombodera butleri* WOOD-MASON, 1878, und *Rh. woodmasoni* WERNER, 1931, eine Gruppe nahe verwandter Arten, die durch die charakteristische Form des Pronotum ausgezeichnet sind. Die drei Arten weisen eine gewisse Ähnlichkeit mit der Gattung *Rhombodera* auf, stehen aber doch *Hierodula* näher. Die Aufstellung eines neuen Subgenus erscheint daher gerechtfertigt.“

The authors agree with the opinion of Kaltenbach that the three above-mentioned species differ from the rest of the *Rhombodera* species in the shape of their pronotum.

The shape of the pronotum being dissimilar from those of the genus *Hierodula*, the authors transfer the three species

(*Rhombodera fusca*, *Rhombodera butleri* and *Rhombodera woodmasoni*) in a new genus and adopt the name „*Rhombomantis*“, suggested by Kaltenbach.

In the systematic classification, *Rhombomantis* **gen. nov.** should be placed between the genus *Hierodula* and *Rhombodera* and includes the following three species: *Rhombomantis fusca* (C-I, C-III), *Rhombomantis butleri* (C-II) and *Rhombomantis woodmasoni* (C-IV). *Hierodula brachynota* Wang & Dong, 1993 (C-I) has to be considered as a **syn. nov.** of *Rhombomantis fusca* (Lombardo, 1992).

Description:

The pronotum of *Rhombomantis* is short, elongated to rhomboid (never round) and, lateral, with a narrow lamellar extension (Fig. C). The latter extends from the metazona to the basis of the pronotum.

The spination pattern of the raptorial legs, consisting of the coxa, the femur (4 discoidal spines and 4 postero-ventral spines) and the tibia (9-11 postero-ventral spines), is not significantly different between the genera *Hierodula*, *Rhombodera* and *Rhombomantis*. This anatomical feature can therefore not be used to distinguish the three genera from each other.

The hypophallus in the four above-mentioned species (*Hierodula brachynota* **syn. nov.** of *Rhombomantis fusca* (D-I), *Rhombomantis butleri* (D-II), *Rhombomantis fusca* (D-III) and *Rhombomantis woodmasoni* (D-IV)) is structurally very similar, and is barely comparable to those of the genera *Hierodula* and *Rhombodera*.

The genera *Hierodula* Burmeister, 1838 and *Rhombodera* Burmeister, 1838 can be distinguished by the shape of their pronotum. The latter is divided by the supracoxal dilatation into an upper and lower part, the prozona and the metazona, respectively.

In the genus *Hierodula* (B-I), the supracoxal dilatation of the pronotum has no significant lamellar extension and is clearly visible due to the distinct cranial and caudal narrowing of the prozona and the metazona, respectively.

In the genus *Rhombodera* (B-II, III), the supracoxal dilatation of the pronotum exhibits a significant lamellar extension of the prozona and the metazona and is therefore not as pronounced as in the genus *Hierodula*. The lamellar extension stretches from the metazona to the basis of the pronotum. The shape of the pronotum can be elongated (B-II) or round (B-III).

However, to ensure the distinction between the genera *Hierodula*, *Rhombodera* and *Rhombomantis* a revisional work based on morphological investigation, combined with molecular analysis is needed.

Rhombomantis butleri (W.-Mason, 1878) **comb. nov.** Fig. 53

Hierodula (Rhombodera) butleri Wood-Mason, 1878b: 580-581 (male and female), pl. 36, fig. 3, 3a-3b (female).

= *Rhombodera butleri*. In: WESTWOOD 1889: 11, 27, 33.

= *Rhombodera butleri*. In: KIRBY 1904b: 248.

= *Hierodula (Rhombodera) butleri*. In: GIGLIO-TOS 1912b: 107.

= *Hierodula (Rhombodera) butleri*. In: GIGLIO-TOS 1927: 438, 453-454.

= *Rhombodera butleri*. In: WERNER 1931: 1331-1332 (female).

= *Hierodula (Rhombodera) butleri*. In: BEIER 1935: 86.

= *Rhombodera butleri*. In: RAMSAY 1990: 41.

= *Rhombodera butleri*. In: LOMBARDO 1992: 100, fig. 7 (male).

= *Rhombodera butleri*. In: LOMBARDO 1993: 200-202, fig. 6b, 7b, 8b, 9b (male) (err. descr. *buthleri*).

= *Hierodula (Rhombodera) butleri*. In: MUKHERJEE & HAZRA 1993: 490, 503, 508.

= *Hierodula (Rhombodera) butleri*. In: MUKHERJEE, HAZRA & GHOSH 1995: 201, 296, 297.

= *Hierodula (Rhombodera) butleri*. In: CHATURVEDI & HEGDE 2000: 296.

= *Rhombodera butleri*. In: EHRMANN 2002: 306-307.

= *Hierodula (Rhombodera) butleri*. In: GHATE & RANADE 2002: 351.

= *Rhombodera butleri*. In: OTTE & SPEARMAN 2005: 267.

= *Rhombodera butleri*. In: VYJAYANDI 2007: 91.

= *Rhombodera butleri*. In: KOÇAK & KEMAL 2008: 46 (#2498).

= *Rhombodera butleri*. In: MUKHERJEE, EHRMANN & CHATTERJEE 2014: 40.

Size: Large to very-large (body length in mm: male 70-80, female 72-82).

Type material: Holotype male, Allotype female, India-NE: Assam, Naga Hills, near Samaguting, NZSI ?.

Distribution: India, Nepal.

Records: **DBUC ?:** Nepal: Rapti Tal Monahari Khola, Belwa 350 m, leg. W.Dierl, W.Forster & W.Schacht, 11.V.1967 (male); **SMNK:** Nepal: Rapti Tal, Monahari, Khola, Belwa 350 m, leg. Dierl, Forster, Schacht, 12.V.1967 (male #08004); **ZSM:** *Rhombodera butleri*: Nepal: Rapti Tal, Monahari, Khola, Belwa 350 m, leg. W.Dierl, W.Forster & W.Schacht, 11.V.1967 (male).

Rhombomantis fusca (Lombardo, 1992) **comb. nov.**

(not in Nepal) Fig. 54

Rhombodera fusca Lombardo, 1992: 97-100, fig. male 1, 5, 6, female 2, 3, 4.

= *Rhombodera fusca*. In: EHRMANN 2002: 307.

= *Rhombodera fusca*. In: OTTE & SPEARMAN 2005: 268.

= *Rhombodera fusca*. In: KOÇAK & KEMAL 2008: 46 (#2505).

= *Hierodula brachynota* Wang & Dong, 1993: 205, 207, fig. 3 (female) (**syn. nov. Ehrmann & Borer**)

= *Rhombodera brachynota*. In: EHRMANN 2002: 306.

= *Rhombodera brachynota*. In: OTTE & SPEARMAN 2005: 267.

= *Hierodula brachynota*. In: KOÇAK & KEMAL 2008: 46 (#2500).

= *Hierodula brachynota*. In: ZHU XIAO-YU. et al. 2012: 246, 2 fig. (female).

Size: Large (body length in mm: male 50-55, female 60-65).

Type material: Holotype male, Allotype female, Thailand-N: Prov. Chiang Mai-Samoeng, Maetaeng, DBUC;

Synonym: *H. brachynota*: Holotype female, China-SW: Prov. Yunnan, Lincang, IEAS.

Distribution: China, Laos, Malaysia, Myanmar, Thailand.

Records: **MNHN:** Vietnam: breeding, A.Bauduin & C. Bauduin, 2007 (male, female and 2 oothecae); **SMNK:** Thailand-NW: Prov. Chiang Mai, Chiang Mai, 18.47N-98.59E, leg.

C.Mignard, 18.X.1998 (male #08207); Thailand-W: Prov. Tak, Larn Sang, 16.45N-99.0E, dry evergreen forest with bamboo;

night collecting, (Nr.56), leg. S.Ingrisch, 14.IV.1994 (female #08208); Laos-S: Plateau des Bolovens, 5 km W von Ban Nongmek, 15.09N-105.55E, 20 km E Pakse, 520 m, leg.

S.Löffler, 01.-12.V.2003 (female #08209); Myanmar-SE: Prov. Kawthule, Dawna Range (Kokarit Mt. 2000 m), 16.50N-98.15E, leg. H.Lehmann, IV.1990 (female #08210); **ZSM:**

Thailand-NW: Prov. Chiang Mai, 18.47N-98.59E, Umgeb. Doi Pui, leg. H.Lehmann, III.1987 (male and female).

Remarks: WANG & DONG (1993) described the species *brachynota* from Yunnan, China, and classified it in the genus *Hierodula*. With the aid of Dr. Chao Wu (Chinese Academy of Science, Institute of Zoology, Beijing, China = IZCAS), the authors examined *Hierodula brachynota* and realised the equality with *Rhombomantis fusca*. Consequently, *Hierodula brachynota* = *Rhombomantis fusca* **syn. nov.**

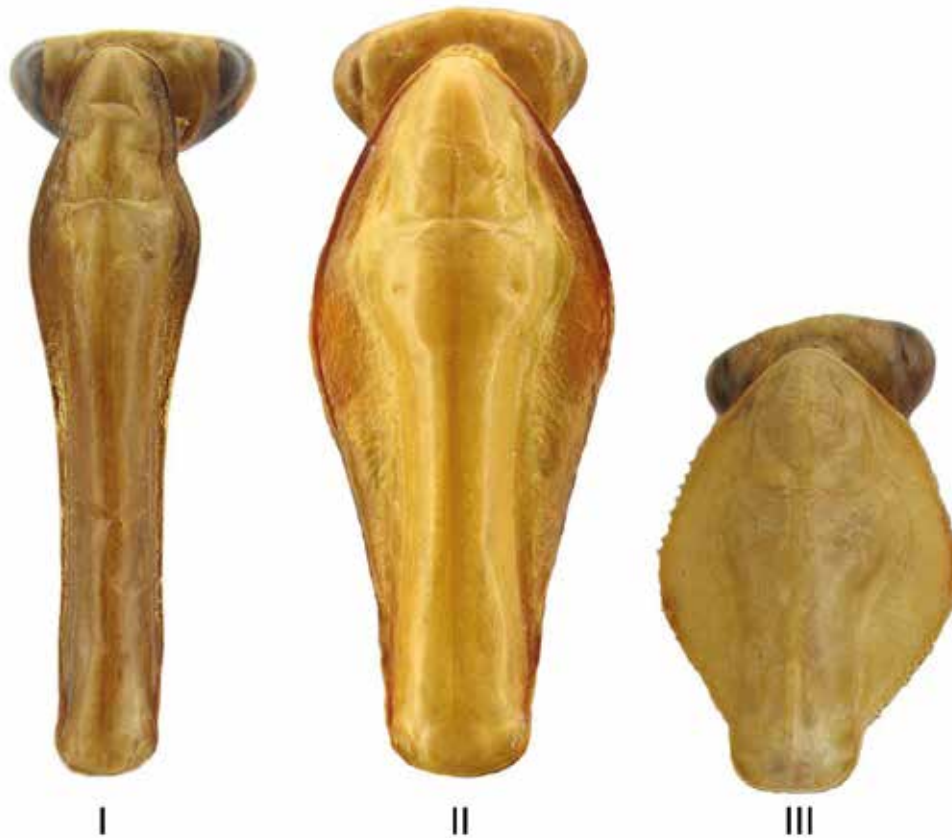


Figure B: Male pronota with indication of length, dorsal view: I) *Hierodula membranacea* (28 mm) (NMB), II) *Rhombodera fraticida* (28 mm) (SMNK), III) *Rhombodera tectiformis* (19 mm) (NMB). Photos by R. Ehrmann.

***Rhombomantis woodmasoni* (Werner, 1931) comb. nov.** Fig. 55

- = *Hierodula* (*Rhombodera*) *woodmasoni* Werner, 1931: 1331-1332, pl. 1, 2 fig. (female).
- = *Hierodula* (*Rhombodera*) *woodmasoni*. In: BEIER 1935: 86.
- = *Rhombodera woodmasoni*. In: NADKERNY 1965: 78.
- = *Hierodula woodmasoni*. In: MARSHALL 1975: 327.
- = *Rhombodera woodmasoni*. In: LOMBARDO 1993: 199-201, fig. 6a, 7a, 8a, 9a (male).
- = *Hierodula* (*Rhombodera*) *woodmasoni*. In: MUKHERJEE, HAZRA & GHOSH 1995: 201, 296, 299.
- = *Rhombodera woodmasoni*. In: EHRMANN 2002: 309.
- = *Rhombodera woodmasoni*. In: OTTE & SPEARMAN 2005: 270.
- = *Hierodula* (*Rhombodera*) *woodmasoni*. In: GHATE & RANADE 2002: 350.
- = *Rhombodera woodmasoni*. In: VYJAYANDI 2007: 91-94, fig. 156-161, pl. IX, fig. 20 (female).
- = *Rhombodera woodmasoni*. In: KOÇAK & KEMAL 2008: 46 (#2527).
- = *Rhombodera woodmasoni*. In: MUKHERJEE, EHRMANN & CHATTERJEE 2014: 42.
- = *Hierodula heterodera* Westwood, 1889: 12, 27, 34 (male) (synonymized in MUKHERJEE et al. 2014: 4, 32, 36).

Size: Large (body length in mm: male 67, female 71).

Type material: Holotype female, India-E: Madras, Nilambur, Arevacode, BMNH;

Synonym: *H. heterodera*: Type male (#Orth: 483), India: Bengal, OUMNH [not a synonym of *Hierodula tenuidentata* Saussure, 1869].

Distribution: India, Nepal, Malaysia.

Records: **DBUC ?:** Nepal: Rapti Tal, Monahari, Khola, Belwa 350 m, leg. W.Dierl, W.Forster & W.Schacht, 06.-10.V.1967 (male and female) [*Rhombodera woodmasoni*]; **SMNK:** Nepal: Bahainse Dobhān, 27.29N-85.03E, 1250 m, lux, leg. G.Lebisch & H.Probst, 07.-29.VI.1988 (male #08223); Nepal: Mahādevtār, 27.35N-84.42E, 1300 m, leg. G.Lebisch & H.Probst, 07.-29.VI.1988 (female #08224); **ZSM:** Nepal: Rapti Tal, Monahari, Khola, Belwa 350 m, leg. W.Dierl, W.Forster & W.Schacht, 06.-10.V.1967 (male and 2 females) [*Rhombodera woodmasoni*].

***Sceptuchus* Hebard, 1920**

- Sceptuchus* Hebard, 1920: 27-28.
- = *Septuchus* (err. descr.). In: TINKHAM 1937a: 489, pl. 16, fig. 6 (male), fig. 7 (female).

Type generis: *Sceptuchus simplex* Hebard, 1920: 28-29 (male), pl. 1, fig. 5-6 (male) (Singapore).

***Sceptuchus baehri* Lombardo, 1993** Fig. 56

- Sceptuchus baehri* Lombardo, 1993: 195-196, fig. 2a-2c.
- = *Sceptuchus baehri*. In: EHRMANN 2002: 315.
- = *Sceptuchus baehri*. In: OTTE & SPEARMAN 2005: 119.

Size: Small (body length in mm: male 18, female unknown).

Type material: Holotype male, Nepal: Rapti Tal Jhawani 200 m, leg. W.Dierl, W.Forster & W.Schacht, 16.V.1967, ZSM, Paratype male, Nepal: Rapti Tal, Monahari Khola, Belwa 350 m, leg. W.Dierl, W.Forster & W.Schacht, 13.V.1967, DBUC.

***Schizocephala* Audinet-Serville, 1831**

Schizocephala Audinet-Serville, 1831: 55.

Type generis: *Gryllus* (*Mantis*) *bicornis* Linné, 1758: 426 (#8) (female) (India).

***Schizocephala bicornis* (Linné, 1758)** Fig. 57

- Gryllus* (*Mantis*) *bicornis* Linné, 1758: 426 (#8) (female) (India).
- = *Gryllus* (*Mantis*) *bicornis*. In: LINNÉ 1764: 116.
- = *Mantis bicornis*. In: LINNÉ 1767: 691.
- = *Mantis bicornis*. In: GMELIN-LINNÉ 1790: 2053.
- = *Schizocephala bicornis*. In: BEIER 1935: 71.
- = *Mantis oculata* Fabricius, 1781: 348.

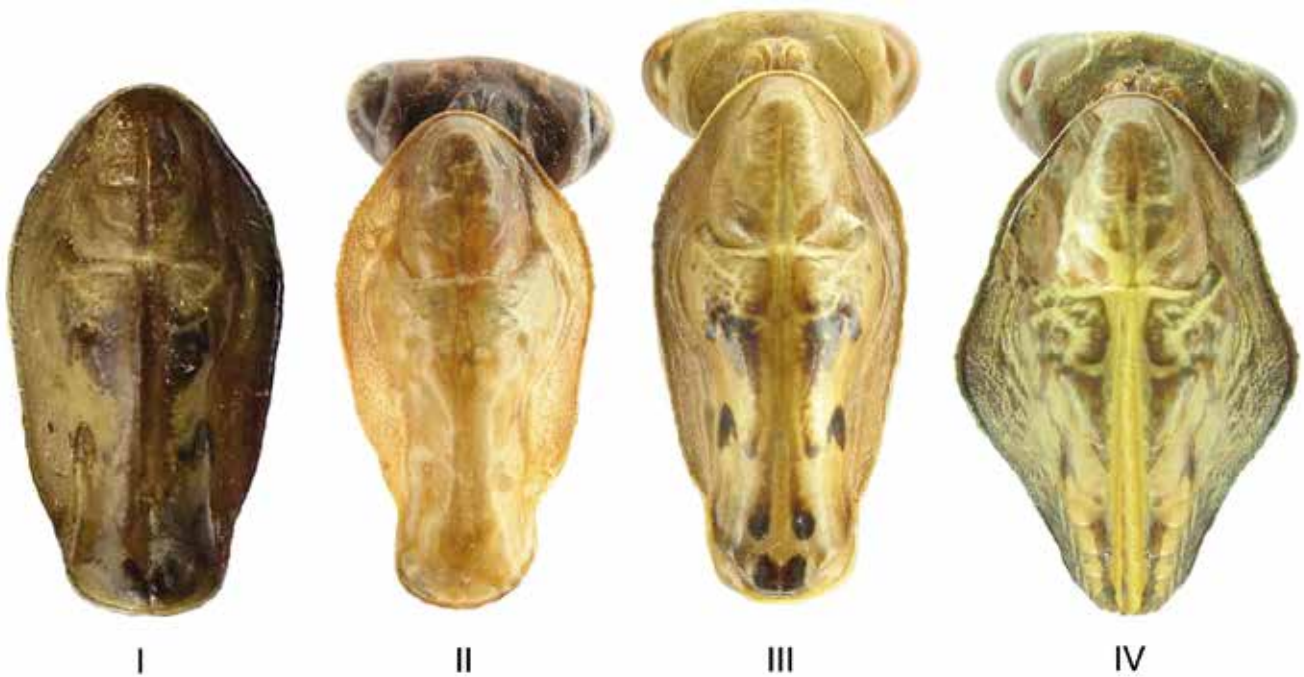


Figure C: Male pronota with indication of length, dorsal view: I) *Hierodula brachynota* syn. nov. of *Rhombomantis fusca* (16 mm) (IZCAS), II) *Rhombomantis butleri* (15,3 mm) (SMNK #08004), III) *Rhombomantis fusca* (15,9 mm) (SMNK #08207) and IV) *Rhombomantis woodmasoni* (15,8 mm) (SMNK #08223). Photos by R. Ehrmann.

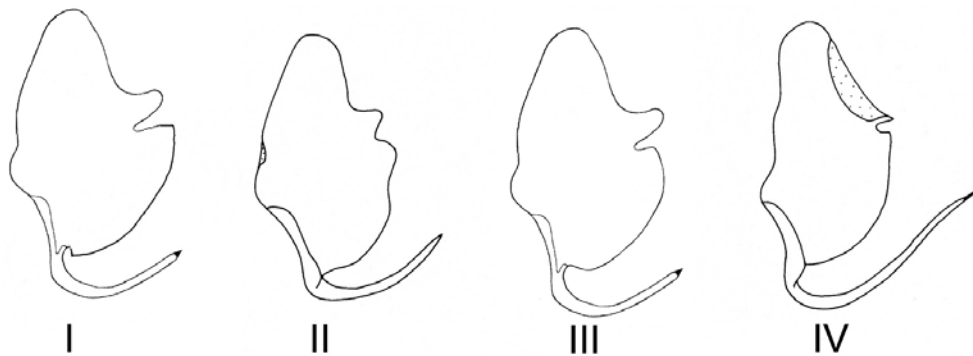


Figure D: Hypophallus ventral: I) *Hierodula brachynota* syn. nov. of *Rhombomantis fusca*; II) *Rhombomantis butleri*; III) *Rhombomantis fusca*; IV) *Rhombomantis woodmasoni*. Illustrations adapted from Dr. CHAO WU (I), LOMBARDO 1992 (III) and LOMBARDO 1993 (I, II, III and IV).

- = *Mantis oculata*. In: FABRICIUS 1787: 228.
- = *Mantis oculata*. In: STOLL 1787: 32-33, 43, pl. 10, fig. 38 (male), pl. 13, fig. 53 (male).
- = *Mantis oculata*. In: OLIVIER 1792: 632.
- = *Mantis oculata*. In: FABRICIUS 1793: 19.
- = *Mantis oculata*. In: LICHTENSTEIN 1802: 20.
- = *Schizocephala oculata*. In: BURMEISTER 1838: 552.
- = *Mantis (Schizocephala) oculata*. In: BLANCHARD 1840: 13.
- = *Mantis (Schizocephala) oculata*. In: BLANCHARD 1845: 226-227.
- = *Mantis (Schizocephala) oculata*. In: BLANCHARD 1850: 13.
- = *Mantis stricta* Olivier, 1792: 641, (#12) (India: Tamil Nadu).
- = *Mantis stricta*. In: STOLL 1787: 33, pl. 10, fig. 38 (male).
- = *Schizocephala stricta*. In: AUDINET-SERVILLE 1831: 56.

& H.Falkner], 13.VI.1964 (female); Nepal: Indrawati Khola Saretar, 1700 m, leg. G.Ebert & H.Falkner, 26.IV.1962 (juvenile); Nepal: Naula Puz, 1900 m, leg. G.Ebert & H.Falkner, 28.VI.1962 (2 juveniles).

***Statilia* Stål, 1877**

Statilia Stål, 1877: 36, 55.

Type generis: *Pseudomantis nemoralis* Saussure, 1870: 228-229 (female) (Philippines).

Size: Very-large (body length in mm: male 80-100, female 116-127).

Type material: Holotype female, India, UZIU;

Synonym: *M. oculata*: Holotype male, Africa ?, BMNH;

Synonym: *M. stricta*: Type male, India: Tamil Nadu, Tranquebar, depository unknown.

Distribution: India, Nepal, Sri Lanka, Sunda Island.

Records: **SMNK:** Nepal: Bālāju, 27.44N-85.17E, am Fluß, 1650 m, leg. G.Lebisch & H.Probst, 07.-29.VI.1988 (male #08469); **ZSM:** Nepal: Katakoti, 2100 m, (#127) [G.Ebert

***Statilia maculata* (Thunberg, 1784) Fig. 58**

Mantis maculata Thunberg, 1784: 61-62.

= *Mantis maculata*. In: OLIVIER 1792: 634.

= *Mantis maculata*. In: THUNBERG 1815: 291.

= *Mantis (Mantis) maculata*. In: DE HAAN 1842: 77, pl. 18, fig. 5 (female).

= *Pseudomantis maculata*. In: SAUSSURE 1871a: 37.

= *Statilia maculata maculata*. In: BEIER 1935: 92.

= *Statilia maculata*. In: JOSHI & MANANDHAR 2001: 37.

= *Statilia maculata*. In: INGRISCH 1987: 32.

= *Pseudomantis haanii* Saussure, 1871b: 37, 276-277 (synonymized by Giglio-Tos 1927: 410-411).

= *Pseudomantis haanii*. In: SAUSSURE 1872a: 24-25.

- = *Pseudomantis haanii*. In: WESTWOOD 1889: 13.
- = *Pseudomantis haanii*. In: BRUNNER DE WATTENWYL 1893: 66.
- = *Statilia haanii*. In: GIGLIO-TOS 1912: 6-8.
- = *Statilia maculata* var. *hyalina* Giglio-Tos, 1927: 410-411 (synonymized by EHRMANN 2002: 333-334).
- = *Statilia maculata* var. *hyalina*. In: BEIER 1935: 92.
- = *Statilia maculata* var. *hyalina*. In: EHRMANN 2002: 334.
- = *Statilia haani* var. *major* Werner, 1922b: 154 (Philippines) (synonymized by BEIER 1935: 92).
- = *Statilia maculata continentalis* Werner, 1935: 495-496 (synonymized in MUKHERJEE et al. 2014: 3, 38).
- = *Statilia maculata continentalis*. In: EHRMANN 2002: 334.

Size: Medium-sized to large (body length in mm: male 38-62, female 39-57).

Type material: Holotype male, Japan, UZIU;
 Synonym: *P. haanii*: Syntypes 2 males, Java, MHNG;
 Synonym: *St. m.* var. *hyalina*: Holotype male ?, Japan, MRSN;
 Synonym: *St. m. continentalis*: Holotype male and female, India: Dehra Dun, BMNH;
 Synonym: *St. h.* var. *major*: Type 2 males and 2 females, Philippines: Luzon, Los Banos, MIZT.

Distribution: Borneo, China, India, Japan, Java, Labuan, Laos, Myanmar, Malayasia, Maluku Islands, Nepal, New Guinea, Pakistan, Philippines, Sri Lanka, Sumatra, Thailand, Vietnam.

Records: SMNK: Nepal: Terai, R. Chitwan N.-Park, Gaida Camp, 27.35N-84.30E, leg. S.Ingrisch, 28.-29.X.1983 (male #10002); **ZSM:** Nepal: Rapti Tal, Jhawani, 200 m, leg. W.Dierl, W.Forster & W.Schacht, 17.V.1967 (male).

***Statilia nemoralis* (Saussure, 1870) Fig. 59**

- Pseudomantis nemoralis* Saussure, 1870: 228-229 (female) (Philippines).
 = *Pseudomantis nemoralis*. In: SAUSSURE 1871a: 35-36, pl. 4, fig. 8 (female), pl. 5, fig. 33 (male).
 = *Pseudomantis nemoralis*. In: SAUSSURE 1871b: 275-276 (female).
 = *Statilia nemoralis*. In: BEIER 1935: 92.
 = *Statilia nemoralis*. In: KOBLIK YE. A. et al. 2000: 12.
 = *Statilia nemoralis*. In: EHRMANN 2002: 334.
 = *Statilia nemoralis* var. *infuscata* Giglio-Tos, 1927: 411 (synonymized by EHRMANN 2002: 334).
 = *Mantis orientalis* SAUSSURE, 1870: 233 (male) (synonymized by GIGLIO-TOS 1927: 411).
 = *Mantis nobilis* Brunner de Wattenwyl, 1893: 70, pl. II, fig. 23a-23b.
 = *Mantis nobilis*. In: BEIER 1935: 92.
 = *Mantis nobilis*. In: BEIER 1942: 142.
 = *Mantis nobilis*. In: MATHUR 1946: 101.
 = *Mantis nobilis*. In: ROONWAL & BHASIN 1951: 317.
 = *Mantis nobilis*. In: ROY 1967: 127, 148.
 = *Mantis nobilis*. In: ROY 1968: 175 (new synonymized).
 = *Mantis nobilis*. In: NAEEM & YOUSUF 1996: 284.
 = *Mantis nobilis*. In: MUKHERJEE & SHISHODIA 2000: 65.
 = *Mantis nobilis*. In: NAEEM & YOUSUF 2000: 113.
 = *Mantis nobilis*. In: VYJAYANDI 2007: 95, pl. IX, fig. 21.
 = *Mantis indica* Mukherjee, 1995: 185, 201, 300-301, 357, fig. 119-121 (female).
 = *Mantis indica*. In: ROY 1999: 163.
 = *Mantis indica*. In: MUKHERJEE & SHISHODIA 2000: 65.
 = *Mantis indica*. In: EHRMANN 2002: 215.
 = *Mantis indica*. In: MUKHERJEE DAS & HAZRA 2005: 147.
 = *Mantis indica*. In: OTTE & SPEARMAN 2005: 185.
 = *Mantis indica*. In: VYJAYANDI 2007: 95.
 = *Mantis indica*. In: BERG, SCHWARZ & MEHL 2011: 44.
 = *Mantis indica*. In: GHATE, JADHAV, SURESHAN & SHARMA 2012: 22.
 = *Mantis indica*. In: CHATTERJEE & MUKHERJEE 2013: 4907-4909, fig. 1-6 (new synonymized).

Size: Medium-sized (body length in mm: male 37-45, female 45-50).

Type material: Holotype female, Philippines: Luzon, Manila, MNHN;

Synonym: *M. orientalis*: Holotype male, India orientalis, depository unknown;

Synonym: *St. n.* var. *infuscata*: Holotype male ?, Annam, Borneo, Sumatra, MRSN;

Synonym: *M. nobilis*: Type female, Myanmar, depository unknown;

Synonym: *M. indica*: Holotype female (#8639/H5), India: Bihar, Himachal, Pradesh-Chail, Allotype male (#8640/H5), Solan: Renuka Lake, NZSI.

Distribution: Borneo, Myanmar, China: Shanghai, India, Japan, Java, Korea, Malayasia, Nepal, Penang, Philippines, Sumatra, Taiwan, Thailand, Vietnam.

Records: SMNK: Nepal: Modi Khola-Tal, bei Thak, 28.17N-84.5E, 900 m, leg. S.Ingrisch, 14.X.1983 (male #05114).

Tenodera Burmeister, 1838

Mantis (Tenodera) Burmeister, 1838: 534.

= *Paratenodera* Rehn, 1903: 705.

= *Tenodera (Paratenodera)*. In: SHIRAKI 1932: 116.

= *Tenodera (Tenoderopsis)*. In: WERNER 1928: 19-20.

Type generis: *Mantis fasciata* Olivier, 1792: 640 (#6) (male) (Surinam - err.).

***Tenodera aridifolia* (Stoll, 1813) Fig. 60**

Mantis aridifolia Stoll, 1813: 65, pl. 22, fig. 82.

= *Mantis aridifolia*. In: AUDINET-SERVILLE 1839: 178-179 (male).

= *Paratenodera aridifolia*. In: REHN 1903: 705.

= *Paratenodera aridifolia*. In: REHN 1909: 180.

= *Tenodera aridifolia*. In: GIGLIO-TOS 1927: 415.

= *Tenodera aridifolia aridifolia*. In: BEIER 1935: 93.

= *Tenodera aridifolia sinensis* Saussure, 1871d: 417.

= *Tenodera aridifolia sinensis*. In: BEIER 1933: 328-329 (male and female) (China).

= *Tenodera aridifolia brevicollis* Beier, 1933: 329-330 (synonymized by EHRMANN 2002: 349).

= *Tenodera aridifolia brevicollis*. In: BEIER 1935: 93.

= *Mantis chloreudeta* Burmeister, 1838: 535 (Java, Ostindia) (synonymized by GIGLIO-TOS 1912: 37).

= *Mantis chloreudeta*. In: SAUSSURE 1869: 69.

= *Mantis japonica* Saussure, 1869: 69.

= *Mantis japonica*. In: SAUSSURE 1871a: 90-91.

= *Mantis japonica*. In: SAUSSURE 1871c: 238.

= *Mantis mandarinae* Saussure, 1871b: 289-290, pl. 7, fig. 61.

Size: Large to very-large (body length in mm: male 67-73, female 70-84).

Type material: Holotype male, India-E, ZMUH;

Synonym: *M. japonica*: Holotype male, Japan, ZMUH and Paratype female, Japan, depository unknown;

Synonym: *M. mandarinae*: Type male, China-W: Prov. Zhejiang, Ningbo, RMNH;

Synonym: *T. a. brevicollis*: Type male and female, China, SDEI.
Distribution: China, Flores Island, India, Japan, Java, Penang, Perak, Lombok, Myanmar, Nepal, Philippines (Palawan), Sarawak, Sulawesi, Sumatra, Sumba, Taiwan, Thailand.

Records: NME: Nepal: Annapurna around, Bagarchap, 2000 m NN, leg. M.Hartmann, 18.IX.1992 (male); Nepal: Prov. Narayani Sauraha, Rapti River Ufer, 27°34'80"N-84°29'49"E, 1800 m NN, LF, leg. A.Weigel, 18.IV.2000, (male); Nepal: Annapurna Region, Umg. Tal Hochebene, 1700 m NN, leg. A.Weigel, 20.IX.1992 (male); **SMNK:** Nepal: Lamjung Himal, between Baglungpani and Nalma, 28.13N-84.20E, 1000-1500 m, leg. S.Ingrisch, 22.X.1983. (male #10785 and female #10786).

Tenodera fasciata (Olivier, 1792) Fig. 61

- Mantis fasciata* Olivier, 1792: 640 (#6) (Surinam (err.)).
 = *Thespis fasciata*. In: AUDINET-SERVILLE 1831: 46, 55 (Surinam (err.)).
 = *Mantis (Tenodera) fasciata*. In: BURMEISTER 1838: 534-535 (Amboina, Java, Tranquebar).
 = *Mesopteryx fasciata*. In: KIRBY 1904b: 238.
 = *Tenodera fasciata*. In: GIGLIO-TOS 1912: 45-46.
 = *Mantis leptelytra* Lichtenstein, 1802: 20 (Surinam (err.)).
 = *Mantis attenuata* Stoll, 1813: 13, pl. 5, fig. 16 (male) (Surinam (err.)).
 = *Tenodera attenuata*. In: HEBARD 1920: 51 (male) (Java).
 = *Tenodera attenuata*. In: WERNER 1922b: 152.
 = *Mantis exsiccate* Audinet-Serville, 1839: 176 (Java).
 = *Tenodera intermedia* Saussure, 1870: 233.

Size: Large to very-large (body length in mm: male 76-90, female 90-105).

Type material: Holotype male, Surinam (err.), MNHN;

Synonym: *M. leptelytra*: Holotype male, Surinam (err.), depository unknown;

Synonym: *M. attenuata*: Holotype male, Allotype female, Indonesien: Moluccas, depository unknown;

Synonym: *M. exsiccate*: Holotype female, Java, BAUT ?, Audinet-Serville coll., MNHN;

Synonym: *T. intermedia*: Holotype female, New Zealand, depository unknown.

Distribution: Borneo, Sulawesi-S, China, Flores, India, Java, Malayasia, Myanmar, Nepal, New Zealand ?, Perak, Philippines, Palawan, Sri Lanka, Sumba, Thailand.

Records: SMNK: Nepal: Modi Khola-Tal, bei Thak, 28.17N-84.5E, 900 m, leg. S.Ingrisch, 14.X.1983 (male #10787).

Tenodera sinensis Saussure, 1871 Fig. 62

- Tenodera aridifolia* var. *sinensis* Saussure, 1871d: 417 (female).
 = *Tenodera aridifolia* var. *sinensis*. In: SAUSSURE 1871b: 294, pl. 7, fig. 62 (female).
 = *Tenodera aridifolia sinensis*. In: SHIRAKI 1932: 117.
 = *Tenodera aridifolia sinensis*. In: TINKHAM 1937b: 557-558.
 = *Tenodera aridifolia sinensis*. In: BAZYLUK 1977: 128.
 = *Tenodera aridifolia sinensis*. In: BRUINS 1999: 100, 1 fig..
 = *Mantis (Mantis) chloreudeta* De Haan, 1842 (nec Burmeister): 72-73 (male and female).
 = *Mantis mandarinaea* Saussure, 1871b: 289-290, pl. 7, fig. 61 (male).
 = *Paratenodera aridifolia* var. *sinensis* (Saussure, 1871). In: SHIRAKI 1911: 322-324.
 = *Paratenodera sinensis*. In: REHN 1903: 705-706.
 = *Paratenodera sinensis*. In: REHN-SMITH 1910: 177.
 = *Paratenodera sinensis*. In: LAURENT 1913: 431.
 = *Paratenodera sinensis*. In: KARNY 1915: 63, 105.
 = *Paratenodera sinensis*. In: LEONE 1947a: 64, 65, 68.
 = *Paratenodera sinensis*. In: LEONE 1947b: 418, 429.

Size: Large to very-large (body length in mm: male 83-85, female 76-85).

Type material: Holotype female, location not known, MHNG;
 Synonym: *M. (M.) chloreudeta*: Type male and female, Japan, RMNH;

Synonym: *M. mandarinaea*: Type male, China, RMNH.

Distribution: China, Japan, Micronesia, Thailand, in North America and Canada introduced.

Records: SMNK: Nepal-NW: Lali, 29°38'13"N-80°26'46"E, on a small river with no name, 1230 m, leg. local collectors, ded. Dr.G.Khatiwandara, 18.VI.1989 (female #12580).

Discussion:

The authors are aware that the presented checklist may be incomplete. The Himalaya Mountains form a natural barrier to China in the north and therefore a dispersion of Mantodea from the north by wind and animal or human activities can be excluded (BEIER 1939, WERNER 1909). The immigration of new species from the five neighbouring states of India is, however, very likely and possible at any time.

The enormous altitude range in Nepal (the lowest point about 65 m a.s.l. located in the south and the highest point at 8848 m a.s.l., Mount Everest, in the north), the particular topography and the presence of a rainy and dry season create many different ecological niches and very heterogeneous types of vegetation. The latter range from the very humid forests of the Ganges Plain, in the south, to the mountain deserts of the Tibetan Plateau, in the north. With a targeted collection in habitats that are suitable for Mantodea, the checklist can surely be extended by several species.

Acknowledgements

Harry Aberle (Vaihingen an der Enz), Maxwell V. L. Barclay (BMNH), Manfred K. Berg (Berlin), Stephan M. Blank (SDEI), Harald Bruckner (NHMW), Rob Byatt (Liverpool), Wolfram Donath (ZMB), Cornelia Ehrmann (Karlsruhe), Frank Ehrmann (Wadersloh/Liesborn), Michael Falkenberg (SMNK), Holger Framke (SDEI), Hemant Ghate (MCZMI), Matthias Hartmann (NME), Christian Kopietz (Karlsruhe), Tanja Kothe (SMNS), Francesco Lombardo (DBUC), Nina Mahovlic (ZSM), Tanja Kothe (SMNS), Michael Ohl (ZMB), Sören Materna (Germany), Tushar Kanti Mukherjee (NZSI), Alexander Riedel (SMNK), Heide Röhrscheid, (Frankfurt a.M.), Roger Roy (MNHN), Wolfgang Schawaller (SMNS), Klaus Schönitzer (ZSM), Tobias Schulze (Germany), Kai Schütte (ZMUH), Christian, J. Schwarz (University-Bochum), Evgeny Shcherbakov (ZMMU), Amoret Spooner, Oxford (OUMNH); Eva Sprecher-Übersax (NMB); Manuel Stehli (Karlsruhe); Martin, B.D. Stiewe (BMNH), Bärbel Stock (ZSM), Susanne Szczepanek (ZSM), Jürgen Thumulka (Karlsruhe), Manfred Verhaagh (SMNK), Frank Wieland (PMN), Achim Willsch (Durlangen), Chao Wu (IZCAS) and Isabelle Zürcher-Pfander (NMB).

Table 1: Alphabetical listing of genera and higher taxonomic groups up to families. The total number of each taxonomic group is given in the bottom line. Classification by EHRMANN & ROY in EHRMANN (2002) and ROY (2014).

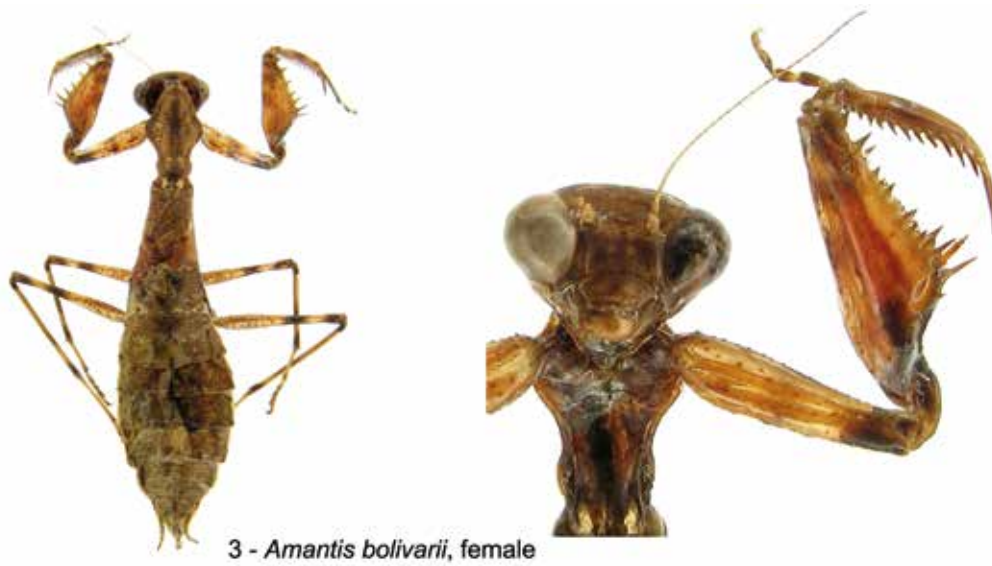
genus	taxon	family	subfamily	tribe
Acromantis Saussure, 1870	(2)	Hymenopodidae Giglio-Tos, 1915	Acromantinae Br. de Wattenwyl, 1893	./.
Amantis Giglio-Tos, 1915	(1)	Amelidae Westwood, 1889	Amelinae Westwood, 1889	Amelini Westwood, 1889
Ambivia Stål, 1877	(1)	Mantidae Latreille, 1802	Angelinae Beier, 1935	Ambiviini Giglio-Tos, 1919
Amorphoscelis Stål, 1871	(1)	Amorphoscelidae Stål, 1877	Amorphoscelinae Stål, 1877	./.
Bolivaria Stål, 1877	(1)	Mantidae Latreille, 1802	Solygiinae Giglio-Tos, 1919	Solygiini Giglio-Tos, 1919
Crebroter Audinet-Serville, 1839	(3)	Hymenopodidae Giglio-Tos, 1915	Hymenopodinae Giglio-Tos, 1915	Hymenopodini Giglio-Tos, 1915
Deiphobe Stål, 1877	(4)	Mantidae Latreille, 1802	Solygiinae Giglio-Tos, 1919	Solygiini Giglio-Tos, 1919
Didymocorypha Wood-Mason, 1877	(1)	Tarachodidae Giglio-Tos, 1917	Iridinae Westwood, 1889	./.
Empusa Illiger, 1798	(1)	Empusidae Burmeister, 1838	Empusinae Burmeister, 1838	Empusini Burmeister, 1838
Eomantis Giglio-Tos, 1915	(1)	Iridopterygidae Giglio-Tos, 1915	Tropidomantinae Giglio-Tos, 1915	Tropidomantini Beier, 1964
Ephestiasula Giglio-Tos, 1915	(2)	Hymenopodidae Giglio-Tos, 1915	Acromantinae Br. de Wattenwyl, 1893	./.
Gongylus Thunberg, 1815	(1)	Empusidae Burmeister, 1838	Empusinae Burmeister, 1838	Empusini Burmeister, 1838
Gonypetyllis Wood-Mason, 1891	(1)	Amelidae Westwood, 1889	Amelinae Westwood, 1889	Gonypetini Westwood, 1889
Heliomantis Giglio-Tos, 1915	(1)	Hymenopodidae Giglio-Tos, 1915	Acromantinae Br. de Wattenwyl, 1893	./.
Hestiasula Saussure, 1871	(1)	Hymenopodidae Giglio-Tos, 1915	Acromantinae Br. de Wattenwyl, 1893	Hestiasulini Giglio-Tos, 1915
Hierodula Burmeister, 1838	(6)	Mantidae Latreille, 1802	Hierodulinae Br. de Wattenwyl, 1893	Hierodulini Br. de Wattenw., 1893
Humbertiella Saussure, 1869	(3)	Liturgusidae Giglio-Tos, 1915	Liturgusinae Giglio-Tos, 1915	Humbertiellini Br.de Watten.,1893
Iris Saussure, 1869	(1)	Tarachodidae Giglio-Tos, 1917	Iridinae Westwood, 1889	./.
Leptomantella Uvarov, 1940	(1)	Tarachodidae Giglio-Tos, 1917	Caliridinae Giglio-Tos, 1915	./.
Mantis Linné, 1758	(2)	Mantidae Latreille, 1802	Mantinae Latreille, 1802	Mantini Latreille, 1802
Memantis Giglio-Tos, 1915	(3)	Amelidae Westwood, 1889	Amelinae Westwood, 1889	Amelini Westwood, 1889
Mesopteryx Saussure, 1870	(1)	Mantidae Latreille, 1802	Mantinae Latreille, 1802	Mantini Latreille, 1802
Rhombodera Burmeister, 1838	(1)	Mantidae Latreille, 1802	Mantinae Latreille, 1802	Paramantini Roy, 1973
Rhombomantis Kaltenbach, 2005	(2)	Mantidae Latreille, 1802	Hierodulinae Br. de Wattenwyl, 1893	Hierodulini Br.de Wattenwyl,1893
Sceptuchus Hebard, 1920	(1)	Iridopterygidae Giglio-Tos, 1915	Nanomantinae Ehrmann & Roy, 2002	Nanomantini Ehrm. & Roy, 2002
Schizocephala Audinet-Serv., 1831	(1)	Mantidae Latreille, 1802	Schizocephalinae Saussure, 1869	./.
Statilia Stål, 1877	(2)	Mantidae Latreille, 1802	Mantinae Latreille, 1802	Mantini Latreille, 1802
Tenodera Burmeister, 1838	(3)	Mantidae Latreille, 1802	Mantinae Latreille, 1802	Tenoderini Br. de Wattenw., 1893
28	49	8	15	13

1 - *Acromantis grandis*, male**Figure 1:** *Acromantis grandis* Beier, 1930 (male, 28 mm) (ZSM) - Nepal.



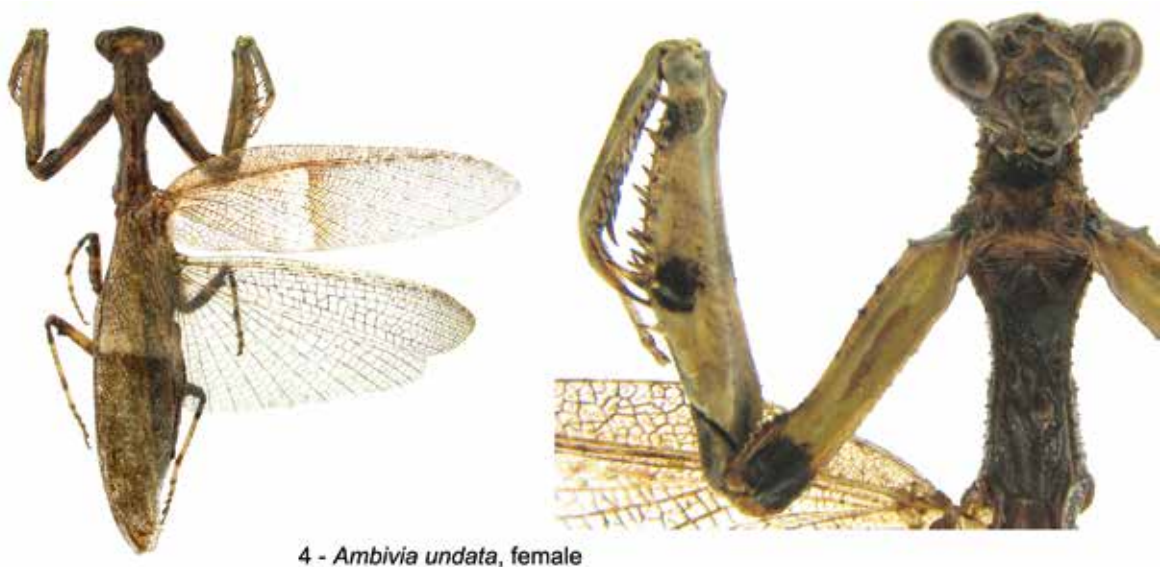
2 - *Amantis bolivarii*, male

Figure 2: *Amantis bolivarii* Giglio-Tos, 1915 (male, 17 mm) (SMNK-05720) - Nepal.



3 - *Amantis bolivarii*, female

Figure 3: *Amantis bolivarii* Giglio-Tos, 1915 (female, 19 mm) (SMNK-11908) - Nepal.



4 - *Ambivia undata*, female

Figure 4: *Ambivia undata* (Fabricius, 1793) (female, 44 mm) (SMNK-00333) - Nepal.



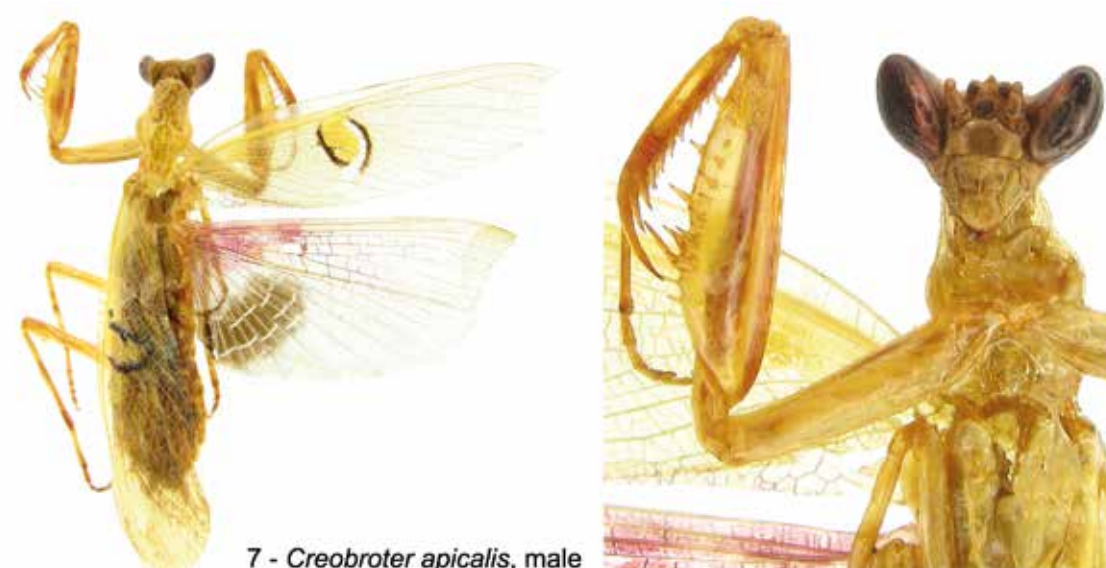
5 - *Amorphoscelis annulicornis*, male

Figure 5: *Amorphoscelis annulicornis* Stål, 1871 (male, 18 mm) (ZSM) - Nepal.



6 - *Bolivaria xanthoptera*, female

Figure 6: *Bolivaria xanthoptera* (Olivier, 1792) (female, 40 mm) (SMNK-12583) - Iran.



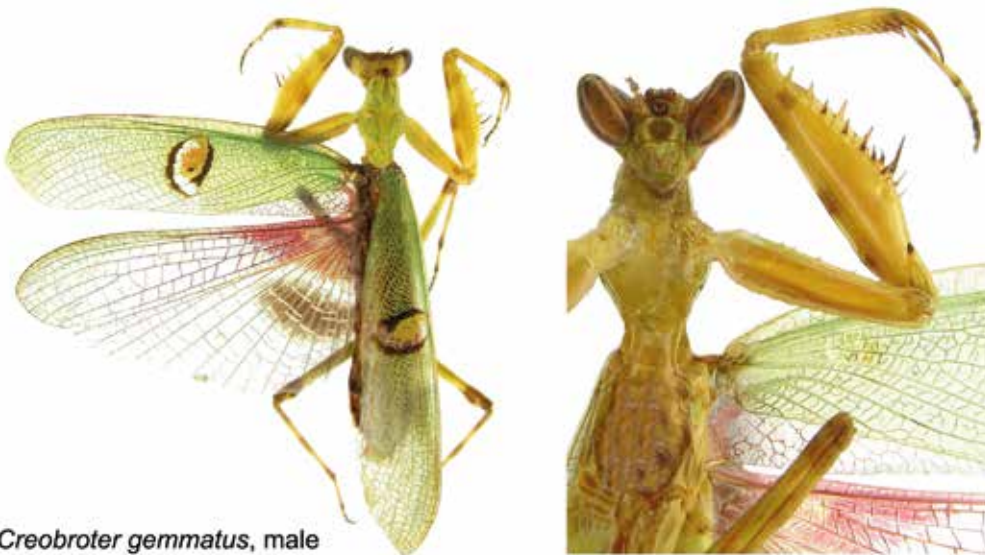
7 - *Creobroter apicalis*, male

Figure 7: *Creobroter apicalis* Saussure, 1869 (male, 25 mm) (SMNK-01756) - Nepal.



8 - *Creobroter apicalis*, female

Figure 8: *Creobroter apicalis* Saussure, 1869 (female, 28 mm) (ZSM) - Nepal.



9 - *Creobroter gemmatus*, male

Figure 9: *Creobroter gemmatus* (Stoll, 1813) (male, 26 mm) (SMNK-01758) - Nepal.



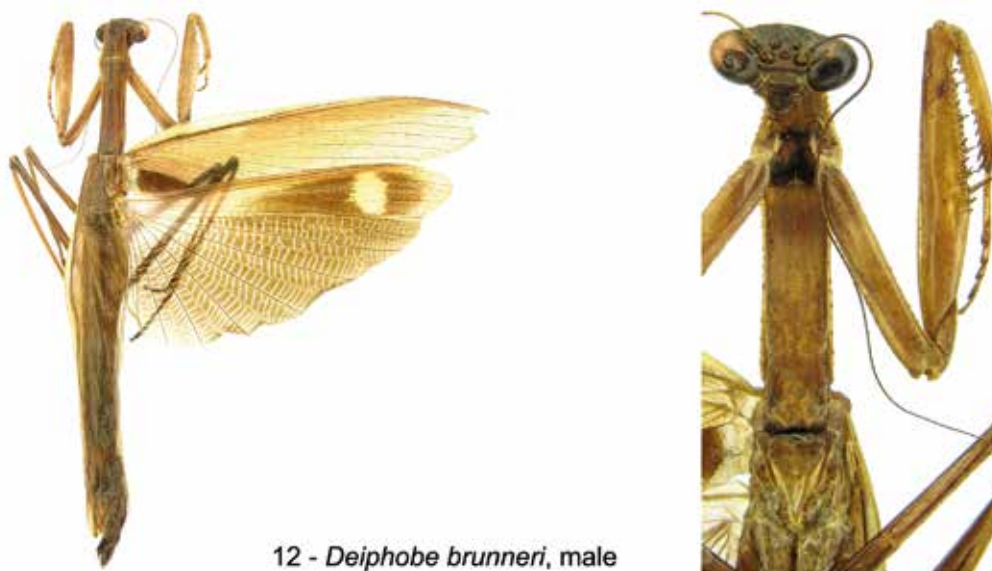
10 - *Creobroter gemmatus*, female

Figure 10: *Creobroter gemmatus* (Stoll, 1813) (female, 38 mm) (SMNK-01759) - Nepal.



11 - *Creobroter urbanus*, female

Figure 11: *Creobroter urbanus* (Fabricius, 1775) (female, 30 mm) (SMNK-01757) - Nepal.



12 - *Deiphobe brunneri*, male

Figure 12: *Deiphobe brunneri* (Saussure, 1871) (male, 70 mm) (SMNK-02234) - Nepal.



13 - *Deiphobe incisa*, male

Figure 13: *Deiphobe incisa* Werner, 1933 (male, 88 mm) (SMNK-02230) - Nepal.



14 - *Deiphobe infuscata*, male



Figure 14: *Deiphobe infuscata* (Saussure, 1871) (male, 58 mm) (NMB) - Nepal.



15 - *Deiphobe mesomelas*, female



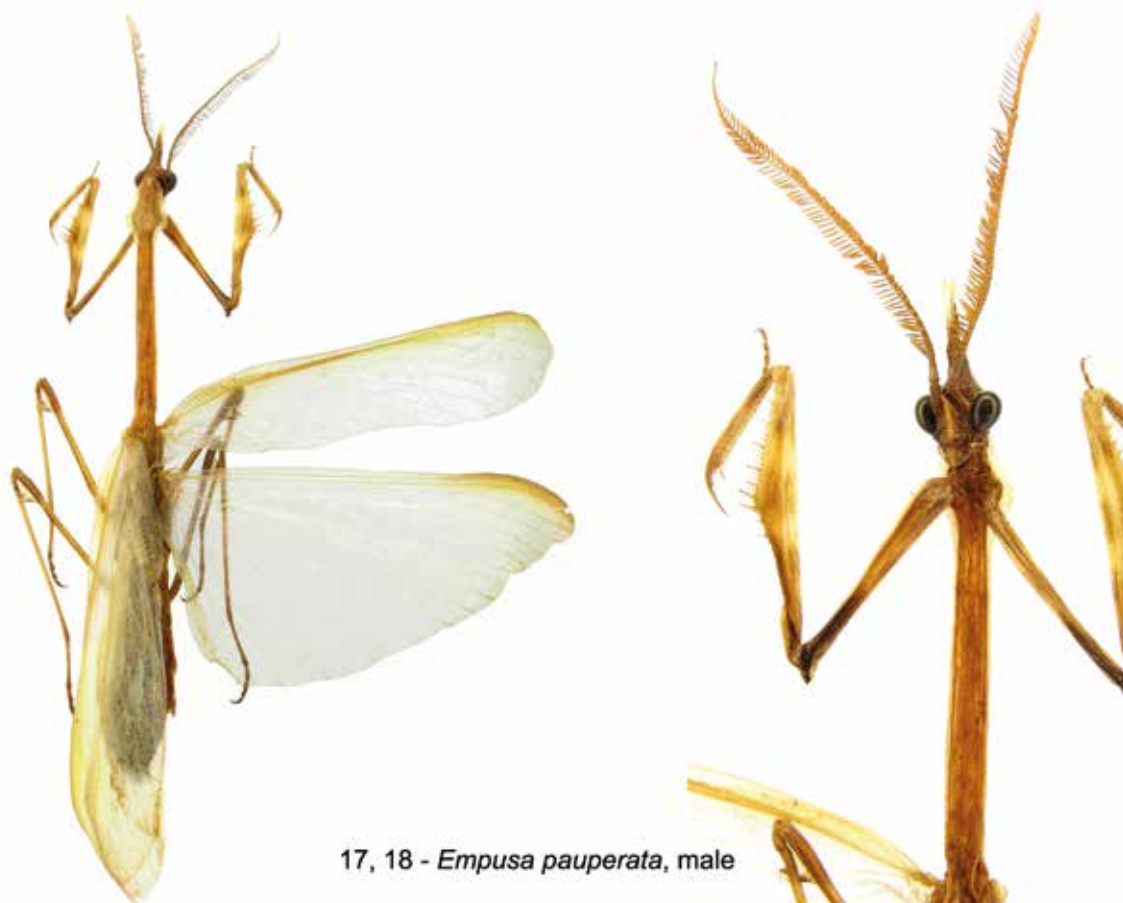
Figure 15: *Deiphobe mesomelas* (Olivier, 1792) (female, 60 mm) (SMNK-02235) - Nepal.



16 - *Didymocorypha lanceolata*, male



Figure 16: *Didymocorypha lanceolata* (Fabricius, 1798) (male, 30 mm) (SMNK-02329) - Nepal.



17, 18 - *Empusa pauperata*, male

Figure 17-18: *Empusa pauperata* (Fabricius, 1781) (male, 50 mm) (SMNK-02607) - Nepal.



19 - *Empusa pauperata*, female

Figure 19: *Empusa pauperata* (Fabricius, 1781) (female, 55 mm) (SMNK-02608) - Nepal.



Figure 20: *Eomantis guttatipennis* (Stål, 1877) (female, 26 mm) (SMNK-12585) - Nepal.

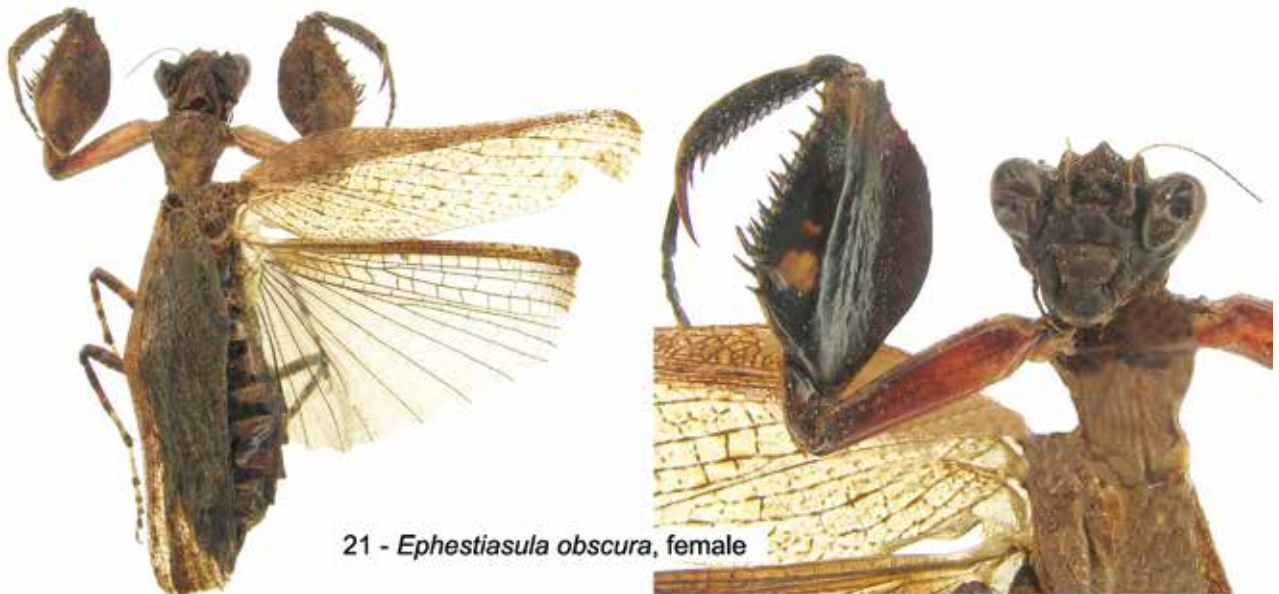


Figure 21: *Epestiasula obscura* (Lombardo, 1995) (female, 27 mm) (SMNK-06689) - Nepal.



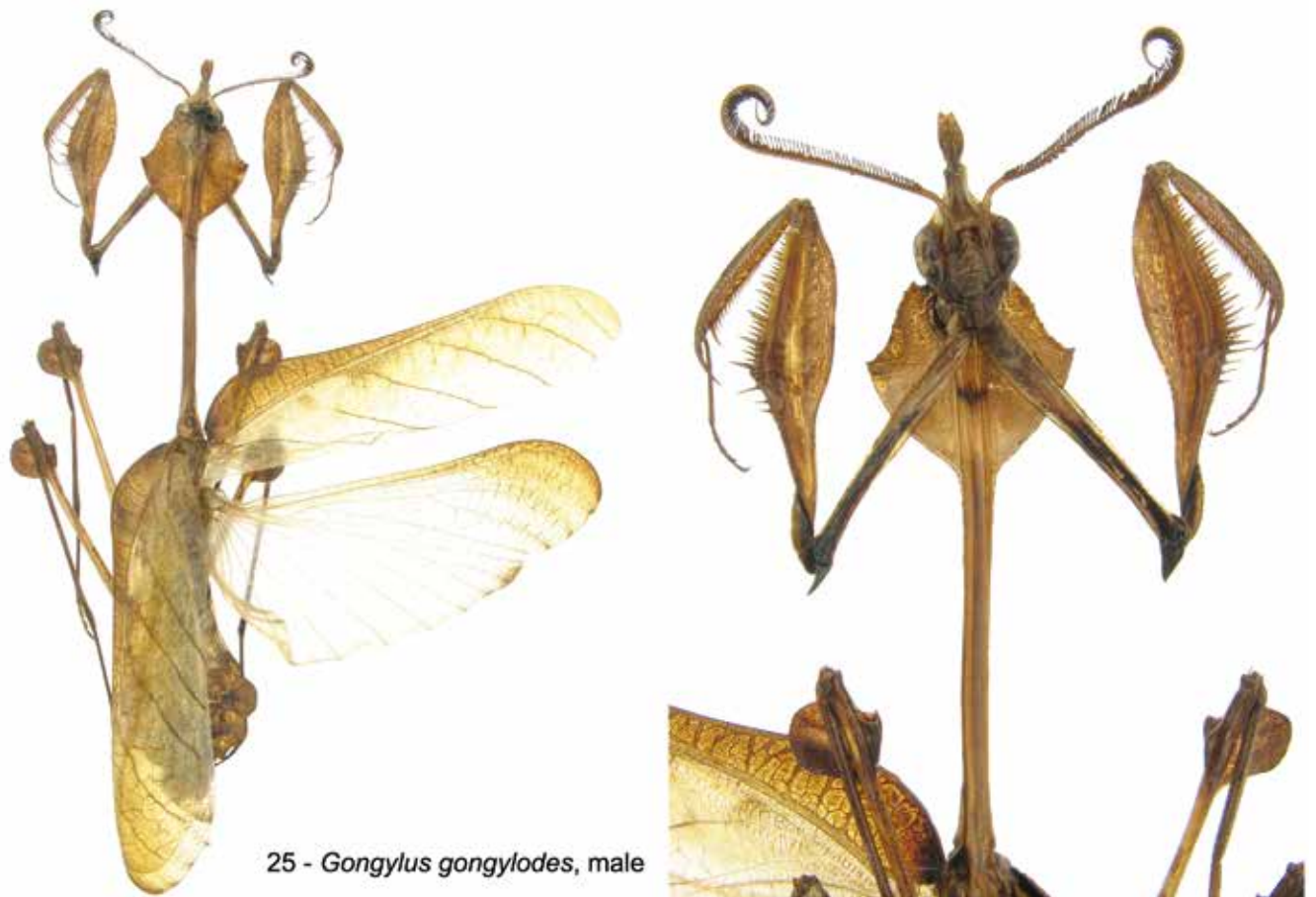
22 - *Ephestiasula pictipes*, male

Figure 22: *Ephestiasula pictipes* (Wood-Mason, 1879) (male, 17 mm) (SMNK-02736) - Nepal.



23, 24 - *Ephestiasula pictipes*, female

Figure 23-24: *Ephestiasula pictipes* (Wood-Mason, 1879) (female, 19 mm) (SMNK-03628) - Nepal.



25 - *Gongylus gongylodes*, male

Figure 25: *Gongylus gongylodes* (Linné, 1758) (male, 68 mm) (SMNK-03340) - Nepal.



26 - *Gongylus gongylodes*, female

Figure 26: *Gongylus gongylodes* (Linné, 1758) (female, 78 mm) (SMNK-03341) - Nepal.



27 - *Gonypetyllis semuncialis*, male

Figure 27: *Gonypetyllis semuncialis* W.-Mason, 1891 (male, 11 mm) (ZSM) - Nepal.



28 - *Heliomantis elegans*, female

Figure 28: *Heliomantis elegans* (Navás, 1904) (female, 54 mm) (SMNK-03625) - Nepal.



29 - *Hestiasula brunneriana*, female

Figure 29: *Hestiasula brunneriana* Saussure, 1871 (female, 26 mm) (SMNK-12463) - Nepal.

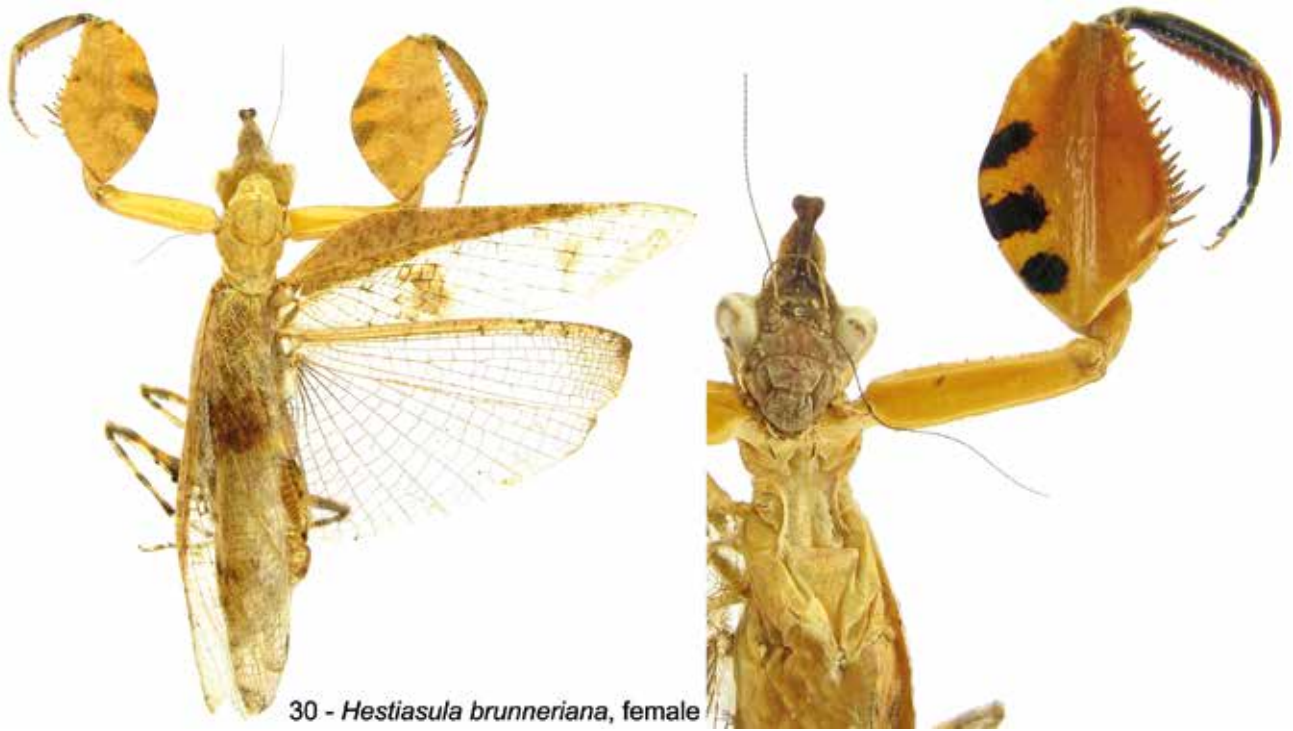


Figure 30: *Hestiasula brunneriana* Saussure, 1871 (female, 29 mm) (SMNK-03689) - Sri Lanka.



Figure 31: *Hierodula coarctata* Saussure, 1869 (male, 42 mm) (SMNK-03845) - Nepal.



Figure 32: *Hierodula membranacea* Burmeister, 1838 (female, 80 mm) (SMNK-03848) - Nepal.



Figure 33: *Hierodula patellifera* (Audinet-Serville, 1839) (female, 55 mm) (SMNK-12587) - Nepal.



34 - *Hierodula tenuidentata*, female

Figure 34: *Hierodula tenuidentata* Saussure, 1869 (female, 60 mm) (SMNK-03844) - Nepal.



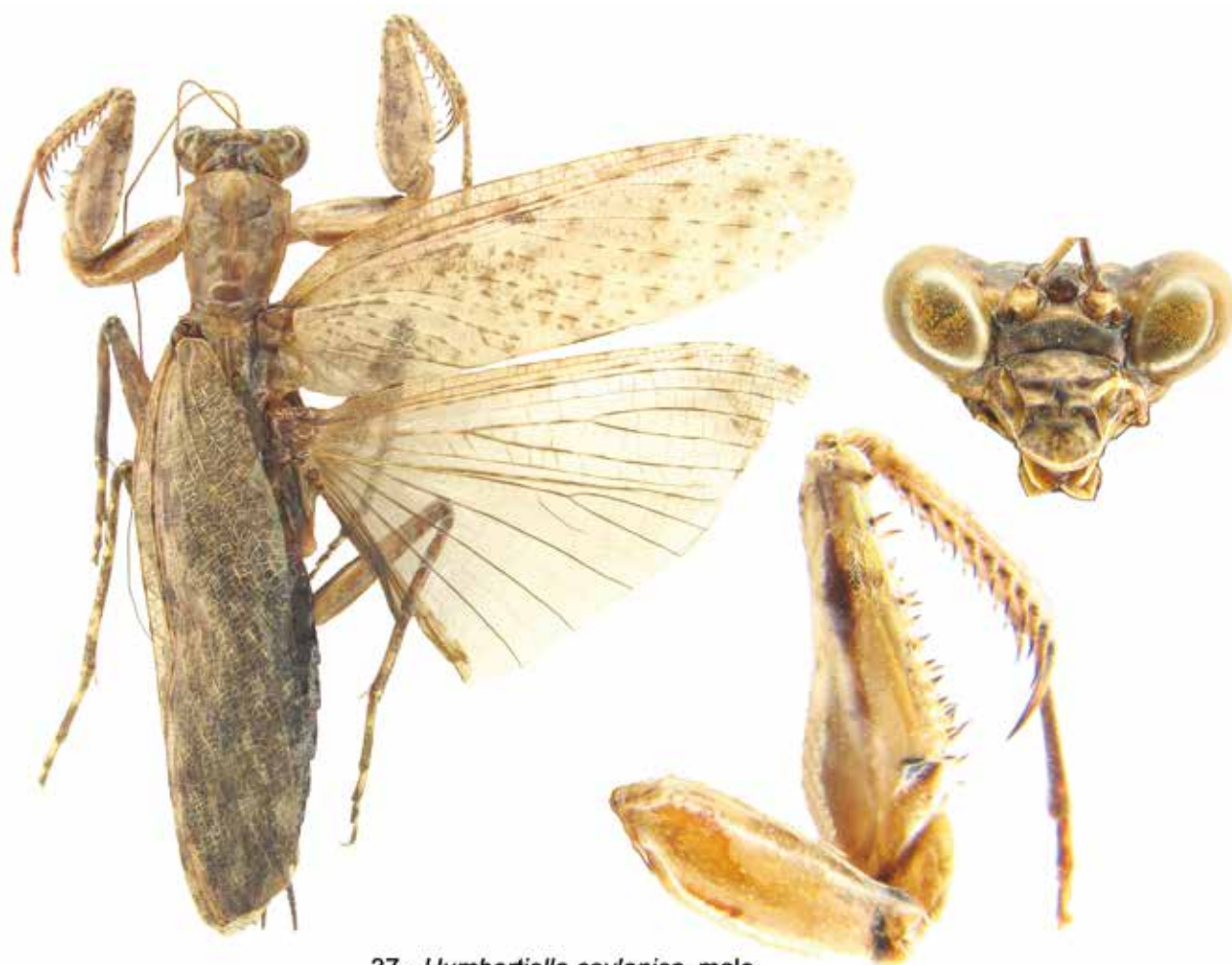
35 - *Hierodula transcaucasica*, female

Figure 35: *Hierodula transcaucasica* Br.de Wattenw., 1878 (female, 55 mm) (SMNK-03849) - Nepal.



36 - *Hierodula unimaculata*, male

Figure 36: *Hierodula unimaculata* (Olivier, 1792) (male, 53 mm) (SMNK-11907) - Nepal.



37 - *Humbertiella ceylonica*, male

Figure 37: *Humbertiella ceylonica* Saussure, 1869 (male, 34 mm) (ZSM) - Nepal.



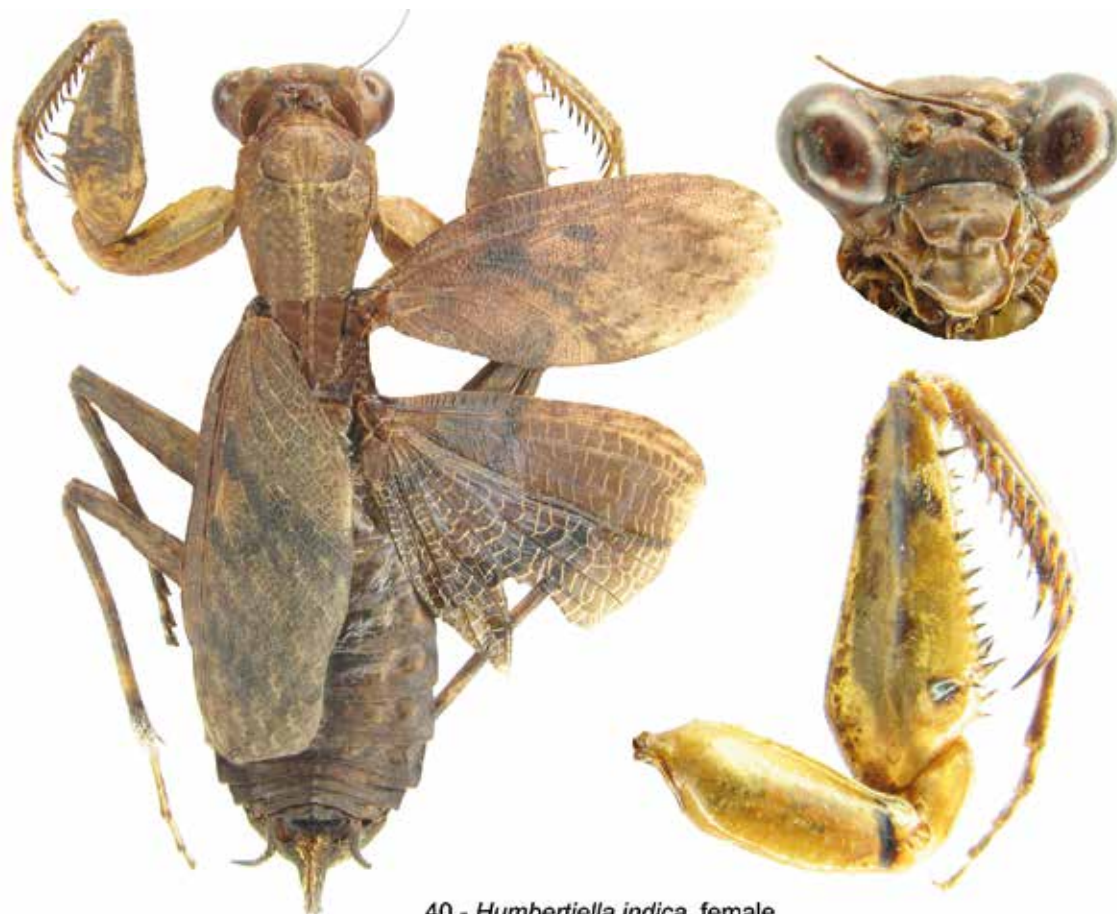
38 - *Humbertiella ceylonica*, female

Figure 38: *Humbertiella ceylonica* Saussure, 1869 (female, 37 mm) (SMNS) - Sri Lanka.



39 - *Humbertiella indica*, male

Figure 39: *Humbertiella indica* Saussure, 1869 (male, 27 mm) (ZMHB) - Nepal.



40 - *Humbertiella indica*, female

Figure 40: *Humbertiella indica* Saussure, 1869 (female, 42 mm) (ZMHB) - India.



41 - *Humbertiella similis*, male

Figure 41: *Humbertiella similis* Giglio-Tos, 1917 (male, 26 mm) (HT) (ZMHB) - Nepal.



42 - *Humbertiella similis*, female

Figure 42: *Humbertiella similis* Giglio-Tos, 1917 (female, 30 mm) (AT) (ZMHB) - Sri Lanka.



43 - *Iris orientalis*, male

Figure 43: *Iris orientalis* Wood-Mason, 1882 (male, 30 mm) (SMNK-04723) - Nepal.



44 - *Iris orientalis*, female

Figure 44: *Iris orientalis* Wood-Mason, 1882 (female, 40 mm) (SMNK-04724) - Nepal.



45 - *Leptomantella indica*, male

Figure 45: *Leptomantella indica* (Giglio-Tos, 1915) (male, 35 mm) (SMNK-04812) - Nepal.



46 - *Mantis religiosa religiosa*, male

Figure 46: *Mantis religiosa religiosa* Linné, 1758 (male, 55 mm) (SMNK-05113) - Nepal.



47 - *Mantis religiosa inornata*, male

Figure 47: *Mantis religiosa inornata* Werner, 1930 (male, 43 mm) (SMNK-12590) - Nepal.



48 - *Memantis anomala*, male

Figure 48: *Memantis anomala* Lombardo, 1993 (female, 24 mm) (SMNK-12464) - Nepal.



49 - *Memantis fuliginosa*, male

Figure 49: *Memantis fuliginosa* (Thunberg, 1815) (male, 23 mm) (ZSM) - Nepal.



50 - *Memantis fuliginosa*, female

Figure 50: *Memantis fuliginosa* (Thunberg, 1815) (female, 20 mm) (SMNK-05721) - Nepal.



51 - *Mesopteryx platycephala*, male

Figure 51: *Mesopteryx platycephala* (Stål, 1877) (male, 95 mm) (SMNK-05723) - Nepal.



52 - *Rhombodera tectiformis*, female



Figure 52: *Rhombodera tectiformis* Saussure, 1870 (female, 78 mm) (SMNK-08221) - Nepal.



53 - *Rhombomantis butleri*, male



Figure 53: *Rhombomantis butleri* (Wood-Mason, 1878) **comb. nov.**, (male, 60 mm) (SMNK-08004) - Nepal.



54 - *Rhombomantis fusca*, female



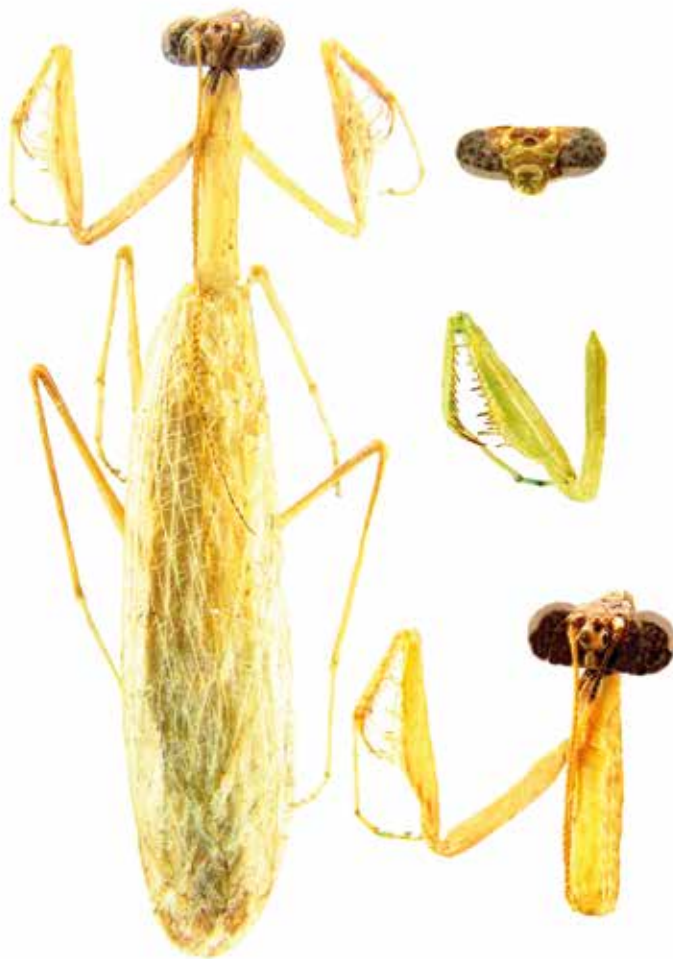
Figure 54: *Rhombomantis fusca* (Lombardo, 1992) **comb. nov.**, (female, 68 mm) (SMNK-08208) - Thailand.



55 - *Rhombomantis woodmasoni*, female



Figure 55: *Rhombomantis woodmasoni* (Werner, 1931) **comb. nov.**, (female, 72 mm) (SMNK-08224) - Nepal.



56 - *Sceptuchus* spec., male

Figure 56: *Sceptuchus* spec. (male, 22 mm) (SMNK-11527) - Laos.



57 - *Schizocephala bicornis*, male

Figure 57: *Schizocephala bicornis* (Linné, 1758) (male, 100 mm) (SMNK-08469) - Nepal.



Figure 58: *Statilia maculata* (Thunberg, 1784) (male, 40 mm) (SMNK-10002) - Nepal.



Figure 59: *Statilia nemoralis* (Saussure, 1870) (male, 45 mm) (SMNK-05114) - Nepal.



Figure 60: *Tenodera aridifolia* (Stoll, 1813) (female, 74 mm) (SMNK-10786) - Nepal.



61 - *Tenodera fasciata*, male

Figure 61: *Tenodera fasciata* (Olivier, 1792) (male, 76 mm) (SMNK-10787) - Nepal.



62 - *Tenodera sinensis*, female

Figure 62: *Tenodera sinensis* Saussure, 1871 (female, 78 mm) (SMNK-12580) - Nepal.

References

- ADELUNG, N. (1907): Beiträge zur Kenntnis der Orthopterenfauna Transkaukasiens. - Horae Societatis Entomologicae Rossicae, St. Pétersbourg **38**: 32-80.
- ANONYMOUS (1907): Mantis Fund aus Nepal (*Mantis religiosa* LINNÉ). - Zeitschrift für Wissenschaftliche Insektenbiologie Husum **3**: 24.
- AUDINET-SERVILLE, J. G. (1831): Revue méthodique des Insectes de l'ordre des Orthoptères. - Annales des sciences naturelles Paris **22**: 1-101 (Mantodea: 44-56).
- (1839): Histoire naturelle des Insectes Orthoptères. - Paris, Roret, V-XVIII+776 pp. (Mantodea: 1-9, 133-214, 767-776).
- BATES, H. W. (1888): On a Collection of Coleoptera from Korea (Tribes Geodophaga, Lamellicornia, and Longicornia), made by Mr. J. H. Leech, F.Z.S. - Proceedings of the Zoological Society of London, **56**: 367-380.
- BAZYLUK, W. (1960): Die geographische Verbreitung und Variabilität von *Mantis religiosa* (L.) (Mantodea, Mantidae), sowie Beschreibungen neuer Unterarten. - Annales Zoologici Warszawa **16** (15): 231-272, 57 fig.
- (1977): Fauna Polski, Blattodea et Mantodea (Insecta). - Polska Akademia Nauk, Warszawa **6**: 1-175 (Mantodea: 109-167).
- BEESON, C. F. C. (1941): The ecology and control of the forest insects of India and the neighbouring Countries. - Indian Agricultural Research Institute, New Delhi **1**: 1007 pp. (Mantodea: 295-296, 518, 709-710, 724-727, 757-758, 822-824).
- BEIER, M. (1930): New and rare Mantodea (Orthoptera) in the British Museum. - Annals and Magazine of Natural History London **10** (6): 432-460.
- (1933): Die Mantodeen Chinas. Beiträge zur Fauna sinica. - Mitteilungen aus dem Zoologischen Museum Berlin **18** (3): 322-337.
- (1934): Genera Insectorum. Mantodea. Subfamilie: Hymenopodinae. - Tervueren, Wytsman, supply. 196, 37 p.
- (1935): Genera Insectorum. Mantodea. Subfamilie: Mantinae. - Tervueren, Wytsman, supply. 203, 146 p.
- (1939): Die geographische Verbreitung der Mantodeen. - 7. Internationaler Kongress der Entomologie, Berlin 15.-20. August 1938, **1**: 5-15.
- (1942): Neue und seltene Mantodeen aus deutschen Museen. - Annalen aus dem Naturhistorischen Museum Wien **52**: 126-154.
- (1956): Mantiden aus Ceylon (Orth.). Ergebnisse einer Sammelreise von F. Keiser nach Ceylon 1953/54. - Verhandlungen der Naturforschenden Gesellschaft in Basel **67** (1): 33-40.
- (1962): Mantiden aus Afghanistan. Contribution à l'étude de la faune d'Afghanistan 72, voyages du Dr. K. Lindberg 1957-60. - Särtryck Opuscula Entomologica Uppsala **27** (1-2): 111-114.
- (1964a): Blattopteroidea-Mantodea. H. G. Bronns Klassen und Ordnungen des Tierreichs. III. Abt.: Insecta-Arthropoda. - Leipzig, Akademische Verlagsgesellschaft, 5. ed., **5** (6): 850-970.
- (1964b): Ein neues Mantiden-Genus aus Israel. - Israel Journal of Zoology, Jerusalem **13**: 184-186.
- (1967): Beiträge zur Kenntnis der Fauna Afghanistans. Mantidea. Sammelergebnisse von O. Jakes 1963-64, D. Povolny 1965, D. Povolny & Fr. Tenora 1966, J. Simek 1965-66. - Acta Musei Moraviae **52**: 195-198.
- (1968) In: Helmcke, J.-G., Starck, D. & Wermuth, H. (1968): Handbuch der Zoologie. 12.- Mantodea (Fangheuschrecken). - Walter de Gruyter & Co., Teil 2/12, **4**(2): 1-47, 37 Abb.; Berlin.
- BERG, M. K., CHR. J. SCHWARZ & J. E. MEHL (2011): Die Gottesanbeterin, *Mantis religiosa*. - Hohenwarsleben, Die Neue Brehm-Bücherei, Westarp Wissenschaften, (656): 520 p.
- BLANCHARD, C. E. In: CASTELNAU, F. L. L. (1840): Histoire naturelle des Insectes. - Paris, Duménil, **3**: 672 pp. (Mantodea: 8-13).
- BLANCHARD, C. E. (1845): Histoire des Insectes. Mantodea and Phasmoda. - Paris, Librairie de Frimin Didot Frères, 524 pp. (Mantodea: 221-233).
- (1850): Histoire naturelle des Insectes (Mantodea and Phasmoda). - Paris, Imprimerie Lacour, **1**: 4+128 pp. (Mantodea: 1-19).
- BOLIVAR, I. (1897): Les Orthoptères de St.-Joseph's College à Trichinopoly (Sud de l'Inde). - Annales de la Société Entomologique de France **66** (2): 282-316.
- (1899): Les Orthoptères de St.-Joseph's College à Trichinopoly (Sud de l'Inde). - Annales de la Société Entomologique de France **68**: 761-812.
- (1914): Examen de un pequeño lote de Ortópteros de Mindanao y del Himalaya. - Asociación Española para el progreso de las Ciencias, Madrid [1913], secc. 4, **5**: 205-214.
- BORRE DE PREUDHOMME, C. (1883): Liste des Mantides du Musée Royal d'Histoire Naturelle de Belgique. - Annales de la Société Entomologique de Belgique, Brüssel **27**: 60-81 (Mantodea: 3-24).
- BRUINS, E. (1999): Terrarien Enzyklopädie. - Karl Müller Verlag, Erlangen 320 pp..
- BRULLÉ, G. A. (1835): Cinquième ordre. Orthoptères. In: AUDOUIN, J.V. & BRULLÉ, G.A. (EDS.), Histoire naturelle des Insectes, comprenant leur classification, leur moeurs, at la description des espèces. - Paris, Pillot, [1834-1838] **9**: 230 pp. (Mantodea: 61-81, pl. 6).
- BRUNNER DE WATTENWYL, K. In: SCHNEIDER, O. (1878): Naturwissenschaftliche Beiträge zur Kenntnis der Kaukasusländer auf Grund seiner Sammelbeute. - Naturwissenschaftliche Beiträge Kaukasus, Baku **5**: 87-90.
- BRUNNER DE WATTENWYL, K. (1882): Prodromus der europäischen Orthopteren. - Leipzig, Verlag Engelmann, **32**: V-XXXII+466 pp. (Mantodea: 54-71).
- (1892): Notizen über die Orthopteren-Fauna Ceylon's. - Entomologische Nachrichten, Berlin **18** (22): 337-340.
- (1893): Révision du système des Orthoptères et description des espèces rapportées par M. Léonardo Fèa de BIRMANIE. - Annali del Museo Civico di Storia Naturale di Genova, Serie 2, **13** (33): 230 pp. (Mantodea: 5-8, 54-76).
- BURMEISTER, H. C. (1838): Handbuch der Entomologie. Besondere Entomologie - Kaukerfe - Gymnognatha - vulgo Orthoptera. Fangschrecken, Mantodea. - Berlin, Verlag Ensilm, (2.Abt. 1.Hlf.), **2**: V-VIII+397-756 pp. (Mantodea: 517-552).
- CHARPENTIER, T. von (1841): Einige Bemerkungen die Orthopteren betreffend, besonders in Bezug auf BURMEISTER's und SERVILLE's Schriften über diese Insektenabtheilung (VII). - Zeitschrift für die Entomologie, (E. F. Germar), Leipzig **3** (2): 283-305.
- (1844): Bemerkungen zu A. A. H. Lichtensteins Abhandlungen über Mantis-Arten. - Zeitschrift für die Entomologie, (E. F. Germar), Leipzig **5** (1/2): 272-311.
- CHATTERJEE, P. & T. K. MUKHERJEE (2013): *Mantis indica* MUKHERJEE, 1995: A synonym of *Statilia nemoralis* (SAUSSURE, 1870) (Insecta: Mantodea). - Journal of Threatened Taxa, India **5** (14): 4907-4909, 6 fig.
- CHATTERJEE, P. & G. SRINIVASAN (2013): Morphological variation in *Hierodula patellifera patellifera* SERVILLE, 1839 from India. - Prommalia, Journal for Zoological Taxonomists, Kolkata **1**: 131-135.
- CHATURVEDI, N. & V. HEGDE (2000): Mantid fauna of Sanjay Gandhi National Park, Mumbai, with some new records for Maharashtra state. - Journal Natural History Society Bombay **97** (2): 295-297.
- CHOPARD, L. & P. DREUX (1966): Contribution à l'étude des Orthoptéroïdes du Nepal. - Annales de la Société Entomologique de France, Paris **2** (3): 601-616.
- (1924): The Fauna of an Island in the Chilka Lake. The Dermaptera and Orthoptera of Barkuda Island. - Records of the Indian Museum Calcutta **26** (2): 165-191.
- (1949): Ordre des Dictyoptères. Sous-Ordre des Mantodea. - In: Grassé, P.-P. (1949): Traité de Zoologie. Anatomie, Systematique, Biologie. - Masson et Éditeurs, Paris **9**: 1117 pp. (Mantodea: 386-407, fig. 75-90).
- COSMOVICI, L.-C. (1888): Sur les insectes du genre Mantis, et description d'une nouvelle espece des environs de Jassy. - Bulletin de la Société de Zoologie de France, Paris **13**: 169-173.
- DANIEL, A. M., N. S. KUMAR & N. BAKTHAVATSALAM (1983): Bioecology of *Zaniothrips ricini* Bhatti (Panchaethripinae: Terebrantia: Thysanoptera). A new thrips pest of castor (*Ricinus communis*: Euphorbiaceae). - Proceedings Indian Academy of Sciences, (Animal Sciences), Bangalore **92** (2): 87-94.
- DAS, B. C. (2012): Ecosystem services and conservation value of Himalayan insects with the special reference to Uttarakhand under the influence of the changing climate. - In: HARTMANN, M. & J. WEIPERT (Hrsg.): Biodiversity and Natural heritage of the Himalaya, vol. **IV**, Verein der Freunde und Förderer des Naturkundemuseums Erfurt e.V., Erfurt (4): 121-127.
- DE HAAN, W. (1842): Bijdragen tot de Kennis der Orthoptera, Zoologie. - Leyden, Verhandelingen over de natuurlijke Geschiedenis der Nederlandsche overzeesche Bezittingen, 45+248 pp. (Mantodea: 54-95).

- DRURY, D. (1770): Illustrations of Natural History of exotic Insects. - White, London **1**: 30+130 pp. (Mantodea: 128-130), 50 pl.
- EHRMANN, R. (2002): Mantodea - Gottesanbeterinnen der Welt. - Verlag Natur und Tier, Münster/Westf., 1. ed., 519 pp..
- (2005): Bibliographie zum Thema Mantodea. - Mantodea, Goecke & Evers, Keltern **2**: 1-432.
- (2011): Mantodea from Turkey and Cyprus (Dictyoptera: Mantodea). - *Articulata* **26** (1): 1-42.
- FABRICIUS, J. C. (1775): *Systema Entomologiae. Mantodea & Phasmodea.* - Flensburgi et Lipsiae, Korte, 30+832 pp. (Mantodea: 268-279).
- (1781): *Species Insectorum Mantodea & Phasmodea.* - Hamburgi et Kilonii, Bohn, **1**: 8+552 pp. (Mantodea: 340-351).
- (1787): *Mantissa Insectorum Mantodea & Phasmodea.* - Hafniae, Probst, **1**: 20+348 pp. (Mantodea: 224-231).
- (1793): *Entomologia Systematica. Mantodea & Phasmodea.* - Hafniae, Probst, **2**: 8+519 pp. (Mantodea: 12-25).
- (1798): *Supplementum Entomologiae systematicae.* - Hafniae, Probst & Storch, 2+572 pp. (Mantodea: 183-193).
- FISCHER v. WALDHEIM, G. (1846): *Orthoptera Imperii Russici.* - Nouveaux Mémoires de la Société Impériale Naturalistes de Moscou, Moscou **8**: 1-151, 18 pl. (Mantodea: 87-105).
- GEOFFROY, M. (1762): *Histoire abrégée des Insectes, dans laquelle ces animaux sont rangés suivant un ordre méthodique.* - Delalain, Paris **1**: 28+523 pp. (Mantodea: 399-400).
- GERSTAECKER, A. (1873): *Gliederthier-Fauna des Sansibar-Gebietes. Nach dem von Dr. O. KERSTEN während der V. D. DECKEN'SCHEN Ost-Afrikanischen Expedition im Jahre 1862 und von C. COOKE auf der Insel Sansibar im Jahre 1864 gesammelten Materials.* - Verlag C.F. Winter, Leipzig & Heidelberg **3** (2): XII+542 pp. (Mantodea: 11-18).
- GHATE, H. V. & S. P. RANADE (2002): Biodiversity of mantids, Insecta: Mantodea, in Pune (Western Ghats) with notes on other regions of Maharashtra. - *Journal Natural History Society Bombay* **99** (2): 348-353.
- GHATE, H. V., S. S. JADHAV, P. M. SURESHAN & R. M. SHARMA (2012): Updated checklist of Indian Mantodea (Insecta). - (unclear if published), : 1-31.
- GIGLIO-TOS, E. (1912): *Mantidi esotici. V- Mantis-Tenodera-Hierodula-Rhombodera.* - *Bullettino della Società entomologica Italiana, Firenze* **43**: 3-167.
- (1914a): *Mantidi esotici. VII- Vatinae.* - *Bollettino dei Musei di Zoologia ed Anatomia Comparata della Reale Università, Torino* **29** (684): 1-87.
- (1914b): *Raccolti da S. A. R. la Duchessa d'Aosta nella regione dei grandi laghi dell'Africa equatoriale. Revisione della sottofamiglia die Toxoderini.* - *Anuario del Museo Zoologico Della R. Università di Napoli, (N.S.)* **4** (15): 1-17.
- (1915a): *Mantidi esotici. VIII- Acromantinae.* - *Bollettino dei Musei di Zoologia ed Anatomia Comparata della Reale Università* **30** (702): 1-16.
- (1915b): *Mantidi esotici. Generi e specie nuove.* - *Bullettino della Società entomologica Italiana* **46**: 31-108.
- (1915c): *Mantidi esotici. Generi e specie nuove.* - *Bullettino della Società entomologica Italiana* **46**: 134-200.
- (1917): *Mantidi esotici. Generi e specie nuove.* - *Bullettino della Società entomologica Italiana* **48**: 43-108.
- (1919): *Saggio di una nuova classificazione dei Mantidi.* - *Bullettino della Società entomologica Italiana* **49**: 50-87.
- (1927): *Das Tierreich. Mantidae.* - Verlag Walter de Gruyter & Co., Berlin **50**: XL+707 pp., 25 fig.
- GMELIN, J. F. (1790): In: LINNÉ, C.: *Systema Naturae. Insecta. Coleoptera bis Hemiptera.* - Lipsiae, Beer, 13. ed., **1** (4): 1517-2224 (Mantodea: 2048-2055).
- GOEZE, J. A. E. (1778): *Entomologische Beiträge zu des Ritter LINNÉ zwölften Ausgabe des Natursystems, 2.* - Leipzig, Verlag Weidmanns Erben und Reich, 352 pp. (Mantodea: 16-37).
- HANDLIRSCH, A. (1930): 10. Ordnung der Pterygogenea: Mantodea oder Fangheuschrecken. - In: KÜKENTHAL, W. & T. KRUMBACH (HRSG.): *Handbuch der Zoologie, Progoneata - Chilopoda - Insecta. Insecta 1.* **4** (1). - Walter de Gruyter & Co., Berlin, 892 pp. (Mantodea: 803-819).
- HEBARD, M. (1920): *Studies in Malayan, Papuan and Australian Mantidae.* - *Proceedings of the Academy of Natural Sciences Philadelphia* **71**: 14-82.
- HERBST, I. F. W. (1786): In: FUESSLY, J. C.: *Fortsetzung des Verzeichnisses meiner Insecten-Sammlung.* - *Archiv der Insectengeschichte* (7-8): 183-196, pl. 50-51.
- ILLIGER, J. K. W. (1798): *Verzeichnis der Käfer Preussens und dem angehängten Versuch einer natürlichen Ordnung und Gattungsfolge der Insecten [Orthoptera & Phasmodea].* - Halle, Verlag J. J. Gebauer, : 41+510 pp. (Mantodea: 498-499).
- INGRISCH, S. (1987): *Zur Orthopterenfauna Nepals.* - *Deutsche Entomologische Zeitschrift (N. F.)* **34** (1-3): 113-139.
- JACOBSON, G. G. & W. T. BIANCHI (1905): *Die Orthopteren und Pseudoneuropteren des Russischen Reiches und der angrenzenden Länder, nach TUMPEL'S Werk.* - St. Petersburg, Dewriena, XII+952 pp. (Mantodea: 62-71, 138-161).
- JOSHI, S. L. & D. N. MANANDHAR (Eds.) (2001): *Reference insects of Nepal. A systematic catalogue of insects with pertinent data preserved in insect museum in Entomology Division of Nepal.* - Agricultural Research Council Khumaltar, Lalitpur, Kathmandu, Nepal, 122 pp (Mantodea: 37, pl. 11).
- KARNY, H. H. (1915): *H. Sauter's Formosa-Ausbeute. Orthoptera et Oothecaria.* - *Supplementa Entomologica* (4), Jagor-Stiftung, Deutsches Entomologisches Museum, Berlin-Dahlem : 56-108.
- KIRBY, W. F. (1899): *On a collection of Mantidae from the Transvaal & c. fromed by Mr. W. L. DISTANT.* - *Annals and Magazine of Natural History* **4**: 344-353.
- (1900): In: Andrews, C. W.: *A monograph of Christmas Island (Indian Ocean): physical Features and geology by CHARLES W. ANDREWS. With descriptions of the fauna and flora by numerous contributors.* - *Annals and Magazine of Natural History, London*, 337 pp. (Mantodea: 146-147).
- (1904a): *Notes on Mantidae in the collection of the British Museum, south Kensington, with descriptions of new species.* - *Annals and Magazine of Natural History, London* **13** (7): 81-88.
- (1904b): *A synonymic Catalogue of Orthoptera, Euplexoptera, Cursoria et Gressoria (Forficilidae, Hemimeridae, Blattidae, Mantidae and Phasmidae).* - *Print of the Trust, British Museum, London* **1**: I-X+501 pp. (Mantodea: 207-316).
- KOBLIK, Ye. A., M. Y. CHERNYAKHOVSKIY, O. V. VOLTZIT, A. B. VASSILIEVA & N. A. FORMOZOV (2000): *Some characteristics of the position of the primary faunistic border in Nepalese Himalayas.* - *Bulletin of Moscow Society of Naturalists (Biological Series)*, **105** (4): 3-21.
- KOÇAK, A. Ö. & M. KEMAL (2008): *Entomofauna of old world (EOW). Report on the "Entomofauna of Old World" Index of the recorded species of the Pterygot insects (Turkey excluded).* - *Centre for Entomological Studies Ankara, Cesa News* (29.XII.2008), (38): 1-57.
- KUMAR, R. & G. RAJKHOWA (2012): *Muga silkworm, Antheraea assamensis (Insecta: Lepidoptera: Saturniidae): rearing and insect predators.* - In: HARTMANN, M. & J. WEIPERT (Hrsg.) *Biodiversität und Naturausstattung im Himalaya IV.* - Verein der Freunde und Förderer des Naturkundemuseums Erfurt e.V., Erfurt: 187-189, pl. XV, fig. 34-37.
- LADLAW, W. B. R. (1931): *A new mantis from Behar, India. Orthoptera - Mantodea.* - *Entomologists Monthly Magazine* **67**: 88-90, pl. 4.
- LATREILLE, P. A. (1802): *Histoire naturelle, générale et particulière des Crustacés et des Insectes.* - Paris, Dufart, **3**: 12+467 pp. (Mantodea: 270-274).
- (1807): *Genera Crustaceorum et Insectorum secundum ordinem naturalem in familias disposita, iconibus exemplisque plurimis explicata.* - *Parisiis et Argentorat., Koenig*, **3**: 258 pp. (Mantodea: 79-95).
- LAURENT, P. (1913): *Nymphal emergence in Paratenodera sinensis.* - *Entomological News, Philadelphia* **24**: 431.
- LEONE, C. A. (1947a): *Systematic serology among certain insect species.* - *Annals Entomological Society of America, New York* **40**: 64-71.
- (1947b): *A serological study of some Orthoptera. Mantodea.* - *Annals Entomological Society of America* **40**: 417-433.
- LIANA, A. (2009): *Paula micra* gen. et sp. nov., A new praying mantis from Java (Mantodea: Mantidae: Amelinae). - *Annales Zoologici* **59** (3): 287-292, 7 fig.
- LICHTENSTEIN, A. A. H. (1802): *A Dissertation on two genera hitherto consounded under the name of mantis and phasmids.* - *Transactions of the Linnean Society London, v. Thomas Young, serie B*, **6**: 1-39.
- LINDT, J. (1953): *Contribution to the knowledge of the fauna of Mantodea of Tadzhikistan with the description of a new species.* - *Entomologičeskiy Review (Entomologičeskoe Obozrenie)* **33**: 273-280, 8 fig.

- (1963): Notes on Mantoidea of Badakshan (Tadzhikistan). - Trudy Instituta Zoologii i Parazitologii imeni Akademika Pavlovskogo. Akademija Nauk Tadzhikskoj SSR, Dushanbe **24**: 3-20, 10 fig.
- LINNÉ, C. (1758): Systema Naturae. - Holmiae, Laurentius Salvius, 10.ed., 1: 1-824 pp. (Mantodea: 424-433).
- (1763): Amoenitates Academicae; Physicae, Medicae, Botanicae. - Holmiae, Kiesewetter et Salvius **6**: 486 pp. (Mantodea: 396-399).
- (1764): Museum Ludovicae Ultricae Reginae. - Holmiae, Laurentius Salvius **1**: VIII+728 pp. (Mantodea: 108-117).
- (1767): Systema Naturae per regna tria naturae, secundum classes, ordines, genera, species cum characteribus, differentiis, synonymis, locis edition duodecima, reformata. - Holmiae, Laurentius Salvius 12.ed. 2: 688-691.
- LOMBARDO, F. (1992): Rhombodera fusca, nuova specie di Mantodeo della Thailandia (Insecta, Mantodea). - Animalia **19** (1-3): 97-100, 7 fig.
- (1993): Studies on the Mantodea of Nepal (Insecta). - Spixiana **16** (3): 193-206, 12 fig.
- (1995): Parahestiasula obscura, gen. nov., spec. nov. from Nepal (Insecta, Mantodea, Hymenopodidae). - Spixiana **18** (1): 11-14, 11 fig.
- MARSHALL, J. A. (1975): A Catalogue of the primary Types of Mantodea (Dictyoptera) in the British Museum (Natural History). - Print of the Trust, British Museum (Natural History) **31** (8): 307-329.
- MATERNA, S. & T. SCHULZE (2008): Ephestiasula pictipes (Wood-Mason, 1879), Boxermantis aus Indien. - Arthropoda **16** (1): 78, 1 fig.
- MATHUR, R. N. (1946): Notes on the biology of some Mantidae. - Indian Journal of Entomology **8** (1): 89-106.
- MATHUR, R. N., C. F. C. BEESON & S. N. CHATTERJEE (1934): On the Biology of the Mantidae (Orthopt.). With notes by C. F. C. BEESON & S. N. CHATTERJEE. - Indian Forest Records Entomology Series **20** (3): 1-25.
- MONDAL, S. K. & M. S. SHISHODIA (1997): In: KUMAR, A.: Fauna of Delhi. Blattariae and Mantodea. - Records of Zoological Survey of India, **6**: 197-201.
- MOTCHOULSKY, V. I. In: FISCHER V. WALDHEIM, G. (1846): Orthoptera Imperii Russici. - Nouveaux Mémoires de la Société Impériale Naturalistes de Moscou **8**: 151 (Mantodea: 101, pl. 2, fig. 3) S.
- MUKHERJEE, T. K. & A. K. HAZRA (1983): On a small collection of Mantidae (Dictyoptera) from Maharashtra, India, with the description of a new species. - Records of Zoological Survey of India **80** (3-4): 459-465.
- MUKHERJEE, T. K. & A. K. HAZRA (1993): Fauna of West Bengal (Insecta: Mantodea). - Records of Zoological Survey of India, Calcutta **3** (4): 475-510, 13 fig.
- MUKHERJEE, T. K., A. K. HAZRA & J. BALDERSON (1992): Type specimens of Mantodea in the zoological survey of India collections, Calcutta, India. - Raffles Bulletin of Zoology **40** (1): 65-68.
- MUKHERJEE, T. K. & M. S. SHISHODIA (2000): Mantodea: Checklists, Lake, Semiaquatic habitat, Wetland, Himachal Pradesh, Renuka Wetland. Fauna of Renuka Wetland (Himachal Pradesh). - Records of Zoological Survey of India (ser. 2): 63-66.
- MUKHERJEE, T. K., B. C. DAS & A. K. HAZRA (2005): Types of Mantodea (Insecta: Mantodea) in the collection of Central Entomological Laboratory of survey of India, Kolkata, India. - Records of Zoological Survey of India **104** (3-4): 143-149.
- MUKHERJEE, T. K., R. EHRMANN & P. CHATTERJEE (2014): Checklist of Mantodea (Insecta) from India. - Priamus (Serial Publication of the Centre for Entomological Studies Ankara), (28.VII.2014), (suppl.) (30): 1-61.
- MUKHERJEE, T. K., A. K. HAZRA & J. BALDERSON (1992): Type specimens of Mantodea in the zoological survey of India collections, Calcutta, India. - Raffles Bulletin of Zoology **40** (1): 65-68.
- MUKHERJEE, T. K., A. K. HAZRA & A. K. GHOSH (1995): The mantid fauna of India (Insecta: Mantodea). - Oriental Insects **29**: 185-358, 134 fig.
- MUKHERJEE, T. K., M. B. D. STIEWE & N. GHORAI (2010): A new species of praying mantis *Ephestiasula woodmasoni* n. sp. from Gujarat, India with a note on the location of types of some indian species (Mantodea: Hymenopodidae). - Genus **21** (2): 169-173, 8 fig.
- NADKERNY, N. T. A. (1965): A note on the Mantids and Tettigonids in the collection of the Bombay Natural History Society. - Journal of Bombay Natural History Society **62** (1): 76-83.
- NAEEM, M. & M. YOUSUF (1996): Mantodea (Dictyoptera) from Punjab, Pakistan. - Entomologists Monthly Magazine **132** (11): 281-284.
- (2000): Biosystematics of Mantidae (Mantodea: Dictyoptera) from Punjab, Pakistan. - Pakistan Entomologists **22** (1-2): 111-115.
- NAVÁS, R. P. L. (1904): Notas Zoológicas. III. Algunos insectos de Kurseong en la cordillera del Himalaya. - Boletín de la Sociedad Aragonesa de Ciencias Naturales **3** (5-6): 128-134.
- OLIVIER, A. G. (1792): Histoire Naturelle. Insectes (Mantodea). Encyclopédie méthodique, Dictionnaire des Insectes. - Paris, Pankouke, **7**: 827 pp. (Mantodea: 616-642).
- OTTE, D. & L. SPEARMAN (2005): Mantida - species file. Catalog of the mantids of the world. - Louisville-USA, Insect Diversity Association Publication, (1): 489 pp.
- PADEWIETH, M. (1900): Orthoptera genuina des kroat. Littorale und der Umgebung Fiumes. - Glasnik Hrvatskoga naravoslovnoga Druztva [Societas historico-naturalis Croatica] **11**: 8-33.
- PALLAS, P. S. (1773): Reise durch verschiedene Provinzen des Russischen Reiches in den Jahren 1768-1774. - Akademische Buchhandlung, St. Petersburg **2** (2): 728 pp..
- PAULIAN, R. (1958): Mantides malgaches nouveaux ou méconnus. - Naturaliste Malgache **10** (1-2): 31-36, 4 fig.
- RAMBUR, J. P. (1838): Faune entomologique de l'Andalousie. - Arthus Bertrand, Paris [1837-1842], **2**: 336 pp. (Mantodea: 15-23).
- RAMSAY, G. W. (1990): Fauna of New Zealand. Mantodea (Insecta) with a review of aspects of functional morphology and biology. - DSIR Publishing, Wellington **19**: 1-96 (Mantodea: 41).
- REHN, J. A. G. (1903): Studies in old world Mantidae (Orthoptera). - Proceedings of the Academy of Natural Sciences of Philadelphia **55**: 701-718.
- (1909): A contribution to the knowledge of the Orthoptera of Sumatra. - Bulletin of the American Museum of Natural History **26**: 177-211 (Mantodea: 180-186).
- (1910): Dermaptera and Orthoptera. - In John Bernhard Smith, Annual report of the New Jersey Museum. Including a report of the insects of New Jersey [1909], 851 pp. (Mantodea: 175-193).
- (1911): Genera Insectorum. Orthoptera, Fam. Mantidae, Subfamilie: Vatiniae. - Tervueren, Wytzman, supply. 119, 28 pp.
- (1912): On some African Mantidae and Phasmidae in the Collection of the Deutsches Entomologisches Museum. - Archiv für Naturgeschichte **78** (6): 106-126.
- (1927): Contributions to our knowledge of the Dermaptera and Orthoptera of the Transvaal and Natal (Part 2. Mantidae). - Annals of the Transvaal Museum Pretoria **12** (1): 1-54.
- RISSE, J. A. (1826): Histoire naturelle des principales productions de l'Europe méridionale et principalement de celles des environs de Nice et des Alpes maritimes. - Verlag Levrault, Paris **5**: 187-257 (Mantodea: 210-213).
- ROONWAL, M. L. & G. D. BHASIN (1951): A systematic catalogue of the main identified entomological collection at the Forest Research Institute, Dehra Dun. - Indian Forester **77** (5): 313-318.
- ROY, R. (1966): Contribution à la connaissance des *Amorphoscelis* de la région orientale (Mantodea, Amorphoscelidae). I.- Les espèces indo-cingalaises. - Bulletin de la Société entomologique de France, **70** (9-10): 267-273, 4 fig.
- (1967): Contribution à la connaissance des genres Mantis Linné et Paramantis, nov. (Mantidae). - Bulletin de l'Institut Fondamental d'Afrique Noire, (ser. A) **29** (1): 126-149.
- (1968): Entomologie Systématique. - Compléments à la connaissance du genre Mantis: l'identité de *M. nobilis* et *M. octospilota* (Dict.). - Bulletin de la Société entomologique de France **73** (7-8): 174-176.
- (1973): Premier inventaire des Mantes du Gabon. - Biologia Gabonica **8** (3-4): 235-290, 12 fig..
- (1999): Une nouvelle espèce africaine du genre Mantis Linné (Dictyoptera, Mantodea, Mantidae). - Revue française d'Entomologie (nouvelle série) **21** (4): 163-166.
- (2004): Réarrangements critiques dans la famille des Empusidae et relations phylogénétiques (Dictyoptera, Mantodea). - Revue française d'Entomologie (nouvelle série) **26** (1): 1-18, 24 fig.
- (2010): Les Amorphoscelinae indo-malais (Mantodea, Amorphoscelidae). - Revue française d'Entomologie (nouvelle série) **32** (1-2): 65-92.
- (2014): A historical review of nomenclature and high-level classification of praying mantises (Mantodea), including a provisional checklist of the names associated to suprageneric ranks. - Zootaxa **3797** (1): 9-28, appendix.
- SAUSSURE, H. de (1869): Essai d'un système des Mantides. - Mitteilungen der Schweizerischen Entomologischen Gesellschaft **3** (2): 49-73.

- (1870): Additions au système des Mantides. - Mitteilungen der Schweizerischen Entomologischen Gesellschaft **3** (5): 221-244.
- (1871a): Mélanges Orthoptérologiques, IV. Mantides. - Mémoires de la Société de Physique et d'Histoire Naturelle de Genève, 3.ed., **21** (1): 1-214, pl. 4-6.
- (1871b): Mélanges Orthoptérologiques, Mantides. - Mémoires de la Société de Physique et d'Histoire Naturelle de Genève, 3.ed., **21** (2): 239-337.
- (1871c): Mélanges Orthoptérologiques, IV. Mantides. - H. Georg, Genève & Bâle, [1863-1871], suppl., 3.ed., **1** (2): 149-362.
- (1871d): Mélanges Orthoptérologiques, Mantides. - H. Georg, Genève & Bâle, [1863-1871], suppl., 3.ed., **21**: 363-462.
- (1871e): Mémoires pour servir à l'histoire naturelle du Mexique, des Antilles et des États-Unis, quatrième mémoire. IV. Synopsis des Mantides américains. - Genève & Bâle, H. Georg, **1** (4): 1-186.
- (1872): Mélanges Orthoptérologiques IV - Mantides et Blattides. - Mémoires de la Société de Physique et d'Histoire naturelle de Genève, 4.ed., **23** (2): 1-90, 155-162, pl. 8-9.
- (1874): Orthoptera, Mantodea. - In: Fedcenko, A. P.: Fedcenkos Reise nach Turkestan (Im Gebiet von Kokan). - Moskow, V. N. Ulanjanin, **11** (4): 1-52.
- (1898): Analecta entomologica. 1. Orthopterologica Famille Mantides. - Genève, Revue Suisse de Zoologie, **5**: 183-248, appendix: 787-809.
- SAUSSURE, H. de & L. ZEHNTNER (1895): Histoire naturelle des Orthoptères (Blattides et Mantides). - In: Grandidier, A. Histoire physique, naturelle et politique de Madagascar. - Paris, L'Imprimerie Nationale, **23**: XVI + 244 pp. (Mantodea: 147-244).
- SCOPOLI, J. A. (1763): Entomologia Carniolica exhibens insecta Carnioliae indigena et distributa in ordines, genera, species, varietates, methodo Linneana. - Vindobonae, Trattner, 36+420 pp. (Mantodea: 105, fig. 315).
- SEBA, A. (1765): Description exacte des principales curiositez naturelles du magnifique Cabinet d'Albert Seba. - Amsterdam, Thesaurus, **4**: 42+226 pp., 108 pls..
- SHIRAKI, T. (1911): Phasmiden und Mantiden Japans (Phasmodea and Mantodea). - Annotationes Zoologicae Japonenses **7** (5): 291-331.
- (1932): Orthoptera of the Japanese Empire, Part III. Fam. Mantidae. - Transactions of the Natural History Society of Formosa **22** (120): 113-123.
- SJÖSTEDT, Y. (1930): Orthopterentypen im Naturhistorischen Reichsmuseum zu Stockholm. - Arkiv för Zoologi **21A** (32): 1-43.
- SOOMRO, N. M., M. H. SOOMRO & M. S. WAGAN (2001): Description of three new species and sub species of praying mantids (Mantodea) from Sindh. - Sindh University Research Journal (Scie. serie) **33** (1): 23-26.
- (2002): Key to the identification of praying mantids (Mantodea) occurring in Sindh, Pakistan. - Sindh University Research Journal (Science serie) **34** (1): 57-62.
- STÅL, C. (1871): Orthoptera quaedam africana descripsit C. STÅL. - Öfversigt af kungliga Vetenskaps-Akademiens Förhandlingar **28** (3): 375-401.
- (1877): Systema Mantodeorum. Essai d'une systematisation nouvelle des Mantodées. - Bihang till kungliga Svenska Vetenskaps Akademiens Handlingar, Stockholm **4** (10): 1-91.
- STOLL, C. (1787): Représentation exactement colorée d'après Nature des Spectres ou Phasmes, des Mantes, des Sauterelles, des Grillons, des Criquets et des Blattes, qui se trouvent dans les quatre parties du monde, l'Europe, l'Asie, l'Afrique et l'Amérique. - Sepp, Amsterdam, 23 pl. (see text at Stoll 1813).
- (1813): Représentation exactement colorée d'après Nature des Spectres ou Phasmes, des Mantes, des Sauterelles, des Grillons, des Criquets et des Blattes, qui se trouvent dans les quatre parties du monde, l'Europe, l'Asie, l'Afrique et l'Amérique. - Sepp, Amsterdam, [Houttuyn], 79 pp., 25 pl.
- SURESHAN, P. M. (2010): A preliminary study on the mantid fauna (Insecta: Mantodea) of Orissa, India. - Occasional Paper, Records of the Zoological Survey of India [2009] (305): 1-56 pp, 36 fig., 6 pls..
- SURESHAN, P. M., H. V. GHATE & C. RADHAKRISHNAN (2004): Fauna of Pench National Park Maharashtra. Insecta: Mantodea. - Records Zoological Survey of India [Conservation Area, Ser. 20] **3**: 207-232.
- (2006): Fauna of Tadoba Andhari Tiger Reserve Maharashtra. Insecta Mantodea. - Records Zoological Survey of India [Conservation Area, Ser. 25] **1**: 227-232.
- THUNBERG, C. P. (1784): Dissertatio entomologica novae insectorum specis sistens, III. Mantodea. - Edmann, Jahan, Novae Insectorum Species, Uppsala **3**: 53-68.
- (1815): Hemipterorum maxillosorum genera illustrata, plurimisque novis speciebus dilata ac descripta. Orthoptera, Mantodea. - Mémoires de Impériale L'Académie des Sciences de St. Petersburg **5**: 211-301.
- TINDALE, N. B. (1924): Review of Australian Mantidae. Teil II. - Records of South Australian Museum **2** (4): 547-552.
- TINKHAM, E. R. (1937a): Studies in Chinese Mantidae (Orthoptera). - Lingnan Sciences Journal **16** (3): 481-499.
- (1937b): Studies in Chinese Mantidae (Orthoptera). - Lingnan Sciences Journal **16** (4): 551-572.
- UVAROV, B. P. (1931): Notes on the genus *Iris*, Saussure (Orthoptera, Mantidae) (31.). - Annals and Magazine of Natural History **8** (10): 234-238, pl. 6.
- (1940): Twenty-eight new generic names in Orthoptera (13.). - Annals and Magazine of Natural History serie **11**, (5): 173-176.
- VYJAYANDI, M. C. & T. C. NARENDHAN (2003): A new species and a key to Indian species of *Hierodula* Burmeister (Mantodea: Mantidae). - Entomon Journal (28405), **28** (4): 315-320, 6 fig.
- VYJAYANDI, M. C. (2007): Mantid fauna of Kerala, India. - Records of the Zoological Survey of India, Occasional Paper **267**: 169 pp., 24 pl., 233 fig.
- WANG, T. (1993): Synopsis on the classification of Mantodea from China. - Shanghai Scientific and Technological, Literature Publishing House, Shanghai, 176 pp., 187 fig.
- WANG, T. & D. DONG (1993): Three new species of mantids from Yunnan Province, China (Mantodea). - Zoological Research **14** (3): 203-207, 5 fig.
- WERNER, F. (1908): Die Mantodeen Abessyniens. Nach dem Material des St. Petersburger akademischen Museums. - Annuaire Museum der Zoologie der Academie St. Petersburg **13**: 108-128.
- (1909): Bemerkungen über die geographische Verbreitung der Mantodeen (Fangheuschrecken). - Verhandlungen der Zoologisch-Botanischen Gesellschaft in Wien **59**: 70-81.
- (1916): Zur Kenntnis afrikanischer und indischer Mantodeen. - Verhandlungen der Zoologisch-Botanischen Gesellschaft in Wien **66** (3-5): 254-296, 11 fig.
- (1922a): Zur Kenntnis der Mantodeenfauna der niederländischen Kolonien. - Zoologische Mededelingen **7** (1-2): 115-126.
- (1922b): Philippine mantids, or praying insects. - Philippine Journal of Science **21** (2): 147-159.
- (1926): Zur Kenntnis der Mantodeen der Philippinen. - Konowia **5** (3): 227-232.
- (1928): Zur Kenntnis der Mantodeenfauna des Hinterlandes von Kamerun und des Sepikgebietes von Neuguinea - Nebst Beschreibung einiger interessanter Arten aus anderen Ländern (I. Kamerun. II. Neuguinea. III. Mantodeen verschiedener Herkunft). - Mitteilungen aus dem Zoologischen Museum in Berlin **14** (1): 13-41.
- (1930a): Über asiatische Mantidae aus dem naturhistorischen Reichsmuseum in Stockholm. - Arkiv för Zoologi (K. Svenska vetenskaps-akademien Stockholm) **21A** (34): 1-10.
- (1930b): Indian mantids or praying insects. - Proceedings of the Zoological Society of London **32**: 689-690, 1 pl.
- (1931): Further notes on Indian Mantids or praying insects. - Proceedings of the Zoological Society of London **4**: 1329-1334, 1 pl.
- (1933): Third contribution to the knowledge of Indian mantids, or praying insects. - Proceedings of the Zoological Society of London **2**: 897-901.
- (1935): Further communication on Indian mantids or praying insects. - Proceedings of the Zoological Society of London **3**: 495-498.
- WESTWOOD, J. O. (1837): Illustrations of exotic Entomology. - Bohn, London **1**: 121-123, pl. 1.
- (1889): Revisio Insectorum familiae Mantidarum, speciebus novis aut minus cognitis descriptis et delineatis. - London, Gurney and Jackson, III+55 pp., 14 pl.
- (1876): A remarkable species of Mantidae. - Proceedings of the Asiatic Society of Bengal: 175-176.
- WOOD-MASON, J. (1884): Mantodea - Hymenopodidae. Genus *Hestia*. - Journal of Asiatic Society of Bengal **53** (2): pl. 13, figs 11.
- (1877): Descriptions of two new genera and species of Indian Mantidae (17.). - Annals and Magazine of Natural History **4** (19): 219-222.

- (1878a): Notes on new and little-known Mantidae (14.). - *Annals and Magazine of Natural History* **1** (5): 143-147.
 - (1878b): On new and little-known Mantidae (3.). - *Proceedings of the Zoological Society of London* **38**: 580-587, 2 pl.
 - (1879): On the systematic position of some little known Asiatic Mantodea, with description of two new species belonging to the Hestias. - *Proceedings of the Asiatic Society of Bengal, Calcutta* : 257-259.
 - (1882): On new and little known Mantodea (5.). - *Journal of Asiatic Society of Bengal, Calcutta* **51** (2): 21-36.
 - (1884): Mantodea - Hymenopodidae. - *Journal of Asiatic Society of Bengal* **53**: pl. 13.
 - (1889a): The ethiopian and oriental representatives of the Mantodean Subfamily Vatidae. - *Journal of Asiatic Society of Bengal* **58** (3): 306-326.
 - (1889b): A Catalogue of the Mantodea, with descriptions of new genera and species, and an enumeration of the specimens, in the collection of the Indian Museum, Calcutta. - *Print of the Museum Calcutta* (1): 1-48.
 - (1891): A Catalogue of the Mantodea, with descriptions of new genera and species, and an enumeration of the specimens, in the collection of the Indian Museum, Calcutta. - *Print of the Museum Calcutta* (2): 49-66, pl. 1-2.
- ZHU XIAO-YU., CHAO, WU & QIN, YUAN (2012): *Mantodea in China*. - Editor: ZHU Xiao Yu, WU Chao & YUAN Qin Zhu, Xiyuan Publishing House, Beijing, 1.ed., 331 pp.

Authors' addresses:

Reinhard Ehrmann
Staatliches Museum für Naturkunde Karlsruhe
Abt. Entomologie
Erbprinzenstraße 13
D-76133 Karlsruhe
Germany
Ehrmann.Mantodea@t-online.de

Dr. Matthias Borer
Natural History Museum
Curator Dpt. Entomology
Augustinergasse 2
CH 4001 Basel
Switzerland
Matthias.Borer@bs.ch